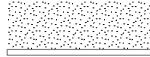


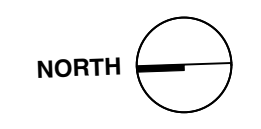


PLANT SCHEDULE					
SYMBOL	BOTANICAL NAME	COMMON NAME	SIZE	QTY	NOTES
TREES					
T1	PRUNUS SERULLA	TIBETAN CHERRY	3" CAL	1	DECIDUOUS, NARROW SERRATED FOLIAGE, RED MAHOGANY PEELING BARK
T2	POPULUS TREMULA 'ERECTA'	COLUMNAR SWEDISH ASPEN	2" CAL	3	DECIDUOUS, ROUNDED FOLIAGE THAT FLUTTER, VERY NARROW FORMED TREE
T3	STEWARTIA PSEUDOCAMELIA	JAPANESE STEWARTIA	2.5" CAL	2	DECIDUOUS, GREAT FALL COLOUR, MOTTLED SILVERY BARK, WHITE BLOOMS
T4	PINUS PARVIFLORA 'GLAUCA'	JAPANESE WHITE PINE	#5 POT	4	EVERGREEN, BLuish-GREEN TO GREY NEEDLES, DARK BRONZE CONES
SHRUBS					
S1	CEANOTHUS X 'DARK STAR'	DARK STAR CALIFORNIA LILAC	#5 POT	2	EVERGREEN, DARK GREEN SMALL FOLIAGE, DARK BLUE FRAGRANT BLOOMS
S2	EDGEWORTHIA CHRYSANTHA	PAPER BUSH	#3 POT	3	DECIDUOUS, BLUE-GREEN FOLIAGE, FRAGRANT YELLOW BLOOMS LATE WINTER
S3	OSMANTHUS DELAVYII	OSMANTHUS	#3 POT	27	EVERGREEN, SMALL SERATED D.GREEN FOLIAGE, FRAGRANT WHITE BLOOMS
PERENNIALS					
P1	PANICUM VIRGATUM 'NORTHWIND'	NORTHWIND SWITCH GRASS	#2 POT	30	HERBACEOUS, UPRIGHT NARROW FORM, MID GREEN BLADES, GREAT FALL COLOR
P2	EUPHORBIA CHARACHIAS WULFENII	SPURGE	#2 POT	5	EVERGREEN, BLUE/GREEN FOLIAGE, CHARTREUSE BLOOMS
P3	OPHIPOGON JABURAN 'CRYSTAL'	CRYSTAL FALLS MONDO GRASS	#1 POT	58	EVERGREEN, DEEP GREEN GLOSSY BLADES, WHITE BLOOMS IN SUMMER
P4	STACHYS BYZANTIA 'BIG EARS'	BIG EARS LAMB'S EARS	#1 POT	45	
P5	BERGENNIA 'BRESSINGHAM RUBY	BRESSINGHAM RUBY BERGENIA	#1 POT	15	EVERGREEN, DARK GREEN FOLIAGE TURNS RED IN WINTER, DARK PINK BLOOMS
P6	POLYSTICHUM MUNITUM	SWORD FERN	#2 POT	7	EVERGREEN, DARK GREEN FRONDS
P7	OPHIPOGON NIGRESCENS	BLACK MONDO GRASS	#1 POT	38	EVERGREEN, BLACK GRASSY FOLIAGE, PURPLE BLOOMS IN FALL
GROUND COVERS / TRAILERS					
GC1	SEDUM 'CORAL CARPET'	CORAL CARPET SEDUM	4" POT	25	EVERGREEN, SUCCULENT GREEN/CORAL FOLIAGE, YELLOW BLOOMS
GC2	SEDUM 'ANGELINA'	SEDUM 'ANGELINA'	4" POT	26	EVERGREEN, SUCCULENT BRIGHT YELLOW/GREEN FOLIAGE TURNING ORANGE
BULBS					
B1	ALLIUM 'PURPLE SENSATION'	ALLIUM 'PURPLE SENSATION'	BULB	150	HERBACEOUS, BRIGHT PURPLE BALLS BLOOMS - PLANT AMONGST SPIREAS
B2	NARISSUS POETICUS	NARISSUS POETICUS	BULB	50	HERBACEOUS, WHITE SMALL FRAGRANT BLOOMS, PLANT AMONGST FERNS

 DRIP EDGE: CRUSHED STONE W/ PRESSURE TREATED WOOD EDGE
 PERVIOUS PAVING
 PER VANCOUVER INTEGRATED RAINWATER MANAGEMENT PLAN
 POURED CONCRETE



3	190530	REVISED DE SUBMISSION #2
2	180611	REVISED DE SUBMISSION #1
1	180419	DE SUBMISSION
		NO. DATE REVISION

COPYRIGHT RESERVED:
 All drawings and related documents are the copyright property of the Architect and must be returned upon request. Reproduction of the contract documents in whole or part is forbidden without the Architect's written permission.

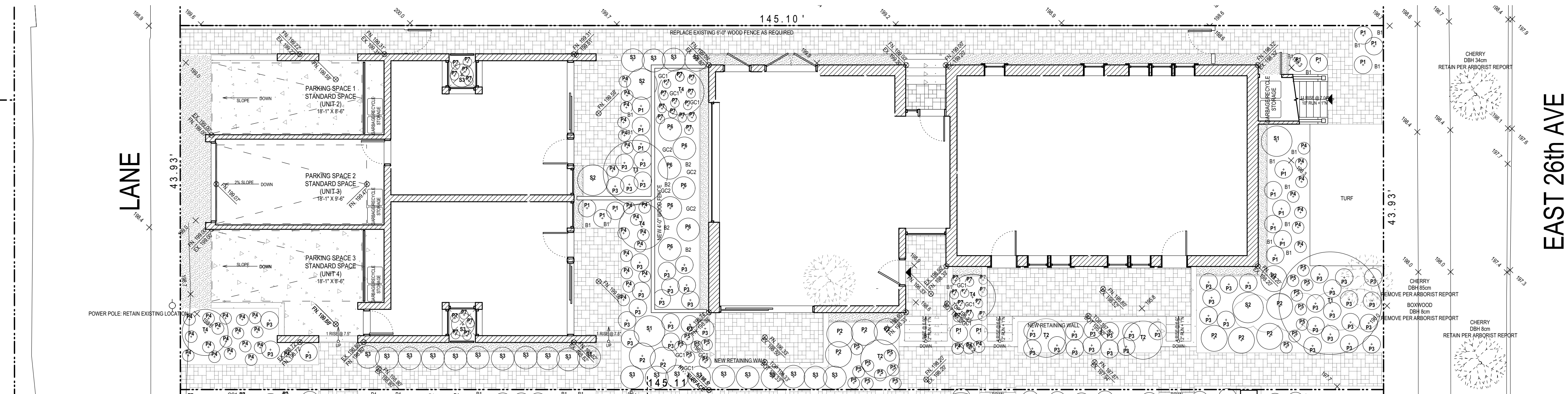
BIRMINGHAM & WOOD
 ARCHITECTS • PLANNERS

231 Carrall Street
 Vancouver, B.C. V6B 2I2
 Ph: 604-687-1594 Fax: 604-687-1310

PROJECT
New Construction
 735 East 26th Avenue
 Vancouver, BC

DRAWING TITLE
 LANDSCAPE PLAN

SCALE	DATE	SHEET NO.
1/8" = 1'	May 30, 2019	A1.2
DRAWN	CHECKED	
DH	SM	



1 LANDSCAPE PLAN
 1/8" = 1'-0"