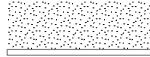


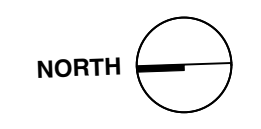


PLANT SCHEDULE					
SYMBOL	BOTANICAL NAME	COMMON NAME	SIZE	QTY	NOTES
<b>TREES</b>					
T1	PRUNUS SERULLA	TIBETAN CHERRY	3" CAL	1	DECIDUOUS, NARROW SERRATED FOLIAGE, RED MAHOGANY PEELING BARK
T2	POPULUS TREMULA 'ERECTA'	COLUMNAR SWEDISH ASPEN	2" CAL	4	DECIDUOUS, ROUNDED FOLIAGE THAT FLUTTER, VERY NARROW FORMED TREE
T3	STEWARTIA PSEUDOCAMELIA	JAPANESE STEWARTIA	2.5" CAL	1	DECIDUOUS, GREAT FALL COLOUR, MOTTLED SILVERY BARK, WHITE BLOOMS
T4	PINUS PARVIFLORA 'GLAUCA'	JAPANESE WHITE PINE	#5 POT	4	EVERGREEN, BLuish-GREEN TO GREY NEEDLES, DARK BRONZE CONES
<b>SHRUBS</b>					
S1	CEANOTHUS X 'DARK STAR'	DARK STAR CALIFORNIA LILAC	#5 POT	4	EVERGREEN, DARK GREEN SMALL FOLIAGE, DARK BLUE FRAGRANT BLOOMS
S2	EDGEWORTHIA CHRYSANTHA	PAPER BUSH	#3 POT	1	DECIDUOUS, BLUE-GREEN FOLIAGE, FRAGRANT YELLOW BLOOMS LATE WINTER
S3	OSMANTHUS DELAVII	OSMANTHUS	#3 POT	19	EVERGREEN, SMALL SERATED D.GREEN FOLIAGE, FRAGRANT WHITE BLOOMS
<b>PERENNIALS</b>					
P1	PANICUM VIRGATUM 'NORTHWIND'	NORTHWIND SWITCH GRASS	#2 POT	33	HERBACEOUS, UPRIGHT NARROW FORM, MID GREEN BLADES, GREAT FALL COLOR
P2	EUPHORBIA CHARACHIAS WULFENII	SPURGE	#2 POT	8	EVERGREEN, BLUE/GREEN FOLIAGE, CHARTREUSE BLOOMS
P3	OPHIPOGON JABURAN 'CRYSTAL'	CRYSTAL FALLS MONDO GRASS	#1 POT	62	EVERGREEN, DEEP GREEN GLOSSY BLADES, WHITE BLOOMS IN SUMMER
P4	STACHYS BYZANTIA 'BIG EARS'	BIG EARS LAMB'S EARS	#1 POT	15	
P5	BERGENIA 'BRESSINGHAM RUBY'	BRESSINGHAM RUBY BERGENIA	#1 POT	39	EVERGREEN, DARK GREEN FOLIAGE TURNS RED IN WINTER, DARK PINK BLOOMS
P6	POLYSTICHUM MUNITUM	SWORD FERN	#2 POT	7	EVERGREEN, DARK GREEN FRONDS
P7	OPHIPOGON NIGRESCENS	BLACK MONDO GRASS	#1 POT	89	EVERGREEN, BLACK GRASSY FOLIAGE, PURPLE BLOOMS IN FALL
<b>GROUND COVERS / TRAILERS</b>					
GC1	SEDUM 'CORAL CARPET'	CORAL CARPET SEDUM	4" POT	50	EVERGREEN, SUCCULENT GREEN/CORAL FOLIAGE, YELLOW BLOOMS
GC2	SEDUM 'ANGELINA'	SEDUM 'ANGELINA'	4" POT	26	EVERGREEN, SUCCULENT BRIGHT YELLOW/GREEN FOLIAGE TURNING ORANGE
<b>BULBS</b>					
B1	ALLIUM 'PURPLE SENSATION'	ALLIUM 'PURPLE SENSATION'	BULB	150	HERBACEOUS, BRIGHT PURPLE BALLS BLOOMS - PLANT AMONGST SPIREAS
B2	NARISSUS POETICUS	NARISSUS POETICUS	BULB	50	HERBACEOUS, WHITE SMALL FRAGRANT BLOOMS, PLANT AMONGST FERNS

 DRIP EDGE: CRUSHED STONE W/ PRESSURE TREATED WOOD EDGE  
 PERVIOUS PAVING  
 PER VANCOUVER INTEGRATED RAINWATER MANAGEMENT PLAN  
 POURED CONCRETE



NO.	DATE	REVISION
3	190530	REVISED DE SUBMISSION #2
2	180611	REVISED DE SUBMISSION #1
1	180419	DE SUBMISSION

COPYRIGHT RESERVED:  
 All drawings and related documents are the copyright property of the Architect and must be returned upon request. Reproduction of the contract documents in whole or part is forbidden without the Architect's written permission.

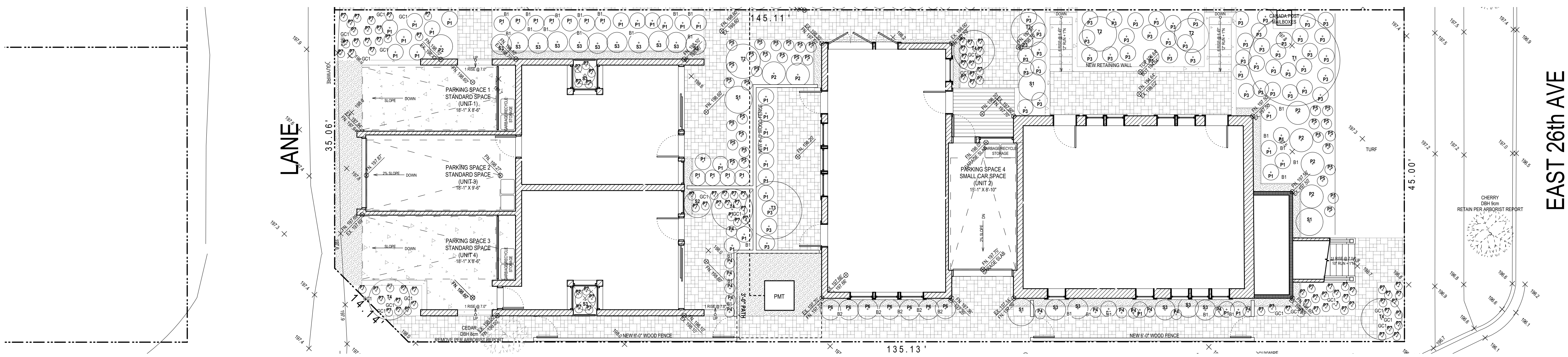
**BIRMINGHAM & WOOD**  
 ARCHITECTS • PLANNERS

231 Carrall Street  
 Vancouver, B.C. V6B 2I2  
 Ph: 604-687-1594 Fax: 604-687-1310

PROJECT  
**New Construction**  
 727 East 26th Avenue  
 Vancouver, BC

DRAWING TITLE  
 LANDSCAPE PLAN

SCALE	DATE	SHEET NO.
1/8" = 1'	May 30, 2019	<b>A1.2</b>
DRAWN DH	CHECKED SM	



1 LANDSCAPE PLAN  
 1/8" = 1'-0"