

© Copyright Reserved. This drawing and design are, and at all times remain, the property of Soren Rasmussen Architects Inc., and can be reproduced only with written consent. This drawing must not be scaled. Contractors shall verify all dimensions prior to commencement of work, and any omissions or discrepancies shall be reported to the Architect

REVISION	DATE	ISSUE FOR
JUN 01, 2018		SOLAR PANELS PLACED AT ROOF
JUN 18, 2018		ALUM CANOPY PLACED AT WINDOWS
JUL 11, 2018		REVIEW
JUL 18, 2018		MODIFIED PROJECT TITLE

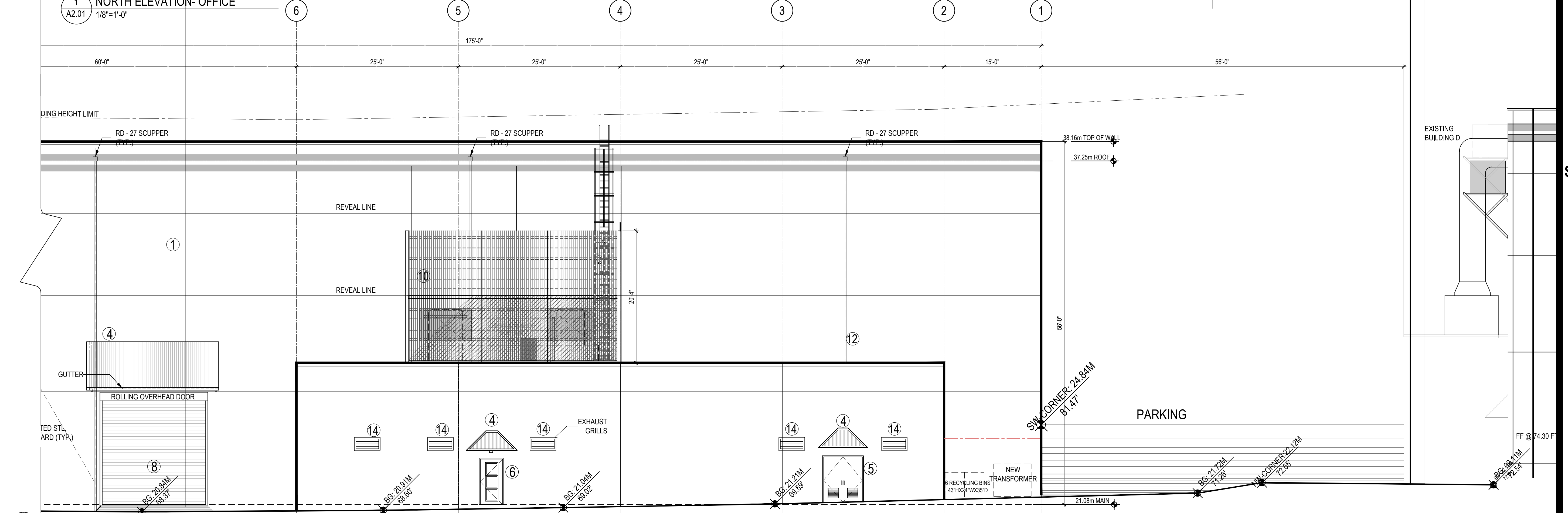
EXTERIOR FINISHES

- ① TILT-UP CONCRETE WALL WITH REVEAL LINES, PAINTED
- ② CLEAR ANODIZED ALUMINUM WINDOW FRAMES
- ③ PAINTED ALUMINUM SUN SHADE
- ④ PAINTED STANDING SEAM STEEL CANOPY
- ⑤ PAINTED STEEL DOOR
- ⑥ ALUMINUM FRAMED GLAZED DOOR
- ⑦ PAINTED STEEL BOLLARD
- ⑧ OVERHEAD DOOR, PAINTED STEEL
- ⑨ VENTILATION SCREEN, PAINTED STEEL MESH
- ⑩ MECHANICAL SCREEN PAINTED STEEL, 50% OPEN LOWER SECTION
- ⑪ PAINTED SIGNAGE
- ⑫ RAIN WATER LEADER, PAINTED STEEL, WITH PROTECTIVE CAGE AT GRADE LEVEL
- ⑬ PAINTED STEEL GUARD RAIL
- ⑭ PAINTED EXHAUST GRILL



1 NORTH ELEVATION-OFFICE

A2.01 1/8"=1'-0"



1 NORTH ELEVATION-STUDIO

A2.01 1/8"=1'-0"

TYPE OF WORK
VANCOUVER FILM STUDIO-E & OFFICE-F
 2626 SKEENA ST &
 3596 CORNETT ROAD
 CLIENT'S DETAILS



120, 1412-7TH AVENUE, VANCOUVER
 BRITISH COLUMBIA, CANADA V6H4H2
 TEL. 604-681-4292 FAX: 604-681-4257
 EMAIL ADDRESS: SRARCH@SRARCH.NET

NORTH ELEVATION

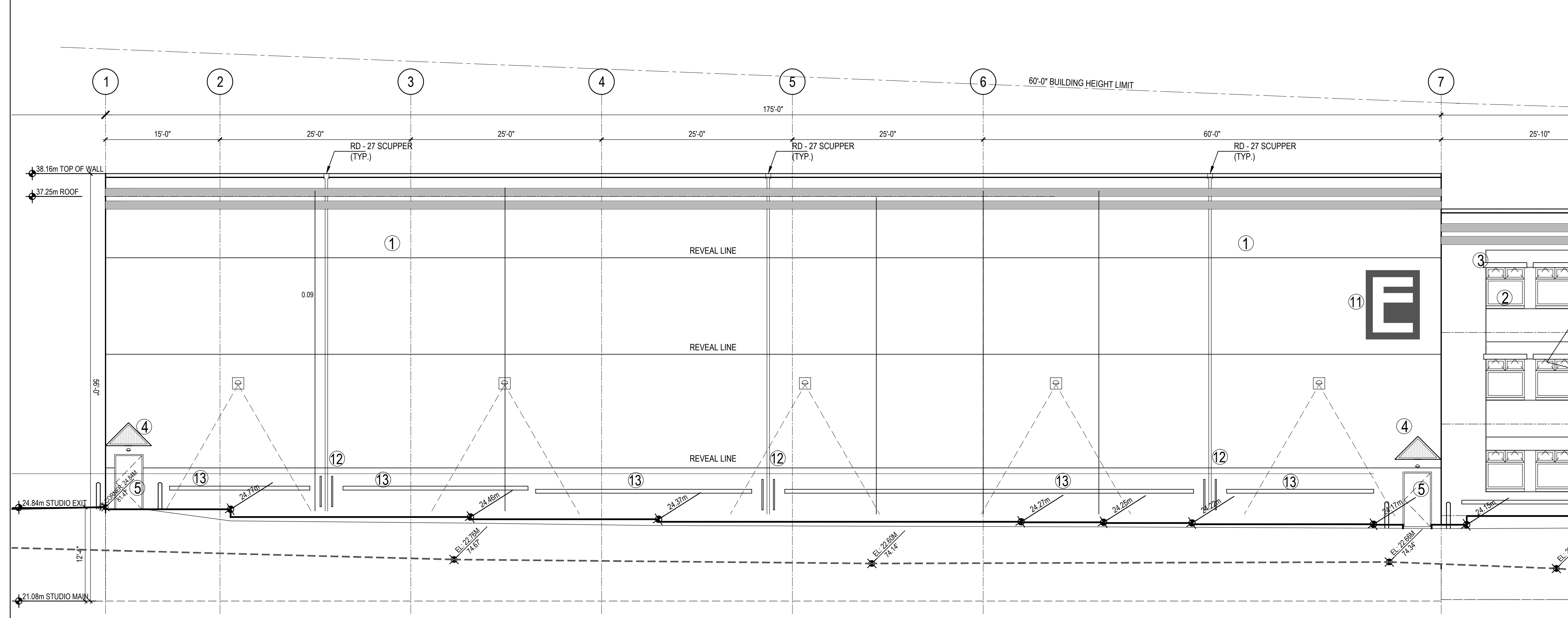
PROJECT No.:	7057
SCALE @ 22x34:	AS NOTED
DRAWN BY:	AK
DATE:	FEB 19, 2018
REVISION No.:	0

A2.01

FILE LOCATION:

© Copyright Reserved. This drawing and design are, and at all times remain, the property of Soren Rasmussen Architects Inc., and can be reproduced only with written consent. This drawing must not be scaled. Contractors shall verify all dimensions prior to commencement of work, and any omissions or discrepancies shall be reported to the Architect

REVISION	DATE	ISSUE FOR
JUN 01 2018		SOLAR PANELS PLACED AT ROOF
JUN 18 2018		ALUM CANOPY PLACED AT WINDOWS
JUL 11 2018		REVIEW
JUL 18 2018		MODIFIED PROJECT TITLE



EXTERIOR FINISHES

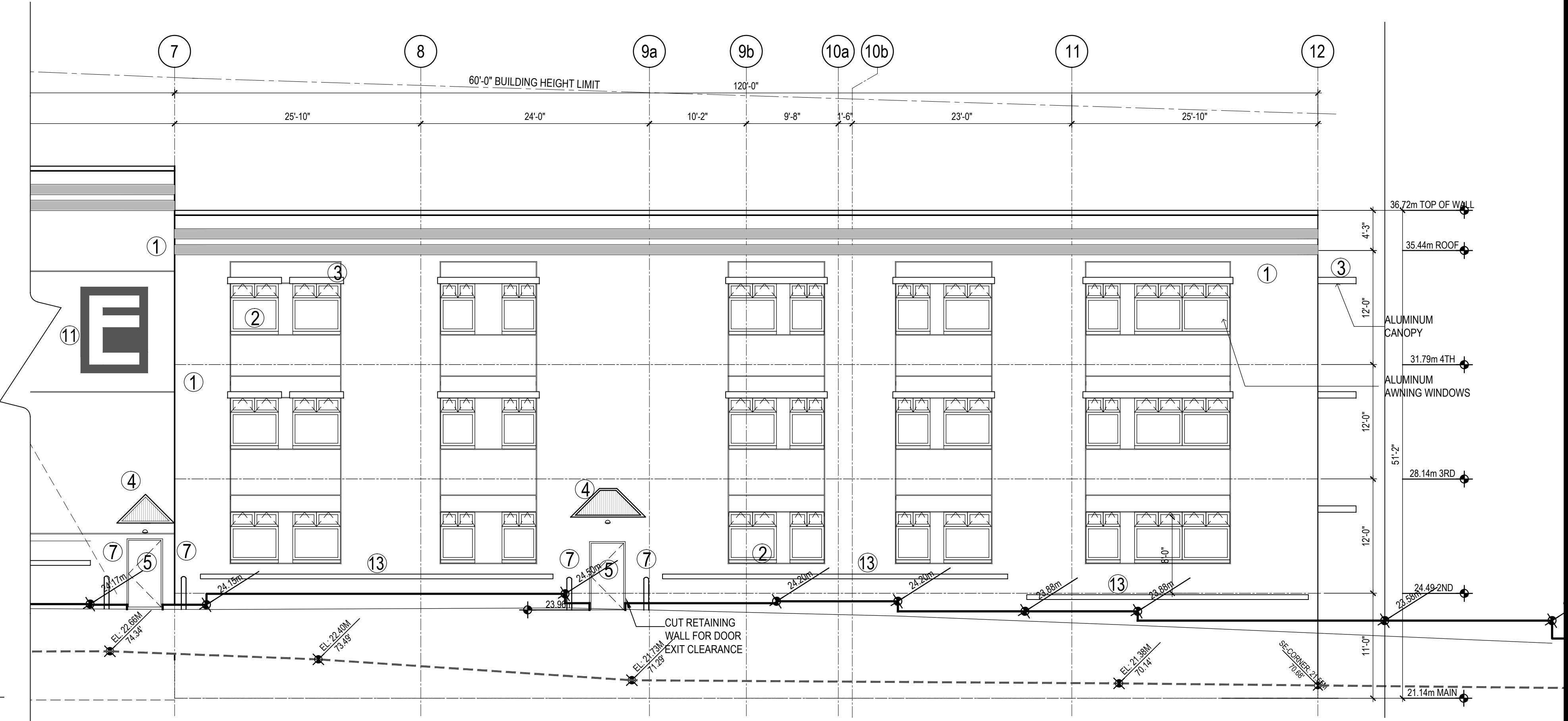
- ① TILT-UP CONCRETE WALL WITH REVEAL LINES, PAINTED
- ② CLEAR ANODIZED ALUMINUM WINDOW FRAMES
- ③ PAINTED ALUMINUM SUN SHADE
- ④ PAINTED STANDING SEAM STEEL CANOPY
- ⑤ PAINTED STEEL DOOR
- ⑥ ALUMINUM FRAMED GLAZED DOOR
- ⑦ PAINTED STEEL BOLLARD
- ⑧ OVERHEAD DOOR, PAINTED STEEL
- ⑨ VENTILATION SCREEN, PAINTED STEEL MESH
- ⑩ MECHANICAL SCREEN PAINTED STEEL, 50% OPEN LOWER SECTION
- ⑪ PAINTED SIGNAGE
- ⑫ RAIN WATER LEADER, PAINTED STEEL, WITH PROTECTIVE CAGE AT GRADE LEVEL
- ⑬ PAINTED STEEL GUARD RAIL
- ⑭ PAINTED EXHAUST GRILL

1 SOUTH ELEVATION-STUDIO
A2.02 1/8"=1'-0"

EXTERIOR FINISHES

- ① TILT-UP CONCRETE WALL WITH REVEAL LINES, PAINTED
- ② CLEAR ANODIZED ALUMINUM WINDOW FRAMES
- ③ PAINTED ALUMINUM SUN SHADE
- ④ PAINTED STANDING SEAM STEEL CANOPY
- ⑤ PAINTED STEEL DOOR
- ⑥ ALUMINUM FRAMED GLAZED DOOR
- ⑦ PAINTED STEEL BOLLARD
- ⑧ OVERHEAD DOOR, PAINTED STEEL
- ⑨ VENTILATION SCREEN, PAINTED STEEL MESH
- ⑩ MECHANICAL SCREEN PAINTED STEEL, 50% OPEN LOWER SECTION
- ⑪ PAINTED SIGNAGE
- ⑫ RAIN WATER LEADER, PAINTED STEEL, WITH PROTECTIVE CAGE AT GRADE LEVEL
- ⑬ PAINTED STEEL GUARD RAIL
- ⑭ PAINTED EXHAUST GRILL

2 SOUTH ELEVATION-OFFICE
A2.02 1/8"=1'-0"



TYPE OF WORK
VANCOUVER FILM STUDIO-E & OFFICE-F
2626 SKEENA ST & 3596 CORNETT ROAD
CLIENT'S DETAILS



120, 1412-7TH AVENUE, VANCOUVER BRITISH COLUMBIA, CANADA V6H4H2
TEL: 604-681-4292 FAX: 604-681-4257
EMAIL ADDRESS: SRARCH@SRARCH.NET

SOUTH ELEVATIONS

PROJECT No.: 7057
SCALE @ 22x34: AS NOTED
DRAWN BY: AK
DATE: FEB 19, 2018
REVISION No.: 0

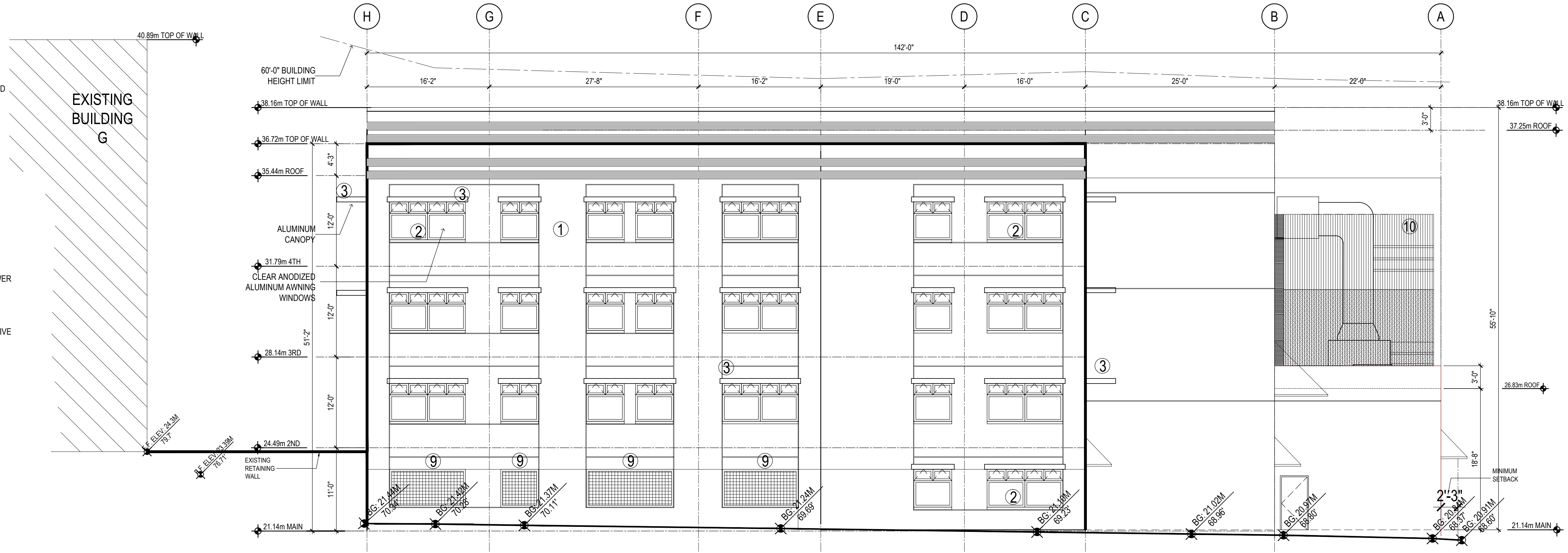
A2.02

© Copyright Reserved. This drawing and design are, and at all times remain, the property of Soren Rasmussen Architects Inc., and can be reproduced only with written consent. This drawing must not be scaled. Contractors shall verify all dimensions prior to commencement of work, and any omissions or discrepancies shall be reported to the Architect

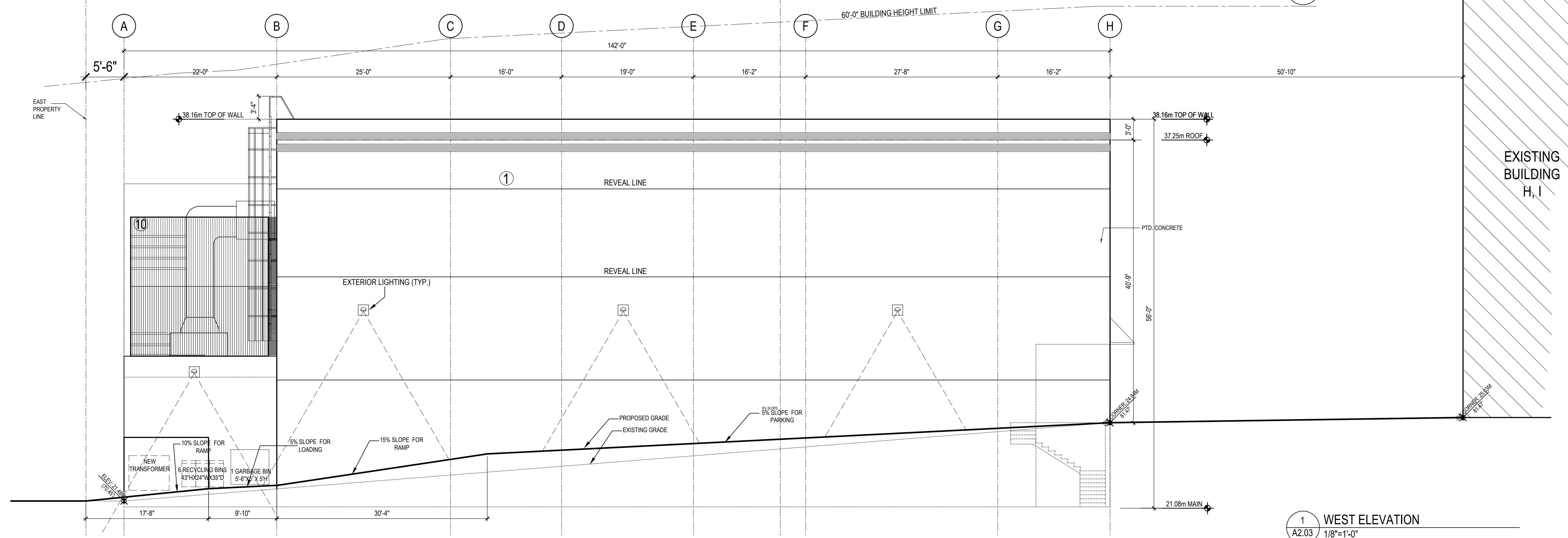
REVISION	DATE	ISSUE FOR
JUN 01, 2018		SOLAR PANELS PLACED AT ROOF
JUN 16, 2018		ALUM CANOPY PLACED AT WINDOWS
JUL 11, 2018		REVIEW
JUL 18, 2018		MODIFIED PROJECT TITLE

EXTERIOR FINISHES

- ① TILT-UP CONCRETE WALL WITH REVEAL LINES, PAINTED
- ② CLEAR ANODIZED ALUMINUM WINDOW FRAMES
- ③ PAINTED ALUMINUM SUN SHADE
- ④ PAINTED STANDING SEAM STEEL CANOPY
- ⑤ PAINTED STEEL DOOR
- ⑥ ALUMINUM FRAMED GLAZED DOOR
- ⑦ PAINTED STEEL BOLLARD
- ⑧ OVERHEAD DOOR, PAINTED STEEL
- ⑨ VENTILATION SCREEN, PAINTED STEEL MESH
- ⑩ MECHANICAL SCREEN PAINTED STEEL, 50% OPEN LOWER SECTION
- ⑪ PAINTED SIGNAGE
- ⑫ RAIN WATER LEADER, PAINTED STEEL, WITH PROTECTIVE CAGE AT GRADE LEVEL
- ⑬ PAINTED STEEL GUARD RAIL
- ⑭ PAINTED EXHAUST GRILL



1 EAST ELEVATION
A2.01 1/8"=1'-0"



1 WEST ELEVATION
A2.03 1/8"=1'-0"

TYPE OF WORK
VANCOUVER FILM STUDIO-E & OFFICE-F
2626 SKEENA ST & 3596 CORNETT ROAD
CLIENT'S DETAILS



120, 1412-7TH AVENUE, VANCOUVER
BRITISH COLUMBIA, CANADA V6H4H2
TEL. 604-681-4292 FAX: 604-681-4257
EMAIL ADDRESS: SRARCH@SRARCH.NET

EAST WEST ELEVATIONS

PROJECT No.: 7057
SCALE @ 22x34: AS NOTED
DRAWN BY: AK
DATE: FEB 19, 2018
REVISION No.: 0

A2.03