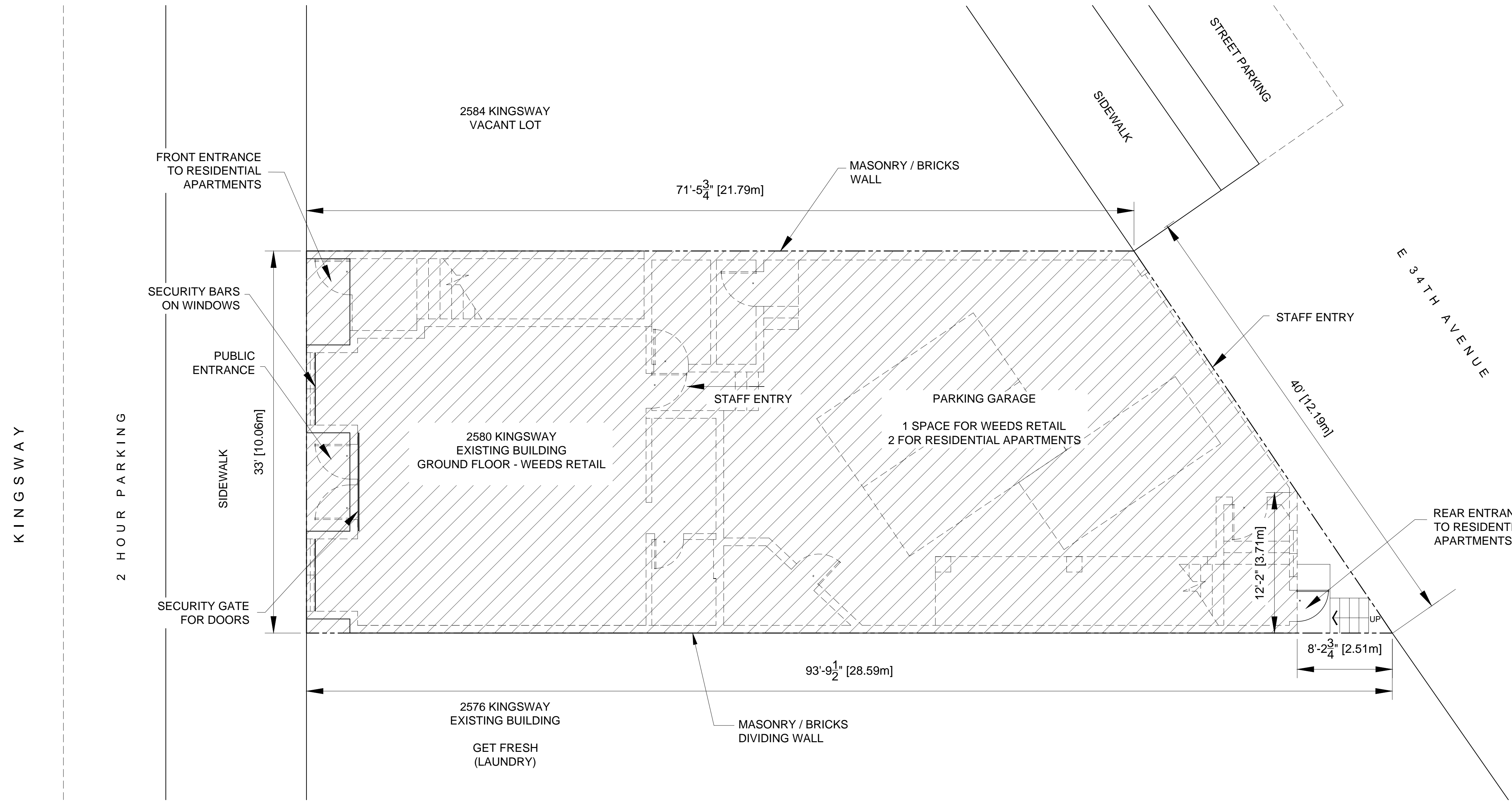


CLIMATIC DESIGN DATA: CITY OF VANCOUVER

1. 2.5% JANUARY DESIGN TEMPERATURE	-7°C
2. 1% JANUARY DESIGN TEMPERATURE	-9°C
3. 2.5% JULY DESIGN DRYBULB TEMPERATURE	26°C
4. 2.5% JULY DESIGN WETBULB TEMPERATURE	19°C
5. ANNUAL TOTAL DEGREE DAYS BELOW 18°C	2925
6. 15 MIN. RAINFALL	10mm
7. ONE DAY RAINFALL (1/50)	112mm
8. ANNUAL RAINFALL	1325mm
9. MOISTURE INDEX	1.44mm
10. ANNUAL TOTAL PRECIPITATION	1400mm
11. DRIVING RAIN AND WIND PRESSURE (1/5)	160Pa
12. GROUND SNOW LOAD, Ss (1/50)	1.8kPa (37.6 psf)
13. ASSOCIATED RAIN LOAD, Sr (1/50)	0.2 kPa (4.2 psf)
14. HOURLY WIND PRESSURES:	
PROBABILITY 1/10	0.36 kPa (7.51 psf)
PROBABILITY 1/50	0.48 kPa (10.0 psf)
15. SEISMIC DATA:	
Sa (0.2)	0.94
Sa (0.5)	0.64
Sa (1.0)	0.33
Sa (2.0)	0.17
PGA	0.46



**NOTE:**  
 FULL HEIGHT WALLS WITH NO CONNECTING DOORS BETWEEN WEEDS STORE AND CONNECTING BUSINESSES

NO ACCESS TO PRIVATE RESIDENTIAL APARTMENTS ABOVE

ZONING: C3-A COMMERCIAL

PLAN SHOWING THE LOCATION OF :  
 LOT A BLOCK 1 PLAN VAP5441  
 DISTRICT LOT 52 LAND DISTRICT 36  
 EXCEPT PLAN REF PLAN 2407 OF LOT 16, & BLK 2

PID: 011-157-534

CIVIC ADDRESS  
 2580 KINGSWAY,  
 VANCOUVER, B.C. V5R 5H2

AREA  
 LOWER FLOOR AREA = 2490 SQ. FT.  
 WEEDS RETAIL AREA = 900 SQ. FT.

**WEEDS**  
 2580 KINGSWAY  
 VANCOUVER, B.C. **PLAN: VAP5441**

DRAWING IN COMPLIANCE TO THE CITY OF VANCOUVER BUILDING CODE 2018	SCALE: 3/16"=1'-0"	APPROVED BY:	DRAWN BY: W.S.L.
	DATE: DEC 14 2018		REVISED
DRAWING BY:  WestCAD Services Ltd.	902 RODERICK AVENUE - UNIT 200 COQUITLAM, B.C. V3K 1R1 Tel. 604-421-3806 Fax. 604-421-3808		<b>SITE PLAN</b>
			DRAWING NUMBER SH. 2 OF 3 W-002