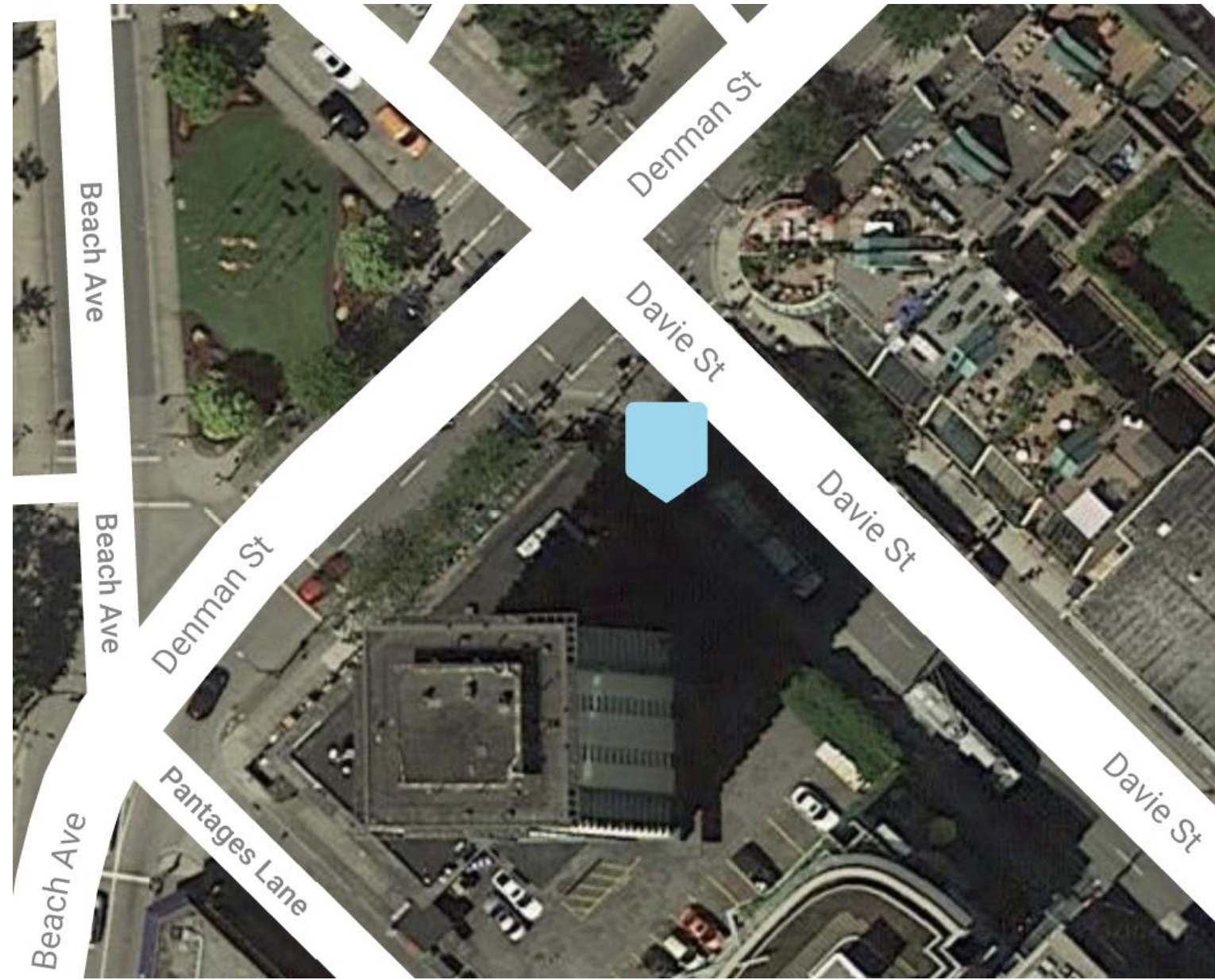
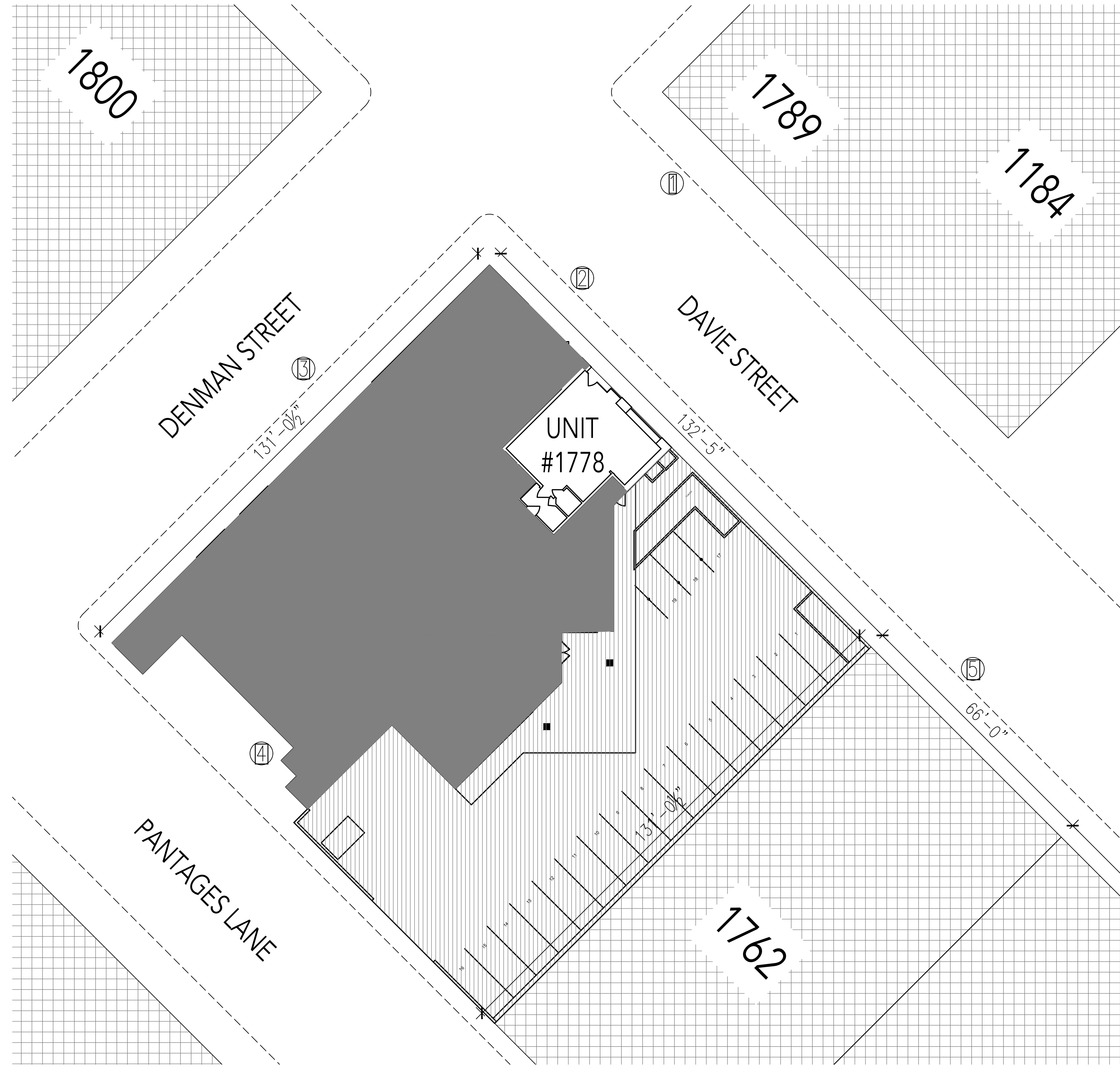


1 LAND PARCELS
ID 2 SCALE: NTS



2 AERIAL VIEW
ID 2 SCALE: NTS



3 1770 BUILDING PLAN
ID 2 SCALE: 1/16" = 1'-0"

Legal Description:
PARCEL D (BEING A
CONSOLIDATION OF LOTS 13
AND 14, SEE CA7449540) BLOCK
62 DISTRICT LOT 185 GROUP 1
NEW WESTMINSTER DISTRICT
PLAN 92

LOCAL BUSINESSES

- ① STARBUCKS
- ② THE THREE BRITS
- ③ THE BLIND SPARROW
- ④ HOOK SEABAR
- ⑤ ENGLISH BAY BIKES