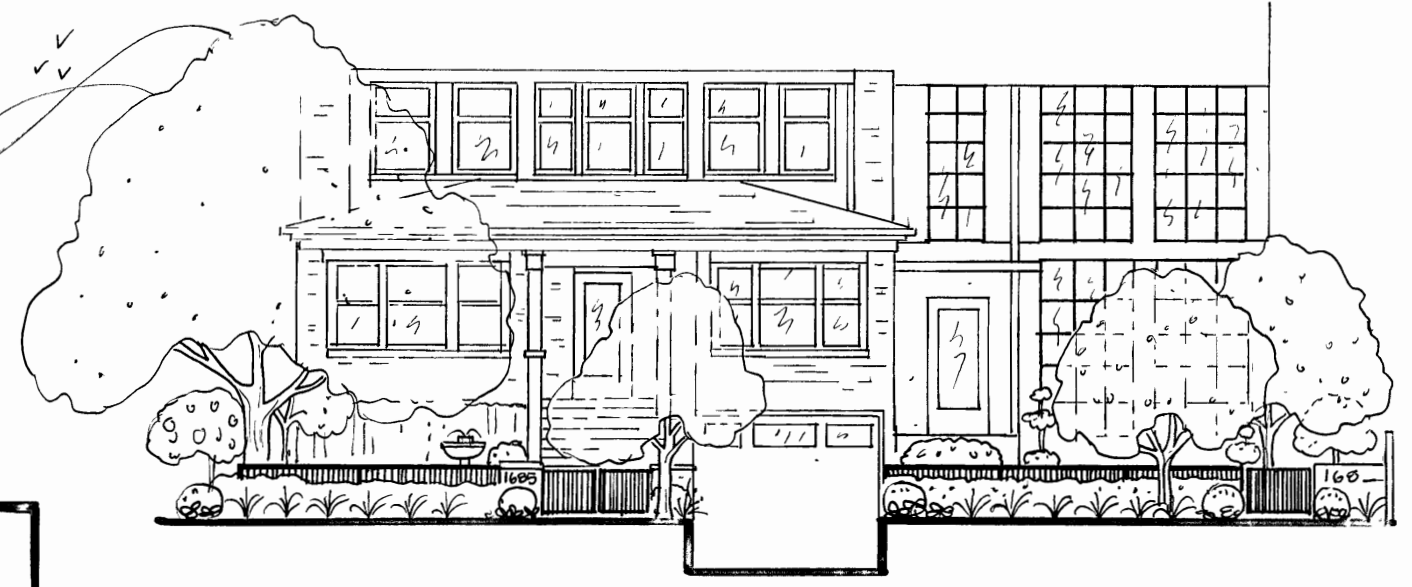
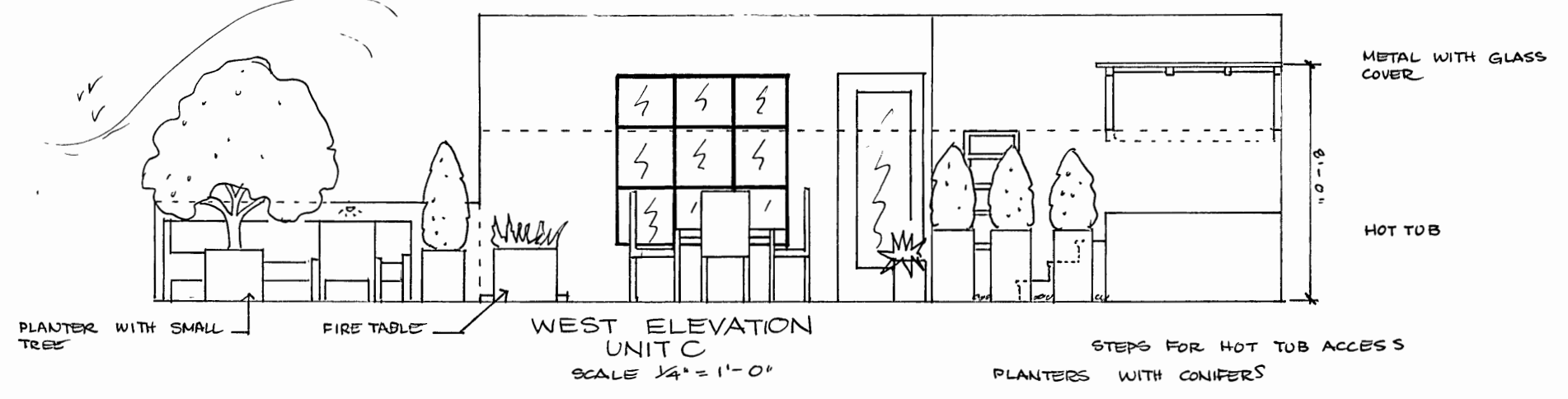
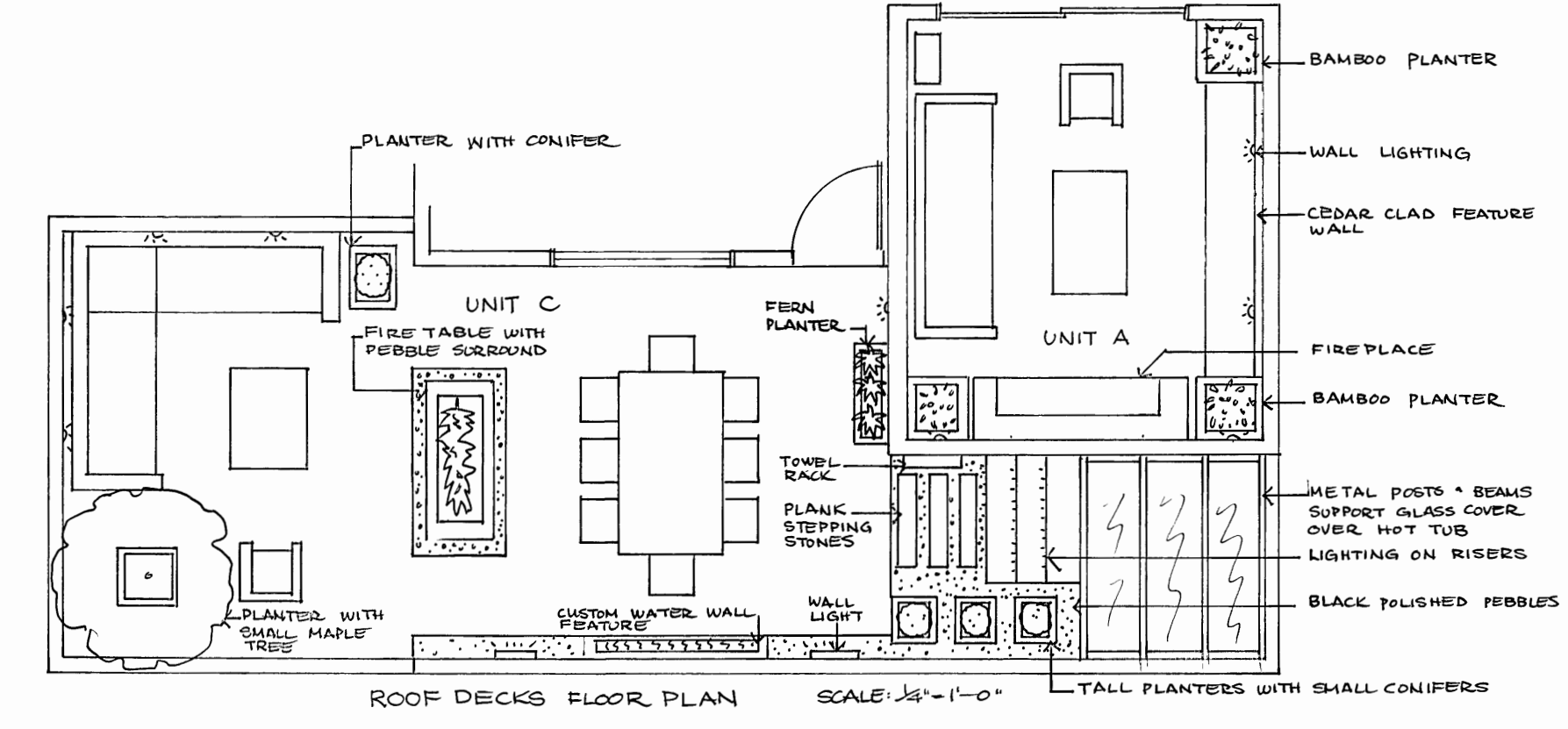
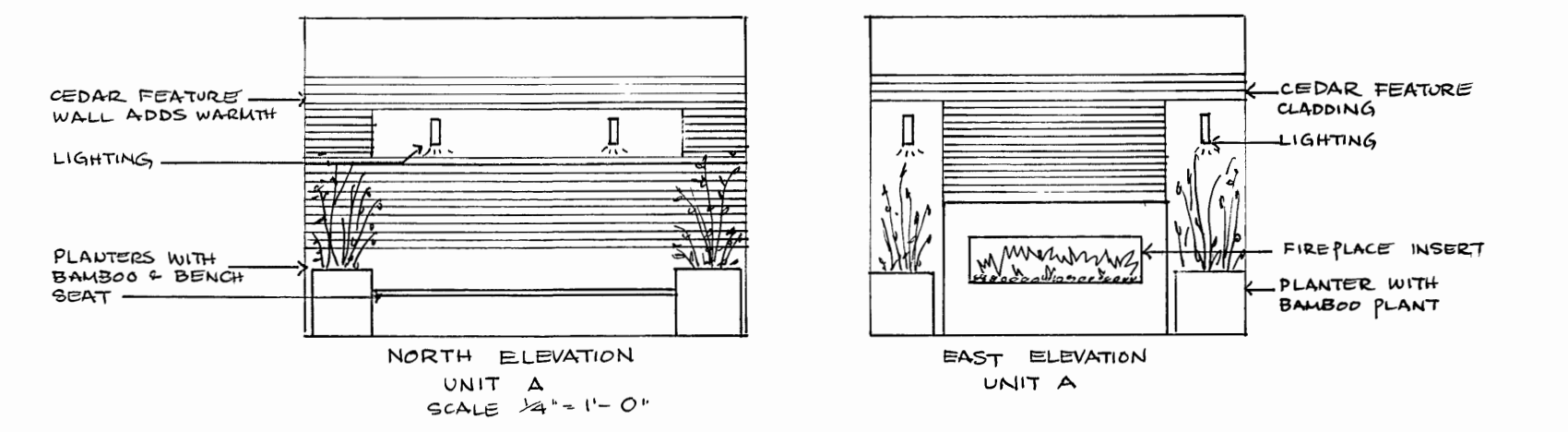
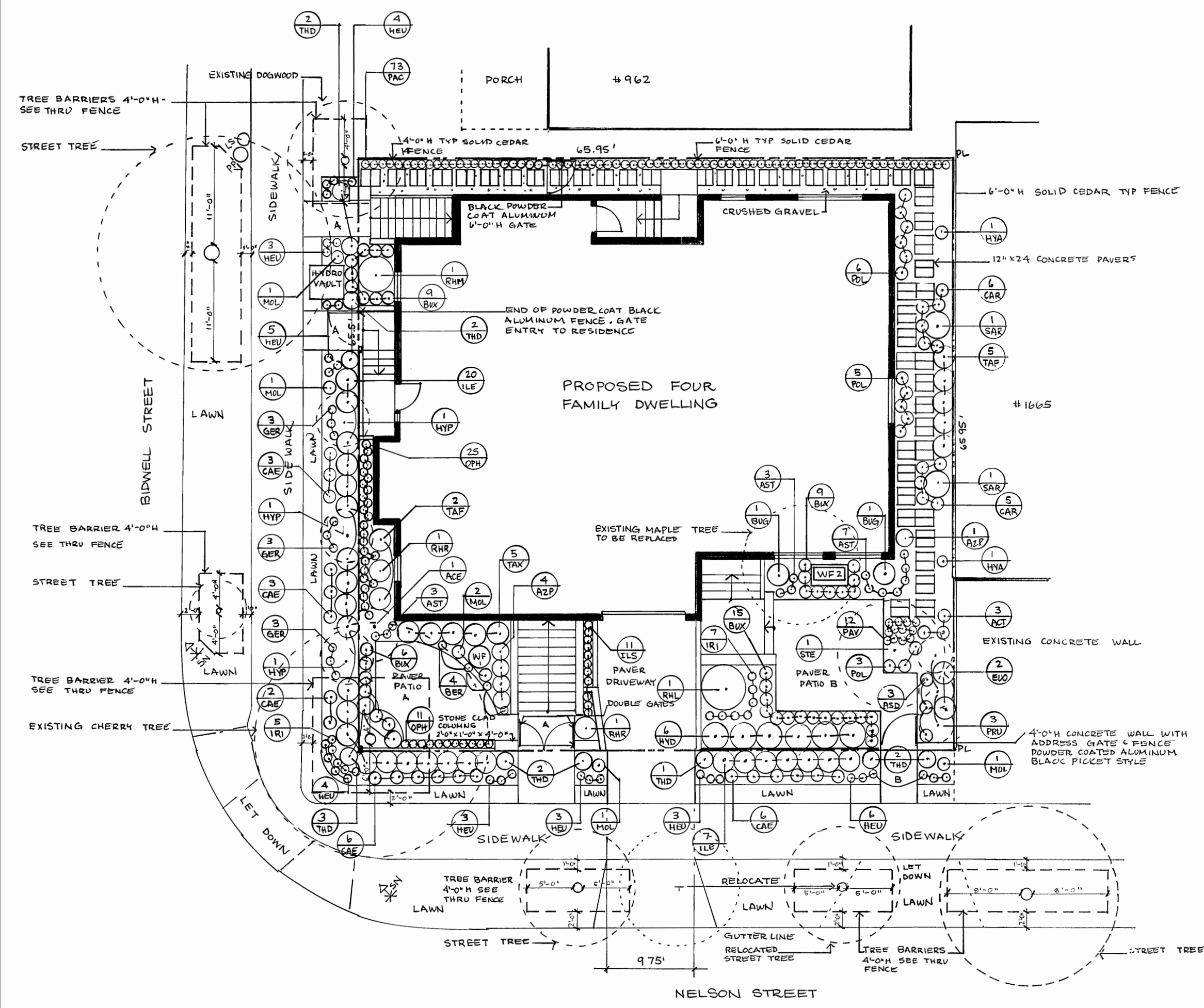


**FOR THE TREE PROTECTION INFORMATION PLEASE REFER TO THE TREE MANAGEMENT PLAN, PAGE A-20**



ELEVATION FROM NELSON STREET  
SCALE: 1/8" = 1'-0"

THIS DRAWING IS NOT FOR CONSTRUCTION PURPOSES UNLESS EXPRESSLY STATED. ALL RIGHTS RESERVED AND REPRODUCTIONS OR USE IN ANY FORM MUST BE APPROVED BY CRESCENT BAY DESIGN.  
DO NOT SCALE DRAWINGS. DIMENSIONS SHOWN ARE APPROXIMATE. CONTRACTOR TO VERIFY ON SITE AND COORDINATE WITH ALL TRADES, SUPPLIERS, EQUIPMENT AND SITE CONDITIONS.  
IF THE GENERAL CONTRACTOR OR SUBTRADE CONTRACTOR FAILS TO REPORT A DISCREPANCY TO THE DESIGNER & OWNER OR FAILS TO ACT ON ANY CHANGE NOTICE ISSUED BY THE DESIGNER & OWNER, ALL REPERCUSSIONS OF THIS DECISION SHALL BE THE CONTRACTOR'S RESPONSIBILITY.  
ALL MATERIALS AND EXECUTION OF LANDSCAPE WORK SHALL CONFORM TO B.C.S.L.A.M.C.N.T.A. LANDSCAPE STANDARDS. REFER TO WRITTEN SPECIFICATIONS FOR COMPLETE LANDSCAPE DOCUMENTATION.

Symbol	Qty	Botanical Name	Common Name	Size
TRN	1	Acer palmatum 'Shogungho'	Japanese Maple	3/4" x 12"
ACT	1	Acer palmatum 'Shogungho'	Japanese Maple	3/4" x 12"
STB	1	Stewartia pseudacuta	Japanese Stewartia	3/4" x 12"
CDR	7	Camellia japonica 'Fragrant'	Camellia	3/4" x 12"
TAF	7	Camellia japonica 'Fragrant'	Camellia	3/4" x 12"
TAS	5	Camellia japonica 'Fragrant'	Camellia	3/4" x 12"
THD	12	Thuja occidentalis 'Danae'	Danae Globe Cedar	12"
SHR	4	Andromeda japonica 'Pinnat White'	Pinnat White Azalea	12"
BLU	2	Buxus sempervirens 'Top 5 Tree'	Top 5 Tree Buxus	12"
BUX	39	Buxus sempervirens 'Suffruticosa'	Dwarf English Boxwood	12"
ELC	2	Elaeagnus argentea 'Emerald Green'	Emerald Green Elaeagnus	12"
HYD	6	Hydrangea macrophylla 'Wadding Green'	Wadding Green Hydrangea	12"
HYF	3	Hydrangea paniculata 'Uniqua'	Uniqua Panicle Hydrangea	12"
ILE	27	Ilex crenata 'Convexa'	Japanese Holly	12"
ILS	11	Ilex crenata 'Sky Pencil'	Sky Pencil Japanese Holly	12"
PRU	3	Prunus laurocerasus 'Lodoni'	Lodoni Laurel	12"
RHL	1	Rhododendron 'Lee's Dark Purple'	Lee's Dark Purple Rhododendron	12"
RHM	1	Rhododendron 'Satanstoeke'	Satanstoeke Rhododendron	12"
RHR	2	Rhododendron 'Tango'	Tango Rhododendron	12"
SAR	4	Sarcococca nudicaulis	Fragrant Sarcococca	12"
PER	3	Actaea simplex 'Thunbergii'	Black Lizard Bugbane	12"
AST	15	Aspidistra 'Viviana'	Viviana Spider Plant	12"
ASD	3	Aspidistra 'Thunbergii'	Thunbergii Spider Plant	12"
BER	4	Bergenia cordifolia 'Winterglut'	Winterglut Bergenia	12"
BER	9	Bergenia ciliata 'Winterglut'	Winterglut Bergenia	12"
HEU	31	Heuchera 'Obsidian'	Obsidian Coral Bell	12"
IRE	12	Impatiens 'Alba Variegata'	Silver Variegated Sweet Flag	12"
JAC	73	Japanese Iris	Japanese Iris	12"
JAV	12	Japanese Iris	Japanese Iris	12"
PL	14	Polystichum polypodioides	Japanese Forest Fern	12"
GRS	20	Carex obovata 'Everglade'	Everglade Sedge	12"
CAR	11	Carex obovata 'Everglade'	Everglade Sedge	12"
MOL	6	Holcus lanatus 'Imperial'	Imperial Grass	12"
OPH	38	Opuntia 'Black Mondo Grass'	Black Mondo Grass	12"
HYA	2	Hydrangea 'Petalase'	Clashing Hydrangea	12"

**PLANTING NOTES**

- ALL MATERIALS AND EXECUTION OF LANDSCAPE WORKS SHALL CONFORM TO THE B.C.S.L.A.M.C.N.T.A. STANDARDS. REFER TO WRITTEN SPECIFICATIONS FOR COMPLETE LANDSCAPE DOCUMENTATION.
- ALL LANDSCAPE CONTRACTORS SHALL ENSURE THE ON-SITE PLANTING MEDIA/POLE MEETS THE SPECIFICATIONS AND RECOMMENDATIONS OF THE SOIL ANALYSIS TAKEN AT THE TIME OF THE SUBSTANTIAL COMPLETION.
- PLANTING MEDIUM DEPTHS:  
LAWNS - 4" x 12"  
GRASS/COVER - 12" x 30"  
SHRUBS - 18" x 30"  
TREES - 12" x 30" (AROUND AND BENEATH ROOTBALLS)
- ALL PLANT MATERIAL TO MEET MINIMUM SIZE REQUIREMENTS AS INDICATED IN THE PLANT LIST. QUALITY OF PLANT MATERIAL AND GRADING OF SITE TO CONFORM TO B.C.S.L.A.M.C.N.T.A. STANDARD FOR CONTAINER GROWN STOCK.
- ALL PLANT MATERIAL TO BE SUPPLIED TO THE JOB SITE MUST BE OBTAINED FROM A NURSERY PARTICIPATING IN THE B.C.S.L.A.M.C.N.T.A. PHYTOPHTHORA RAMPART CERTIFIED PROGRAM. PLANT MATERIAL PROVIDED BY THE CONTRACTOR FOR CARRYING PURPOSES WILL BE REMOVED, DISPOSED OF AND REPLACED AT THE CONTRACTOR'S EXPENSE.
- THREE PROTECTION MEASURES (SEE CONSTRUCTION DOCUMENTATION OR EXCAVATION IS TO CONFORM TO THE CITY OF VANCOUVER TREE PROTECTION BYLAWS)
- TREE STAKING:  
ALL STAKING NEW TREES TO CONFORM TO STANDARDS SET BY THE B.C.S.L.A.M.C.N.T.A.

**NOTES:**

**PAVING MATERIALS**  
DRIVEWAY, WALKWAY & PATIO A

ABBOTSFORD OLD COUNTRY STONE  
PATTERN TYPE 1 OFFSET RUNNER BOND  
COLOUR SHADOW BLEND  
BORDER SOLDIER COURSE  
SIZE TYPE 2  
COLOUR SHADOW BLEND

**WALKWAY B, PATIO B & PAVEMENT PATHWAY**

ABBOTSFORD HYDRAPRESSED SLABS  
STYLE TEXADA  
SIZE 12" x 24"  
COLOUR CHARCOAL

**ROOF TOP PAVING**

ABBOTSFORD ARISTOKRAT SERIES  
UNIT A  
GLACIER GRANITE  
PATTERN RANDOM PATTERN 6  
UNIT  
BEACHWOOD  
PATTERN PLANK RUNNER BOND 2

\* TYPES OF GRAVEL/ROCK NOTED ON DRAWING

**PLANTERS**  
UNIT A - GRANITO CUBI AUTHENTIC GREY PLANTERS  
UNIT - GRANITO CUBI & CUBIHI ANTHROCITE PLANTERS



PROJECT:  
  
**MIRAVEL PROPERTIES LTD.**  
1685 NELSON ST.  
VANCOUVER, BC.

REVISIONS  
# DATE  
  
**LANDSCAPE PLAN**

PAGE NO.  
1 OF 1

**CRESCENT BAY DESIGN**

LEANNE MASON  
2669 MCBRIDE AVE.  
SURREY, B.C. V4A 3E9  
604.313.4466  
leanne.mason@telus.net

SCALE: 1/8" = 1'-0"  
DATE: AUG. 28/18