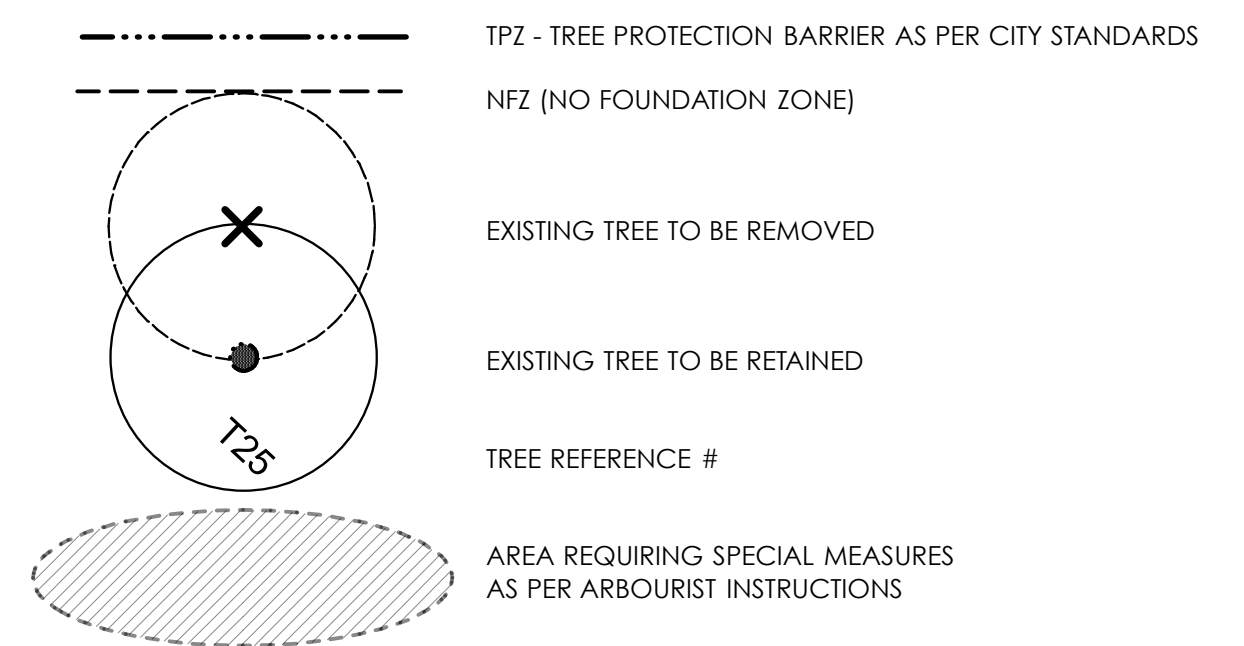


**LEGEND:**



**NOTES:**

- TREE PROTECTION PLAN BASED ON ARBOURIST REPORT BY MOUNTAIN MAPLE GARDEN AND TREE SERVICE LTD. & TREE SERVICES DATED JUNE 18, 2019 SUBMITTED AS PART OF THIS APPLICATION
- OTHER:**
- Tree protection measures are based on arborist report by MOUNTAIN MAPLE GARDEN AND TREE SERVICE LTD. Refer to report for more detailed information
  - Absolutely no access to be allowed within Tree Protection Barriers
  - Absolutely no materials to be stored within Tree Protection Barriers
  - Absolutely no portable toilets to be located within Tree Protection Barriers
  - Barriers are not to be removed or altered until demolition and construction have been completed.
  - General Contractor to ensure no services to be located in tree protection zone.
  - General contractor to ensure all trades and subtrades are aware and follow tree protection measures.

**PRIOR TO DEMOLITION OR TREE REMOVAL:**

GENERAL CONTRACTOR TO READ THE TREE REPORT PREPARED BY MOUNTAIN MAPLE GARDEN AND TREE SERVICE LTD.

**ARBOURIST VISITS:**

THE SITE MANAGER IS TO CONTACT THE PROJECT ARBOURIST IN ADVANCE OF THE FOLLOWING WORK:

**PROJECT START UP:** TO CLARIFY TREE PROTECTION MEASURES, AND APPROVED METHODS OF REMOVING TREE #8

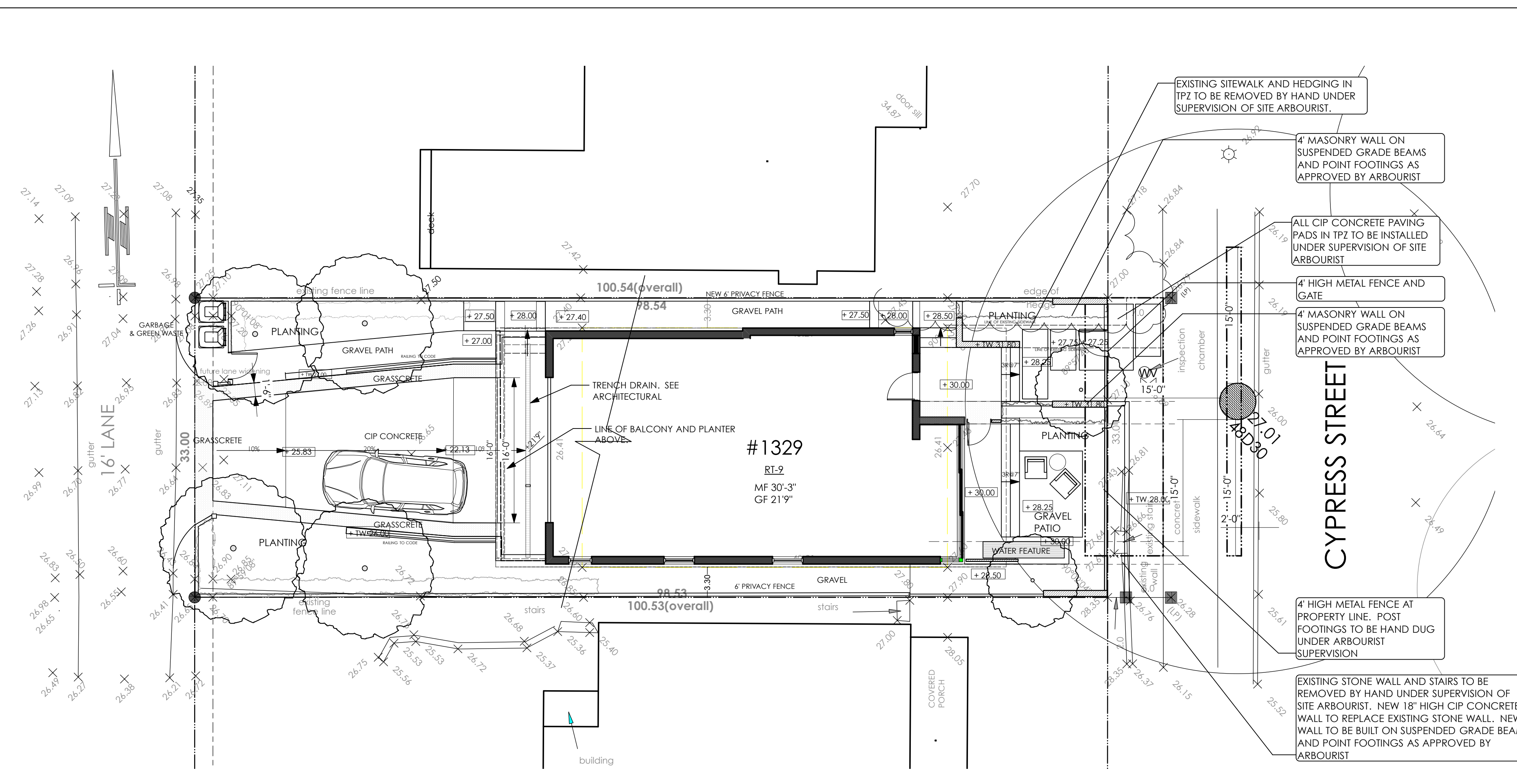
**PRIOR TO DEMOLITION:** INSPECTION OF PROTECTION BARRIERS PRIOR TO DEMOLITION

**EXCAVATION:** THE ARBOURIST SHOULD BE ON SITE DURING ANY EXCAVATION OR SITE DISTURBANCE WITHIN 1 M OF THE PROTECTED TREES, INCLUDING BUT NOT LIMITED TO REMOVAL OF EXISTING WALL ALONG FRONT PROPERTY LINE AND REMOVAL OF EXISTING FRONT SIDEWALK IN TREE PROTECTION ZONE

**SITE ACCESS:** ANYTIME THAT ACCESS IS REQUIRED WITHIN THE TREE PROTECTION ZONE

**LANDSCAPE START UP:** THE LANDSCAPE CONTRACTOR IS TO MEET WITH THE PROJECT ARBOURIST PRIOR TO THE REMOVAL OF THE PROTECTIVE FENCING TO REVIEW PROPOSED WORK WITHIN THE PROTECTED ZONES.

**SITE WORK:** CONSTRUCTION OF NEW RETAINING WALL NEAR FRONT PROPERTY LINE, INSTALLATION OF NEW FENCING, WING WALLS AND GATE LONG FRONT PROPERTY LINE, CONSTRUCTION OF FRONT SIDEWALK IN TPZ.



**1 LANDSCAPE PLAN**  
Scale: 1/8" = 1'-0"

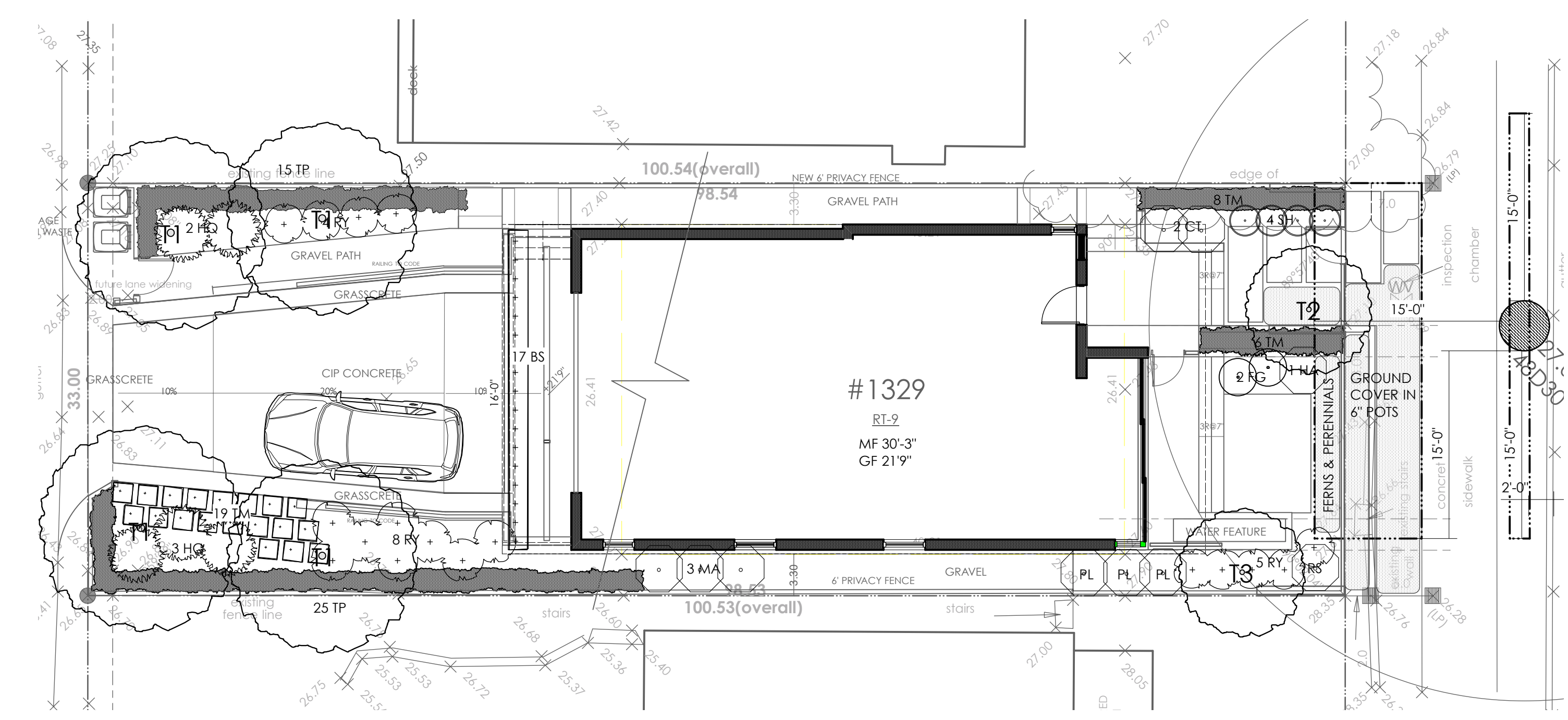
Professional Seal

**PLANT LIST**

CODE	QTY	BIRD FRIENDLY	NAME	COMMON NAME	COMMENTS
<b>TREES</b>					
T3	1	*	Acer circinatum 'Pacific Fire'	Japanese Maple	8' ht, B&B full
T1	4	*	Magnolia grandiflora 'DD Blanchard'	Evergreen magnolia	4m ht., full, on standard
T2	1	*	Parrotia 'Vanessa'	Persian Ironwood	3.5m ht., on 5' standard
<b>SHRUBS</b>					
BS	17		Buxus sempervirens 'Green Gem'	English Boxwood	#2 pot @ 18" oc
CT	2		Choisya ternata 'Aztec Pearl'	Mexican Mock Orange	#5 pot
FG	2		Fothergilla gardenii	Dwarf Fothergilla	#3 pot
HA	1		Hydrangea aspera 'Plum Passion'	Plum Passion Hydrangea	#7 pot
HQ	5		Hydrangea quercifolia 'Snow Queen'	Oakleaf Hydrangea	# 5 pot
MM	3	*	Mahonia aquifolium	Oregon Grape	#3 pot
PL	3		Prunus lusitanica 'Lolita'	Small Leaf Portugese Laurel	6' ht., B&B
RY	17		Rhododendron yak. 'Ken Janeck'	Rhododendron	#5 pot
RS	1	*	Ribes sanguineum 'White Icicle'	Flowering Currant	#1 pot
SH	4		Sarcococca humilis	Himalayan Sweetbox	#2 pot 18" o.c.
TM	14		Taxus media 'Hicksii'	Yew	6' ht., @ 18" o.c., B&B
TR	18		Taxus repandens	Yew	#3 pot @ 2' o.c.
<b>PERENNIALS, GROUNDCOVER &amp; FERNS</b>					
Au	*		Arctostaphylos uva ursi	Kinnickinck	4" pots @ 12" o.c
Am	*		Astrantia major	Masterwort	#1 pot @ 1' o.c.
Er	*		Epimedium	Bishops Hat	#1 pot @ 1' o.c.
Mr	*		Maianthemum racemosa	False Solomon's seal	#1 pot @ 18" o.c.
PQ	*		Parthenocissus quinquefolia	Virginia creeper	#1 pot
PI	*		Pachysandra terminalis 'Green Sheen'	Japanese Spurge	6" pot @ 8" o.c.
Pa	*		Perovsia atriplicifolia	Russian Sage	#1 pot
Pm	*		Polystichum munitum	Sword Fern	#1 pot
Sp	*		Salvia 'Purple Rain'	Perennial Sage	#1 pot 18" o.c.
Sn	*		Salvia nemerosa 'Caradonna'	Perennial Sage	#1 pot 18" o.c.

**NOTES:**

- All plants and planting to meet or exceed joint BCSLA/BCNTA Landscape Standards, latest edition
- Contractor to purchase plants only from nurseries certified free of Sudden Oak Death. All records of purchases must be retained and organized in an orderly manner for tracing purposes.
- Minimum planting medium depths as follows:
  - 6" lawn areas
  - 12" ground covers & perennials
  - 18" shrub areas
  - 1 cubic yard per tree root ball
- All tree protection barriers to be installed as specified in the City of Vancouver 'Private Property Tree By-Law'



**2 PLANTING PLAN**  
Scale: 1/8" = 1'-0"

**DONNA CHOMICHUK**  
LANDSCAPE ARCHITECT  
1662 West 75th Avenue Vancouver B.C. V6P 6G2  
Tel. 404.734.3826 dola@outlook.com

Project Title  
**GENOVESE RESIDENCE**  
1329 CYPRESS AVE.  
Vancouver, BC

Drawing Title  
**LANDSCAPE AND PLANTING PLANS**

Project Manager	Project ID	2019-02
Drawn By	Scale	1/8" = 1'-0"
Reviewed By	DC	Drawing No.
Date	07/10/19	<b>L1</b> of 1