



CONTRACTOR SHALL CHECK ALL DIMENSIONS ON THE WORK AND REPORT ANY DISCREPANCY TO THE CONSULTANT BEFORE PROCEEDING. THIS DRAWING IS NOT TO BE USED FOR CONSTRUCTION UNTIL AUTHORIZED IN WRITING BY CONSULTANT.



REVISION		
NO.	DATE	DESCRIPTION
1	11/2017	DRAFT DP SUBMISSION
2	11/15/2017	DP SUBMISSION

**B+H** B+H Architects  
 400-1706 West 1st Avenue  
 Vancouver, BC, Canada V6J 0E4  
 T:604.685.9913 F:604.685.0694

OWNER:  
**HOLBORN PROPERTIES LTD.**  
 4829 MAIN STREET  
 VANCOUVER, BC V5V3R9  
 PH: 604-598-2938 F: 604-688-8377

DESIGN ARCHITECT  
**MINISTRY OF DESIGN**  
 A-33A, MENARA UOA BANGSAR,  
 5 JALAN BANGSAR UTAMA 1  
 59000 KUALA LUMPUR, MALAYSIA  
 PH: 603-2201-5222

STRUCTURAL ENGINEER:  
**BRYSON MARKULIN ZICKMANTEL**  
 #700-609 WEST HASTINGS ST.  
 VANCOUVER, BC V6B4W4  
 PH: 604-685-9533 F: 604-685-9566

MECHANICAL ENGINEER:  
**WILLIAMS ENGINEERING**  
 SUITE 280, 1130 WEST PENDER ST.  
 VANCOUVER, BC V6E4A4  
 PH: 604-689-1915

ELECTRICAL ENGINEER:  
**WILLIAMS ENGINEERING**  
 SUITE 280, 1130 WEST PENDER ST.  
 VANCOUVER, BC V6E4A4  
 PH: 604-689-1915

ENERGY MODELLING:  
**WILLIAMS ENGINEERING**  
 SUITE 280, 1130 WEST PENDER ST.  
 VANCOUVER, BC V6E4A4  
 PH: 604-689-1915

ARBORIST CONSULTANT  
**ARBORTECH CONSULTING**  
 12051 HORSESHOE WAY #145  
 RICHMOND, BC V7A4V4  
 PH: 604-275-3484

TRAFFIC CONSULTANT:  
**BUNT & ASSOCIATES**  
 1050 W PENDER ST. #1550  
 Vancouver, BC V6E3S7  
 T: 604-685-6427

LANDSCAPE ARCHITECT:  
**PFS Studio**  
 1777 W 3rd Ave  
 Vancouver, BC V6J 1K7  
 T: 604-736-5168

CIVIL ENGINEER:  
**R.F. BINNIE & ASSOCIATES LTD.**  
 #205-4946 CANADA WAY  
 BURNABY, BC V5G4H7  
 T: 604-420-1721

BUILDING ENVELOPE CONSULTANT:  
**AQUA COAST ENGINEERING**  
 #201-5155 LADNER TRUNK ROAD  
 DELTA, BC V4K1W4  
 T: 604-946-9910

LEED PM:  
**KANE CONSULTING**  
 1353B PEMBERTON AVE.  
 NORTH VANCOUVER, BC V7P2R6  
 T: 604-924-0094

CODE CONSULTANT:  
**Thorson McAuley**  
 116-119 W Pender St.  
 Vancouver, BC V6B1S5  
 T: 778-834-6569

PROJECT:  
**LITTLE MOUNTAIN PRESENTATION CENTRE**

155 EAST 37TH AVENUE, VANCOUVER, BC

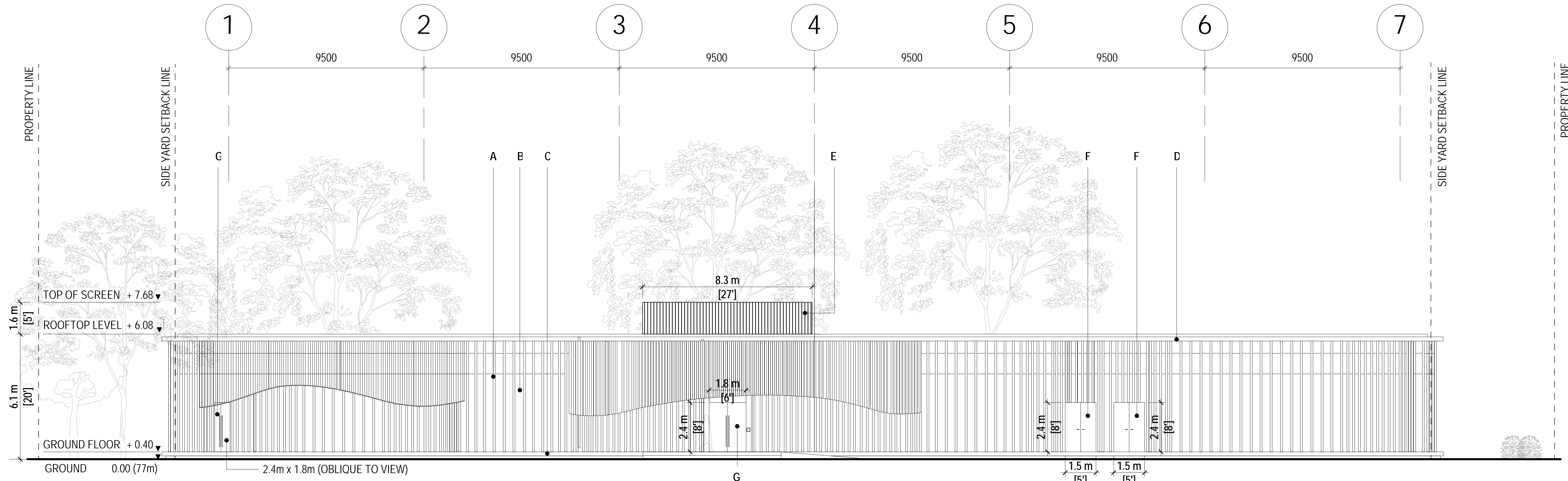
SHEET CONTENTS:  
**SOUTH AND WEST ELEVATIONS**

PROJECT NUMBER:  
**1714086**

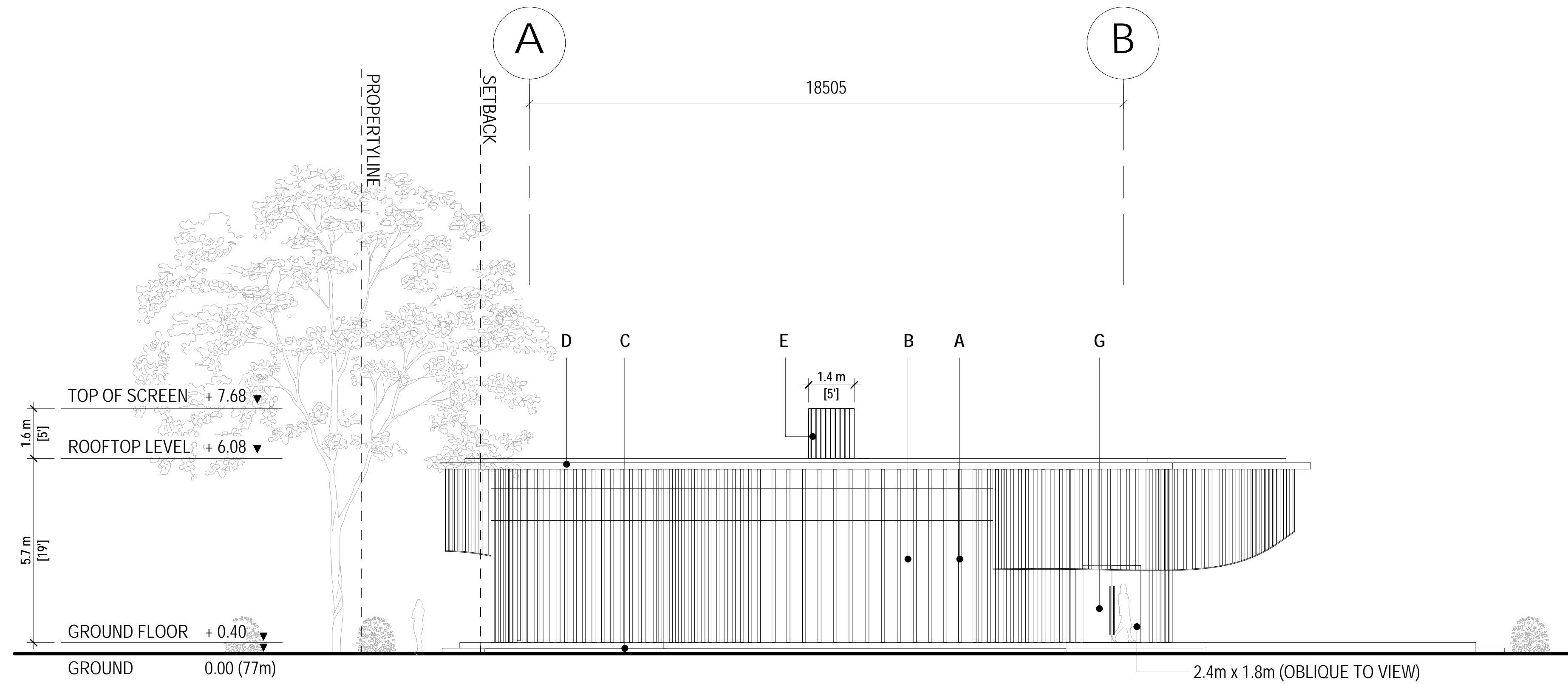
DRAWING SCALE:  
 As Indicated

DRAWN BY:	CHECKED BY:	DATE:
MOD/B+H	AM	11/14/17

SHEET NO.:	REV:
A301	2



**1 SOUTH ELEVATION**  
 SCALE: 1:100



**2 WEST ELEVATION**  
 SCALE: 1:100

**MATERIAL LEGEND:**

- A GOLD ANODIZED ALUMINIUM COLUMNS
- B ALUMINIUM WINDOW WALL - CLEAR ANODIZED FINISH
- C CAST IN PLACE ARCHITECTURAL CONCRETE
- D BLACK PREFINISHED METAL FLASHING
- E BLACK ANODIZED ALUMINIUM SCREEN
- F PAINTED INSULATED HOLLOW METAL DOOR
- G LAMINATED GLASS DOOR

**SITE DATUM**  
 77.00m = 0.00m  
 NOTE: FOR DETAILED GRADE PLAN REFER TO LANDSCAPE DRAWINGS

C:\Users\kajl\pmonah\Desktop\kari - 1714047 Phase 1B\20171106 - Little Mtn Presentation Centre\_south and west elevations

11/27/2017 9:06:12 AM A301