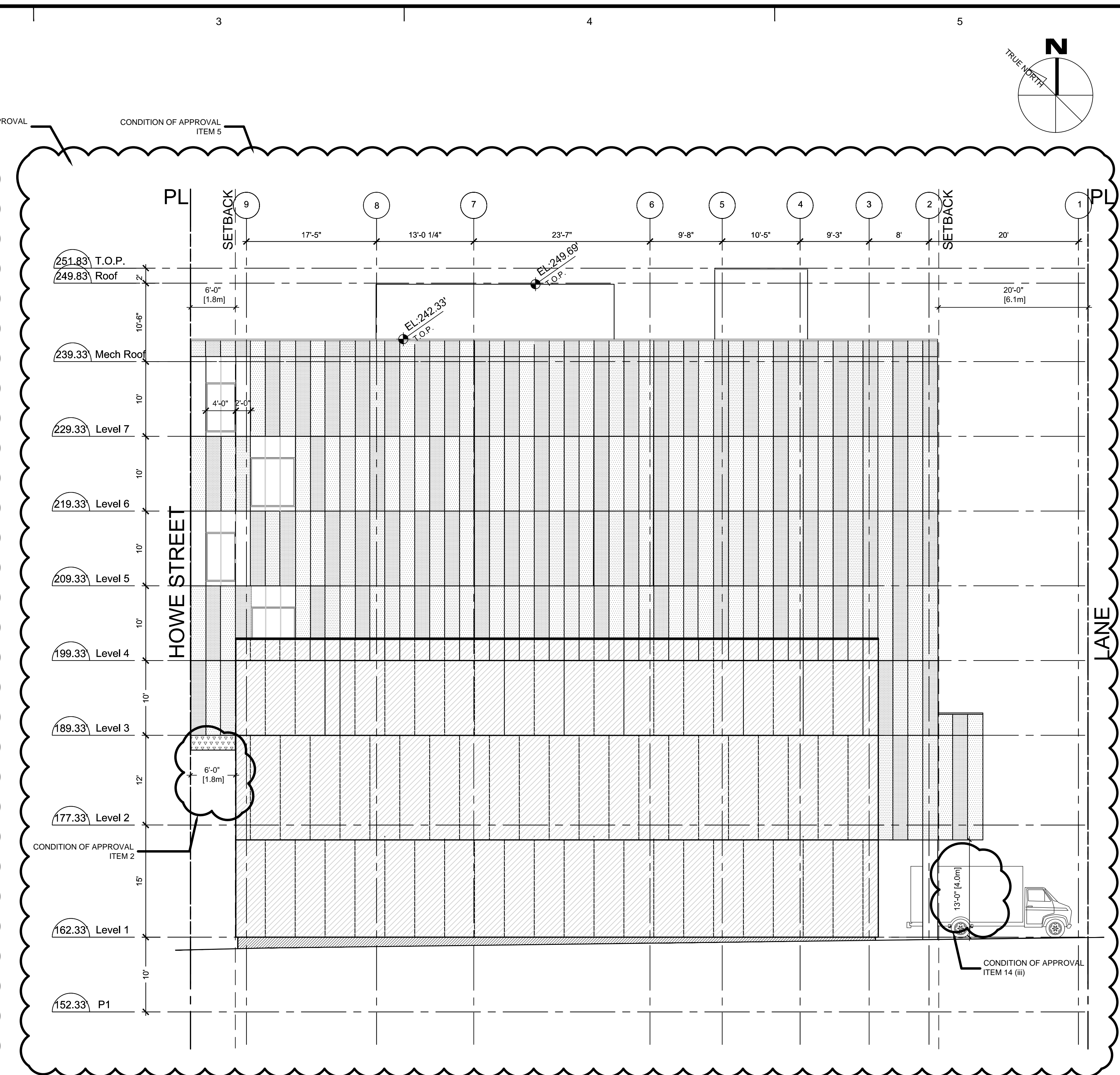


2 East Elevation
1/8" = 1'-0"



1 North Elevation
1/8" = 1'-0"

MATERIAL KEY			
NO.	HATCH	DESCRIPTION	COLOUR
01	[Hatch]	Metal or Concrete Panel	TONE 1
02	[Hatch]	Metal or Concrete Panel	TONE 2
03	[Hatch]	Metal or Concrete Panel	TONE 3
04	[Hatch]	Metal or Concrete Panel	TONE 4
05	[Hatch]	Metal or Concrete Panel	TONE 5
06	[Hatch]	Triple Glazed Certified Passive House Windows	Clear
07	[Hatch]	Lightbox / Signage	TBD by Artscape

COPYRIGHT:
 Any reproduction or distribution for any purpose other than authorized by IBI Group is forbidden. Written dimensions shall have precedence over scaled dimensions. Contractors shall verify and be responsible for all dimensions and conditions on the job and IBI Group shall be informed of any variations from the dimensions and conditions shown on the drawing. Shop drawings shall be submitted to IBI Group for approval before proceeding with fabrication.
 COPYRIGHT © 2013 IBI GROUP

NO.	DATE	DESCRIPTION
2	2017-05-05	ISSUED FOR DP
1	2016-10-04	ISSUED FOR REZONING

NO.	DATE	APPR	DESCRIPTION

NO.	DATE	APPR	DESCRIPTION

SEAL

SUB-CONSULTANT
acdf*
 ARCHITECTURE DESIGN URBAN INTERIOR
 1600, rue Comte St., Saint-Hyacinthe (Québec) Canada J2S 2Z7
 Montréal: T 450 778-1151 / F 450 778-1584
 5500, avenue de Canal, bur. 304, Montréal (Québec) Canada H2T 2A4
 T 514 488-0133 / F 514 488-0118

ROBERT LEMON ARCHITECT INC.
 3846 West 10th Avenue
 Vancouver, BC V5T 1G4
 Tel: (604) 224 2414

PRIME CONSULTANT
IBI GROUP ARCHITECTS (CANADA) INC.
 700 - 1285 West Pender Street
 Vancouver BC V6E 4B1 Canada
 tel 604 683 8797 fax 604 683 0492
 ibigroup.com

PROJECT TITLE
801 Pacific Street

CaGBC Project ID#: 18322

PROJECT NO: 37913
 DRAWN BY: JH
 CHKD BY: MB
 SCALE: 1/8" = 1'-0"
 DATE: 2017-05-05

SHEET TITLE
North + East Elevations

SHEET NUMBER
A2.01

REV: .-----

File Location: J:\37913_Henby_Grosvenor\ACAD\Sheets\ART\02_Elevations\AS-A\North + East Elevations.dwg - Last Saved: May 3, 2017, by emmanuils - Plotted: May 05, 2017 1:27:02 PM by Emma Arts