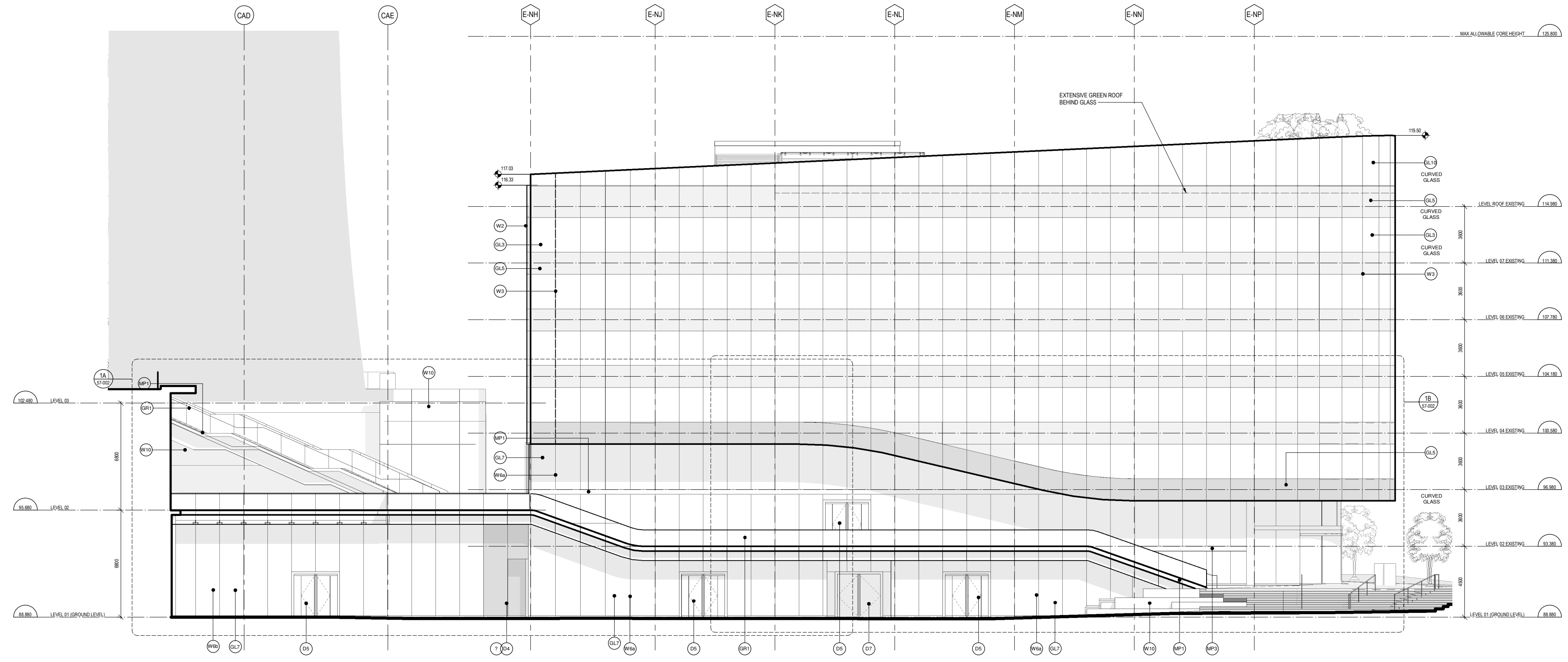
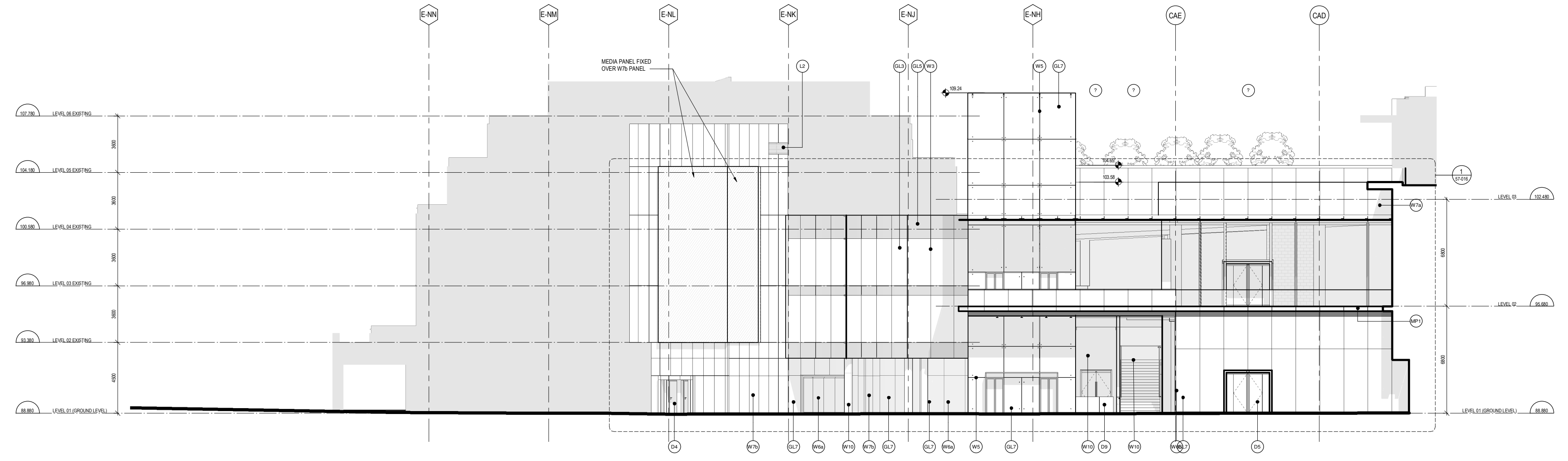


38" x 48" (914 x 1219) E SHEET SIZE



1 MALL ENTRY + EXISTING NE OFFICE - SOUTH-EAST ELEVATION  
1:100



2 MALL ENTRY + EXISTING TERRACES - NORTH-WEST ELEVATION  
1:100

HATCH LEGEND	
[Light Gray Hatch]	NOT INCLUDED IN SCOPE OF DP3A APPLICATION
[Dark Gray Hatch]	REFER TO ADAMSON ASSOCIATES ARCHITECTS' 100% DESIGN DEVELOPMENT - PODIUM

MATERIAL LEGEND			
<b>W - WALLS</b> W1 - UNITIZED CURTAIN WALL - 4 SIDED SSG W2 - UNITIZED CURTAIN WALL - 4 SIDED SSG (PLANAR) W3 - STRUCTURAL GLASS w/FNS - FIXED CONNECTIONS W4 - STRUCTURAL GLASS - BASE LOADED W5 - STRUCTURAL GLASS w/FNS - BASE LOADED W6 - PAINTED METAL PANEL W7 - TITANIUM COATED STAINLESS STEEL METAL PANEL W8 - METAL PANEL W9 - ARCHITECTURAL CONCRETE	<b>GL - GLASS (CONTINUED)</b> GL1 - VISION GLASS - TRIPLE GLAZED GL2 - VISION GLASS - TRIPLE GLAZED (PLANAR) GL3 - VISION GLASS - TRIPLE GLAZED GL4 - SPANDREL GLASS - DOUBLE GLAZED (WHITE) GL5 - SPANDREL GLASS - DOUBLE GLAZED (CHARCOAL) GL6 - VISION GLASS - DOUBLE GLAZED (STRUCTURAL GLASS) GL7 - VISION GLASS - DOUBLE GLAZED (STRUCTURAL GLASS) GL8 - GLASS FINS (STRUCTURAL GLASS SUPPORT) GL9 - FLY-BY VISION GLASS - SINGLE GLAZED GL10 - GLASS FINS (STRUCTURAL GLASS SUPPORT)	<b>D - DOORS (CONTINUED)</b> D1 - AUTOMATIC SLIDING DOOR IN PORTAL D2 - WOOD SWING DOOR D3 - COMMERCIAL ENTRANCE DOOR WITHOUT PORTAL D4 - STAINLESS STEEL DOORS AND FRAMES D5 - COMMERCIAL ENTRANCE DOOR IN PORTAL	<b>SLO - SKYLIGHT</b> SL1 - FIRE RATED WALKABLE SKYLIGHT SL2 - WALKABLE GLASS SL3 - STRUCTURAL GLASS SKYLIGHT
<b>MP - METAL SPANDREL</b> MP1 - METAL PANEL SPANDREL (WHITE) MP2 - METAL PANEL SPANDREL (CHARCOAL) MP3 - STAINLESS STEEL SPANDREL	<b>DO - DOORS (CONTINUED)</b> D6 - COMMERCIAL ENTRANCE DOOR WITHOUT PORTAL D7 - WOOD SWING DOOR D8 - COMMERCIAL ENTRANCE DOOR WITHOUT PORTAL	<b>V - VENTS</b> V1 - LINEAR VENT FOR MECHANICAL TERMINATION V2 - LINEAR VENT FOR MECHANICAL TERMINATION	<b>R - ROOF</b> R1 - INVERTED UNIT PAVEMENT ROOF R2 - INVERTED BALLAST ROOF R3 - INVERTED INTENSIVE GREEN ROOF R4 - INVERTED INTENSIVE GREEN ROOF R5 - INVERTED SAND SET UNIT PAVEMENT ROOF R6 - INVERTED SAND SET UNIT PAVEMENT ROOF R7 - INVERTED SAND SET UNIT PAVEMENT ROOF R8 - INVERTED SAND SET UNIT PAVEMENT ROOF R9 - INVERTED SAND SET UNIT PAVEMENT ROOF R10 - INVERTED SAND SET UNIT PAVEMENT ROOF R11 - INVERTED SAND SET UNIT PAVEMENT ROOF R12 - CONVENTIONAL EXTENSIVE GREEN ROOF R13 - CONVENTIONAL INTENSIVE GREEN ROOF
<b>GL - GLASS</b> GL1 - VISION GLASS - TRIPLE GLAZED GL2 - VISION GLASS - TRIPLE GLAZED (PLANAR) GL3 - VISION GLASS - TRIPLE GLAZED	<b>DO - DOORS</b> D4 - STAINLESS STEEL DOORS AND FRAMES D5 - COMMERCIAL ENTRANCE DOOR IN PORTAL	<b>L - LOUVERS</b> L1 - LOUVER IN CURTAIN WALL L2 - STAINLESS STEEL LOUVER IN STAINLESS STEEL HOLLOW METAL FRAME L3 - LOUVER SCREEN	<b>S - SOFFITS</b> S1 - TITANIUM COATED STAINLESS STEEL METAL SOFFIT S2 - TITANIUM COATED STAINLESS STEEL METAL SOFFIT
<b>GR - GUARDRAILS</b> GR1 - CANTILEVERED GLASS GUARD GR2 - SIDE MOUNTED GLASS GUARD	<b>C - CANOPIES</b> C1 - GLASS & STEEL CANOPY w/STAND-OFF CONNECTIONS C2 - GLASS & STEEL CANOPY w/STAND-OFF CONNECTIONS		

PROJECT

**OAKRIDGE**  
650 W 41st Avenue, Vancouver, BC V5Z 2M9

CLIENT  
**westbank** **QuadReal**

KEY PLAN

REVISIONS		
NO.	DESCRIPTION	DATE
2	ISSUED FOR DEVELOPMENT PERMIT 2019	19 AUG 2019
1	ISSUED FOR DEVELOPMENT PERMIT 3 DESIGN DEVELOPMENT PROGRESS	31 JULY 2019

DRAWING STATUS  
**NOT FOR CONSTRUCTION**

Discrepancies must be reported immediately to the Architect before proceeding. Only figured dimensions are to be used. Contractors must check all dimensions on site. This drawing is protected by copyright.

ALL DIMENSIONS ARE SHOWN IN METRIC.

SEAL

NORTH ARROW

DRAWING TITLE  
**BUILDING ELEVATIONS**

DRAWN Author  
CHECKED Checker

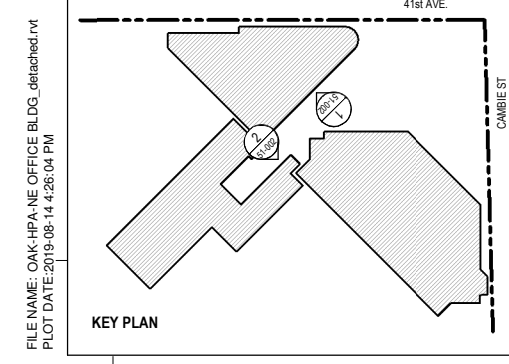
SCALE As indicated  
DATE 07/26/19

GRAPHIC SCALE  
SCALE IN METERS

PROJECT NO. **1109**

BUILDING **TP** PHASE **1N**

DRAWING AUTHOR **AH** DRAWING NO. **51-002** REV NO. **2.**



FILE NAME: OAK-HPA-PANE-OFFICE-BLDG\_detailed.rvt  
PLOT DATE: 2019-08-14 2:25:04 PM