

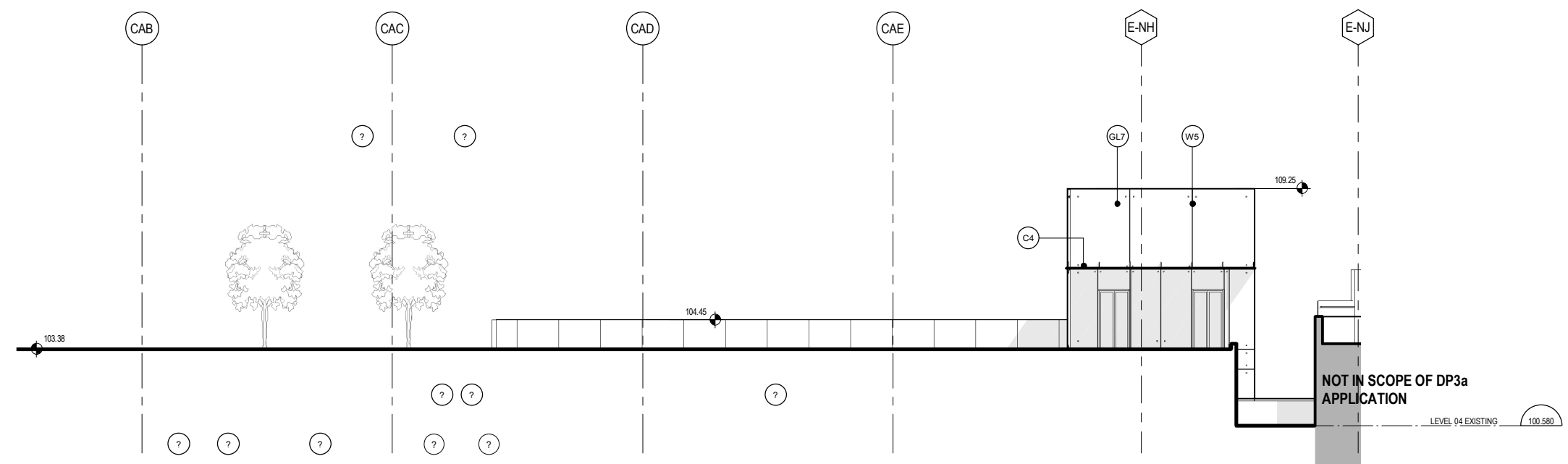
**PROJECT**



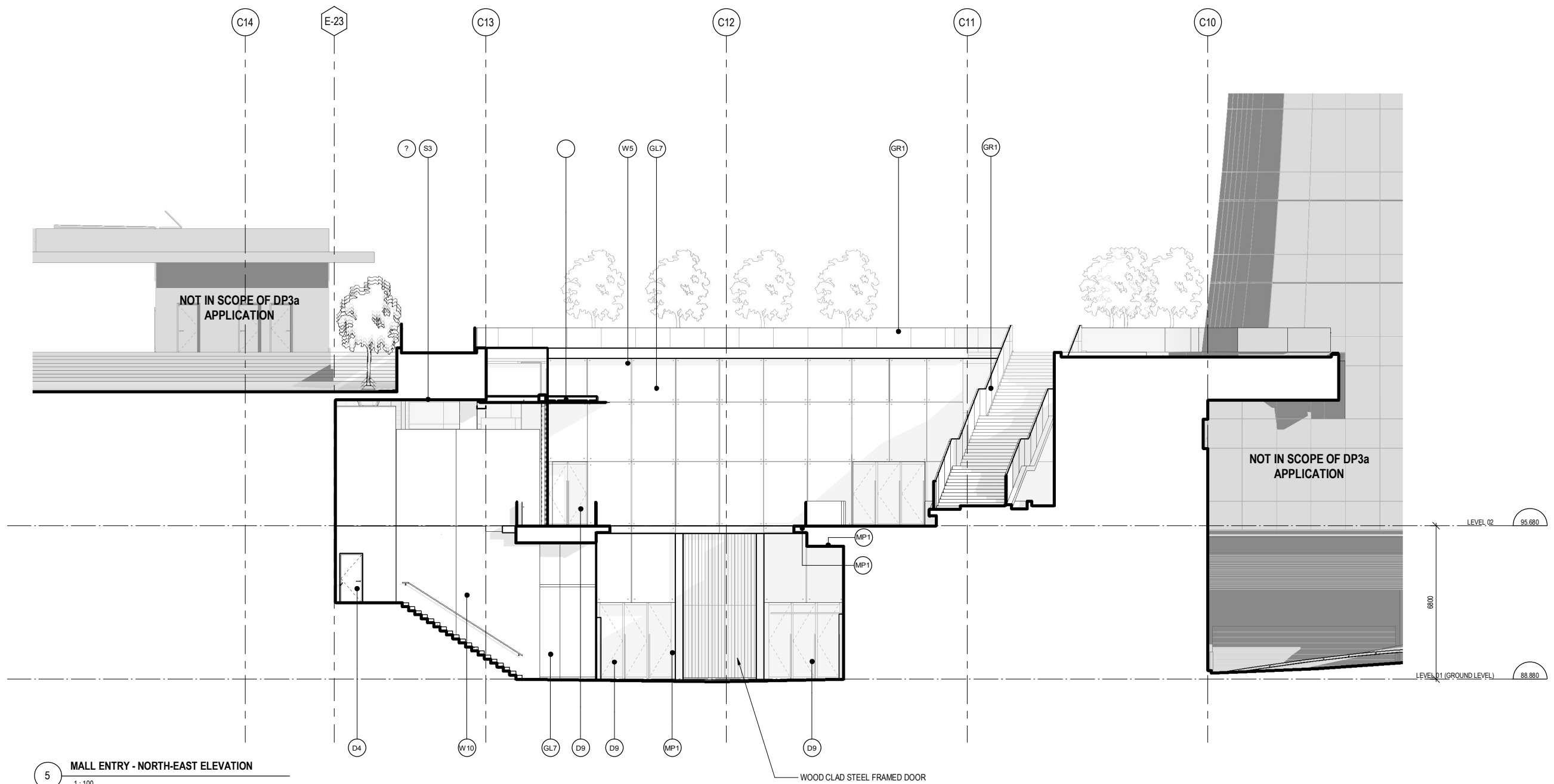
**OAKRIDGE**  
 650 W 41st Avenue, Vancouver, BC V5Z 2M9

**CLIENT**  
 westbank QuadReal

**KEY PLAN**

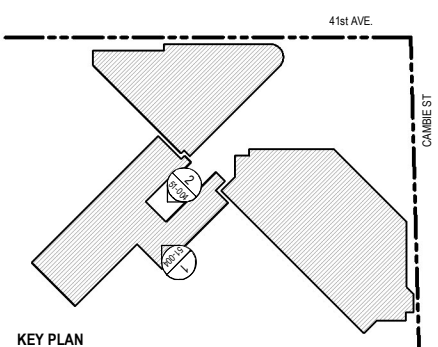
**1 MALL ENTRY - SOUTH-EAST ELEVATION (BREEZEWAY)**  
 1:100



**5 MALL ENTRY - NORTH-EAST ELEVATION**  
 1:100

MATERIAL LEGEND			
<b>W1 - WALLS</b> W2 - UNITIZED CURTAIN WALL - 4 SIDED SSG W3 - UNITIZED CURTAIN WALL - 4 SIDED SSG (PLANAR) W5 - STRUCTURAL GLASS w/ FINS - FIXED CONNECTIONS W6a - STRUCTURAL GLASS - BASE LOADED W6b - STRUCTURAL GLASS w/ FINS - BASE LOADED W7a - PAINTED METAL PANEL W7b - TITANIUM COATED STAINLESS STEEL METAL PANEL W9 - METAL PANEL W10 - ARCHITECTURAL CONCRETE	<b>GL - GLASS (CONTINUED)</b> GL5 - SPANDREL GLASS - DOUBLE GLAZED (WHITE) GL6 - SPANDREL GLASS - DOUBLE GLAZED (CHARCOAL) GL7 - VISION GLASS - DOUBLE GLAZED (STRUCTURAL GLASS) GL8 - GLASS FINS (STRUCTURAL GLASS SUPPORT) GL10 - FLY-BY VISION GLASS - SINGLE GLAZED	<b>D9 - DOORS (CONTINUED)</b> D6 - AUTOMATIC SLIDING DOOR IN PORTAL D7 - WOOD SPRING DOOR D9 - COMMERCIAL ENTRANCE DOOR WITHOUT PORTAL	<b>S1 - SKYLIGHT</b> SL1a - FIRE RATED WALKABLE SKYLIGHT SL1b - WALKABLE GLASS SL2 - STRUCTURAL GLASS SKYLIGHT
<b>GL4 - GLASS</b> GL1 - VISION GLASS - TRIPLE GLAZED GL2 - VISION GLASS - TRIPLE GLAZED GL3 - VISION GLASS - TRIPLE GLAZED (PLANAR)	<b>MP1 - METAL SPANDREL</b> MP1 - METAL PANEL SPANDREL (WHITE) MP2 - METAL PANEL SPANDREL (CHARCOAL) MP3 - STAINLESS STEEL SPANDREL	<b>D1 - DOORS</b> D4 - STAINLESS STEEL DOORS AND FRAMES D5 - COMMERCIAL ENTRANCE DOOR IN PORTAL	<b>RR - ROOF</b> R1 - INVERTED UNIT PAVEMENT ROOF R4 - INVERTED BALLAST ROOF R6a - INVERTED INTENSIVE GREEN ROOF R6b - INVERTED INTENSIVE GREEN ROOF R9a - INVERTED SAND SET UNIT PAVEMENT ROOF R9c - INVERTED SAND SET UNIT PAVEMENT ROOF R11 - INVERTED EXTENSIVE GREEN ROOF R12 - CONVENTIONAL EXTENSIVE GREEN ROOF R13 - CONVENTIONAL INTENSIVE GREEN ROOF
<b>GL8 - GLASS (CONTINUED)</b> GL9 - SPANDREL GLASS - DOUBLE GLAZED (CHARCOAL) GL10 - FLY-BY VISION GLASS - SINGLE GLAZED	<b>DR1 - DOORS</b> DR1 - COMMERCIAL ENTRANCE DOOR WITHOUT PORTAL	<b>VL - VENTS</b> V2 - LINEAR VENT FOR MECHANICAL TERMINATION	<b>SO - SOFFITS</b> S3 - TITANIUM COATED STAINLESS STEEL METAL SOFFIT
<b>GL7 - GLASS</b> GL7 - VISION GLASS - DOUBLE GLAZED (STRUCTURAL GLASS)	<b>DR2 - DOORS</b> DR2 - COMMERCIAL ENTRANCE DOOR WITH PORTAL	<b>LV - LOUVERS</b> L1 - LOUVER IN CURTAIN WALL L2 - STAINLESS STEEL LOUVER IN STAINLESS STEEL L3 - LOUVER SCREEN	<b>GR - GUARDRAILS</b> GR1 - CANTILEVERED GLASS GUARD GR2 - SIDE MOUNTED GLASS GUARD
<b>GL10 - GLASS</b> GL10 - FLY-BY VISION GLASS - SINGLE GLAZED	<b>DR3 - DOORS</b> DR3 - COMMERCIAL ENTRANCE DOOR WITH PORTAL	<b>LV2 - LOUVERS</b> LV2 - LINEAR VENT FOR MECHANICAL TERMINATION	<b>C2 - CANOPIES</b> C3 - GLASS & STEEL CANOPY w/ STAND-OFF CONNECTIONS C4 - GLASS & STEEL CANOPY w/ STAND-OFF CONNECTIONS

HATCH LEGEND	
[White Box]	NOT INCLUDED IN SCOPE OF DP3a APPLICATION
[Grey Box]	REFER TO ADAMSON ASSOCIATES ARCHITECTS' 100% DESIGN DEVELOPMENT - POOL/UM



REVISIONS		
2	ISSUED FOR DEVELOPMENT PERMIT 3	19 AUG 2019
1	ISSUED FOR DEVELOPMENT PERMIT 3	31 JULY 2019
No.	DESCRIPTION	DATE

**DRAWING STATUS**  
**NOT FOR CONSTRUCTION**

Discrepancies must be reported immediately to the Architect before proceeding. Only figured dimensions are to be used. Contractors must check all dimensions on site. This drawing is protected by copyright.

ALL DIMENSIONS ARE SHOWN IN METRIC.

**HENRIQUEZ** Henriquez Partners Architects  
 598 W Georgia Street  
 Vancouver BC, Canada V6B 2A3  
 T 604 687 5681

SEAL: [Blank] NORTH ARROW: [Blank]

**DRAWING TITLE**  
**BUILDING ELEVATIONS**

<b>DRAWN</b> Author	<b>CHECKED</b> Checker
<b>SCALE</b> As indicated	<b>DATE</b> 07/26/19
<b>GRAPHIC SCALE</b> SCALE IN METERS	

**PROJECT NO.** 1109

**BUILDING** TP **PHASE** 1N

<b>DRAWING AUTHOR</b> AH	<b>DRAWING NO.</b> 51-004	<b>REV NO.</b> 2
-----------------------------	------------------------------	---------------------