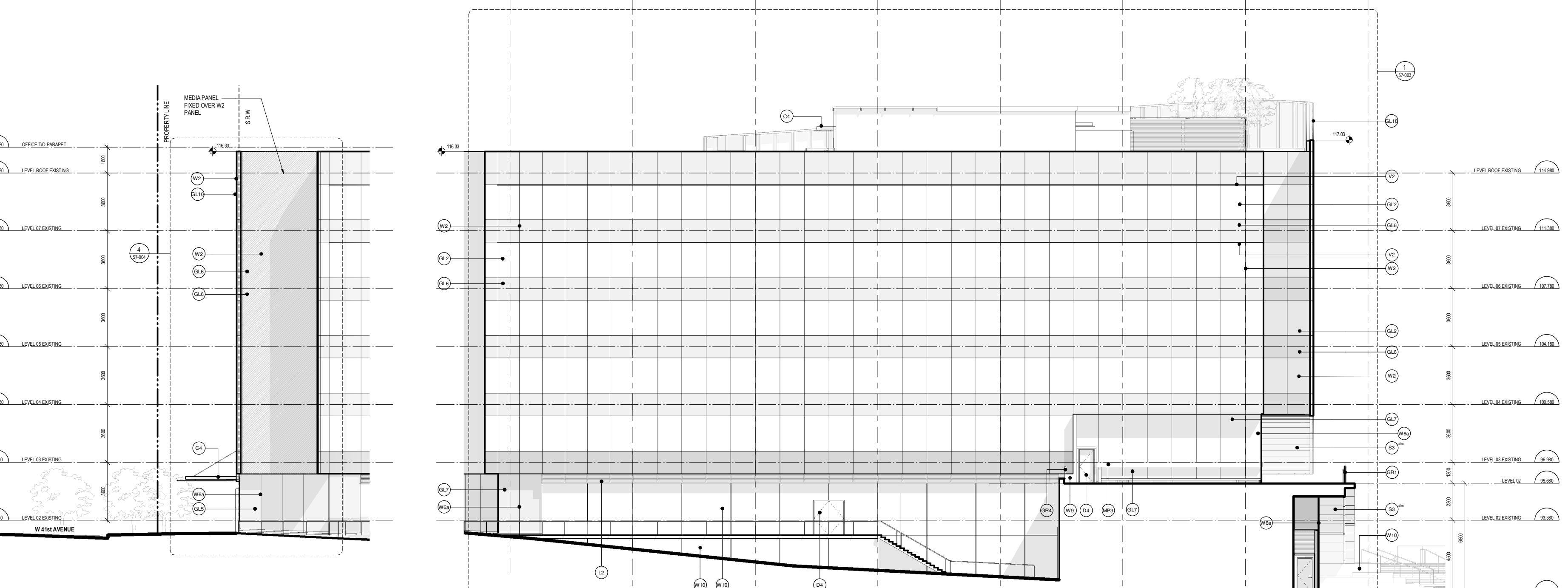
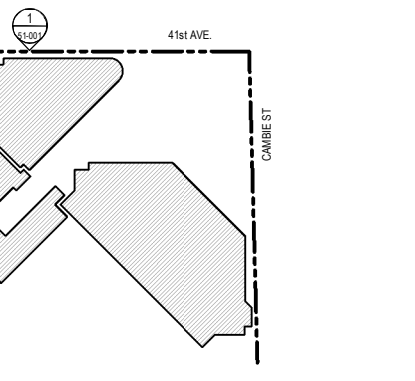


1 EXISTING NE OFFICE - NORTH ELEVATION
1:100



2 EXISTING NE OFFICE - WEST ELEVATION
1:100

3 EXISTING NE OFFICE - SOUTH-WEST ELEVATION
1:100



MATERIAL LEGEND

<p>W2 - WALLS</p> <ul style="list-style-type: none"> W2 - UNITIZED CURTAIN WALL - 4 SIDED SSG W3 - UNITIZED CURTAIN WALL - 4 SIDED SSG (PLANAR) W5 - STRUCTURAL GLASS w/ FINS - FIXED CONNECTIONS W6a - STRUCTURAL GLASS - BASE LOADED W6b - STRUCTURAL GLASS w/ FINS - BASE LOADED W7a - PAINTED METAL PANEL W7b - TITANIUM COATED STAINLESS STEEL METAL PANEL W9 - METAL PANEL W10 - ARCHITECTURAL CONCRETE <p>GL-GLASS</p> <ul style="list-style-type: none"> GL-1 - VISION GLASS - TRIPLE GLAZED GL-2 - VISION GLASS - TRIPLE GLAZED GL-3 - VISION GLASS - TRIPLE GLAZED (PLANAR) 	<p>GL-GLASS (CONTINUED)</p> <ul style="list-style-type: none"> GL-4 - SPANDREL GLASS - DOUBLE GLAZED (WHITE) GL-5 - SPANDREL GLASS - DOUBLE GLAZED (CHARCOAL) GL-7 - VISION GLASS - DOUBLE GLAZED (STRUCTURAL GLASS) GL-8 - GLASS FIN (STRUCTURAL GLASS SUPPORT) GL-10 - FLY-BY VISION GLASS - SINGLE GLAZED <p>MP- METAL SPANDREL</p> <ul style="list-style-type: none"> MP-1 - METAL PANEL SPANDREL (WHITE) MP-2 - METAL PANEL SPANDREL (CHARCOAL) MP-3 - STAINLESS STEEL SPANDREL <p>DR - DOORS</p> <ul style="list-style-type: none"> D4 - STAINLESS STEEL DOORS AND FRAMES D5 - COMMERCIAL ENTRANCE DOOR IN PORTAL 	<p>DO - DOORS (CONTINUED)</p> <ul style="list-style-type: none"> D6 - AUTOMATIC SLIDING DOOR IN PORTAL D7 - WOOD SWING DOOR D9 - COMMERCIAL ENTRANCE DOOR WITHOUT PORTAL <p>VB - VENTS</p> <ul style="list-style-type: none"> V2 - LINEAR VENT FOR MECHANICAL TERMINATION <p>LG - LOUVERES</p> <ul style="list-style-type: none"> L1 - LOUVERE IN CURTAIN WALL L2 - STAINLESS STEEL LOUVER IN STAINLESS STEEL L3 - LOUVER SCREEN 	<p>SL - SKYLIGHT</p> <ul style="list-style-type: none"> SL1a - FIRE RATED WALKABLE SKYLIGHT SL1b - WALKABLE GLASS SL2 - STRUCTURAL GLASS SKYLIGHT <p>R0 - ROOF</p> <ul style="list-style-type: none"> R1 - INVERTED UNIT PAVEMENT ROOF R4 - INVERTED BALLAST ROOF R6a - INVERTED INTENSIVE GREEN ROOF R6b - INVERTED INTENSIVE GREEN ROOF R9a - INVERTED SAND SET UNIT PAVEMENT ROOF R9b - INVERTED SAND SET UNIT PAVEMENT ROOF R11 - INVERTED EXTENSIVE GREEN ROOF R12 - CONVENTIONAL EXTENSIVE GREEN ROOF R13 - CONVENTIONAL INTENSIVE GREEN ROOF <p>SO - SOFFITS</p> <ul style="list-style-type: none"> S3 - TITANIUM COATED STAINLESS STEEL METAL SOFFIT <p>GG - GUARDRAILS</p> <ul style="list-style-type: none"> GR1 - CANTILEVERED GLASS GUARD GR4 - SIDE MOUNTED GLASS GUARD <p>CG - CANOPIES</p> <ul style="list-style-type: none"> C3 - GLASS & STEEL CANOPY w/ STAND-OFF CONNECTIONS C4 - GLASS & STEEL CANOPY w/ STAND-OFF CONNECTIONS
---	--	--	--

HATCH LEGEND

[Hatched Box]	NOT INCLUDED IN SCOPE OF DP&A APPLICATION
[Solid Box]	REFER TO ADAMSON ASSOCIATES ARCHITECTS' 100% DESIGN DEVELOPMENT - PODIUM

REVISIONS

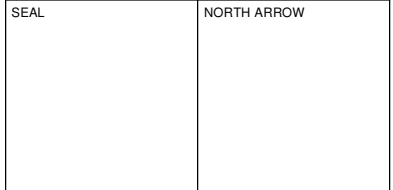
NO.	DESCRIPTION	DATE
2	ISSUED FOR DEVELOPMENT PERMIT 2019	19 AUG 2019
1	ISSUED FOR DEVELOPMENT PERMIT 3 DESIGN DEVELOPMENT PROGRESS	31 JULY 2019

DRAWING STATUS
NOT FOR CONSTRUCTION

Discrepancies must be reported immediately to the Architect before proceeding. Only figured dimensions are to be used. Contractors must check all dimensions on site. This drawing is protected by copyright.

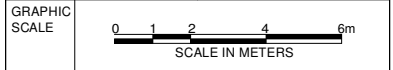
ALL DIMENSIONS ARE SHOWN IN METRIC.

HENRIQUEZ Henriquez Partners Architects
598 W Georgia Street
Vancouver BC, Canada V5B 2A3
T 604 687 5681



DRAWING TITLE
BUILDING ELEVATIONS

DRAWN	Author	CHECKED	Checker
SCALE	As indicated	DATE	07/26/19



PROJECT NO. **1109**

BUILDING **TP** PHASE **1N**

DRAWING AUTHOR **AH** DRAWING NO. **51-001** REV NO. **2.**