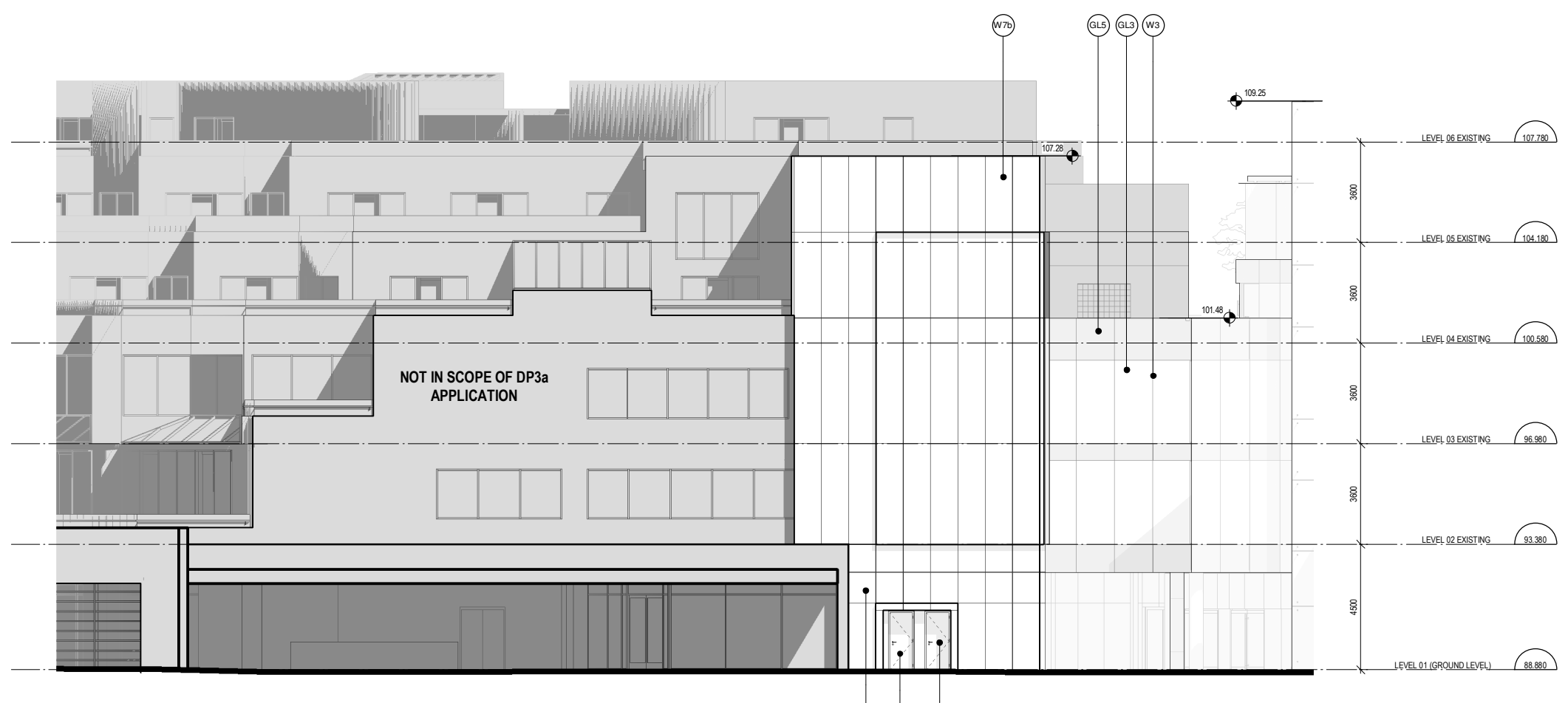
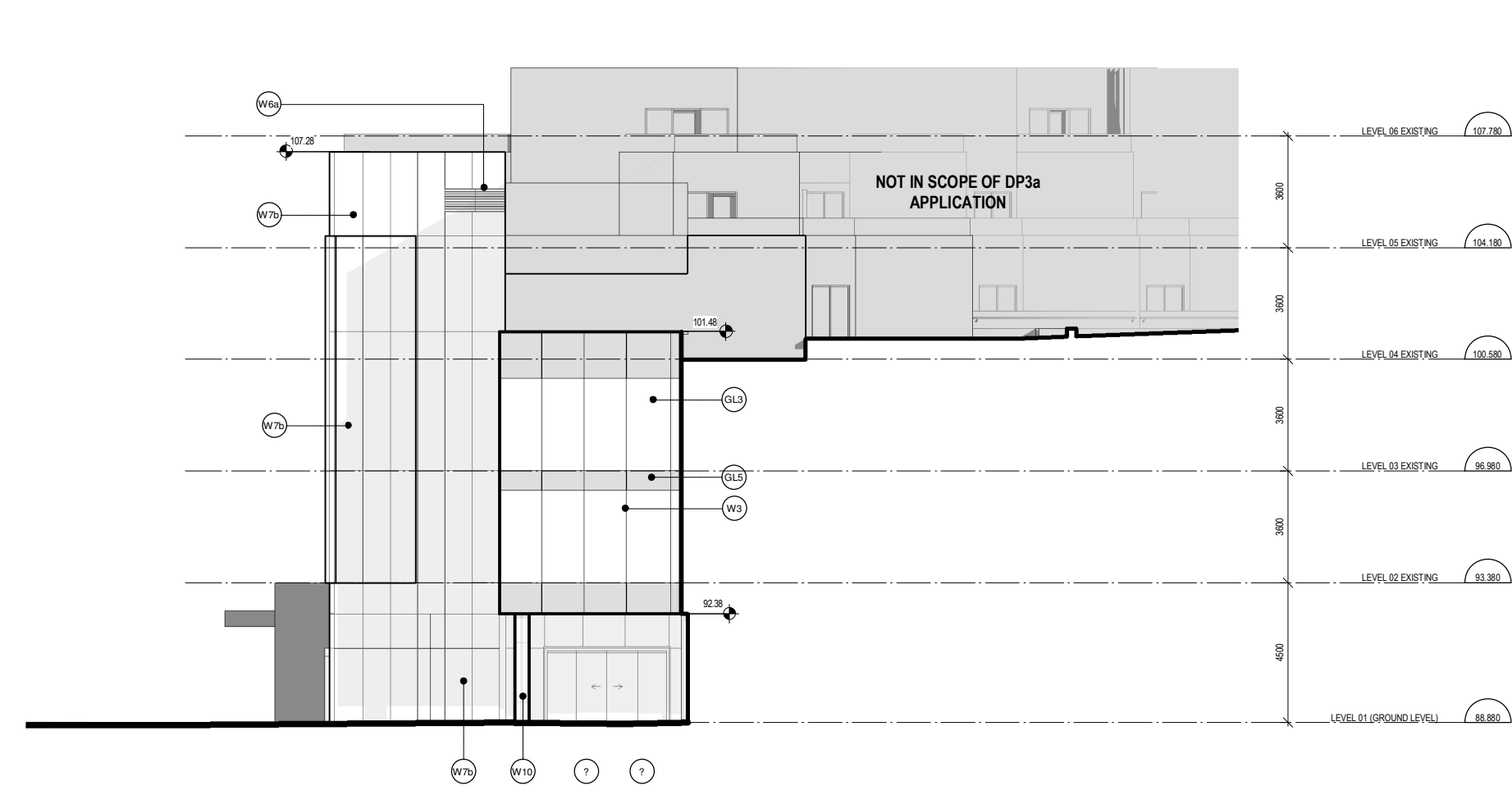


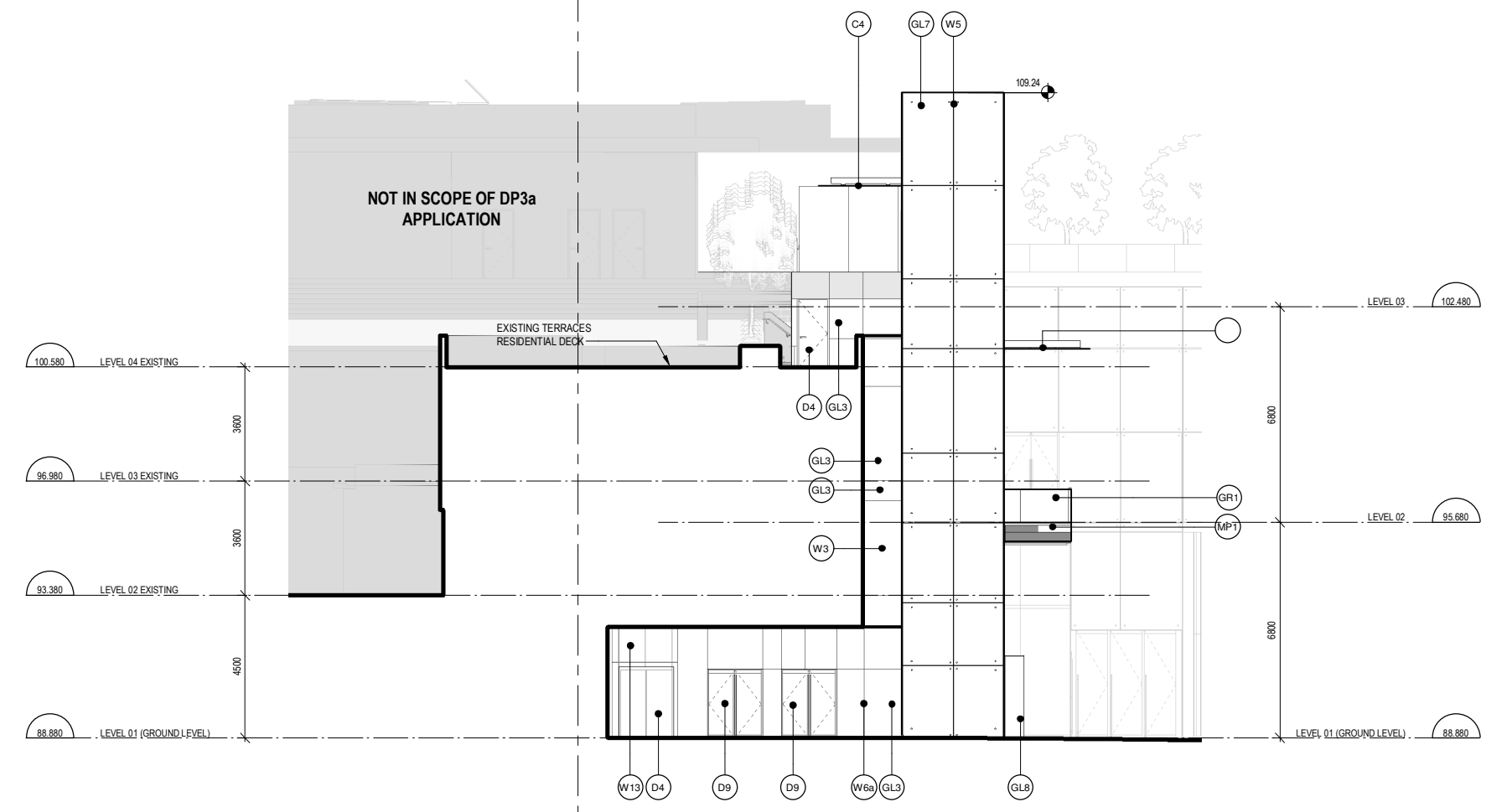
1 EXISTING TERRACES - EAST ELEVATION
 1:100



2 EXISTING TERRACES - NORTH ELEVATION
 1:100



3 EXISTING TERRACES - WEST ELEVATION
 1:100



4 TRANSIT PLAZA - NORTH-EAST ELEVATION
 1:100

NO.	DESCRIPTION	DATE
2	ISSUED FOR DEVELOPMENT PERMIT 2019	19 AUG 2019
1	ISSUED FOR DEVELOPMENT PERMIT 3 DESIGN DEVELOPMENT PROGRESS	31 JULY 2019
1	DESIGN DEVELOPMENT PROGRESS	2019

NO.	DESCRIPTION	DATE
2	ISSUED FOR DEVELOPMENT PERMIT 2019	19 AUG 2019
1	ISSUED FOR DEVELOPMENT PERMIT 3 DESIGN DEVELOPMENT PROGRESS	31 JULY 2019
1	DESIGN DEVELOPMENT PROGRESS	2019

DRAWING STATUS
NOT FOR CONSTRUCTION

Discrepancies must be reported immediately to the Architect before proceeding. Only figured dimensions are to be used. Contractors must check all dimensions on site. This drawing is protected by copyright.

ALL DIMENSIONS ARE SHOWN IN METRIC.

HENRIQUEZ Henriquez Partners Architects
 598 W Georgia Street
 Vancouver BC, Canada V6B 2A3
 T 604 687 5681

SEAL NORTH ARROW

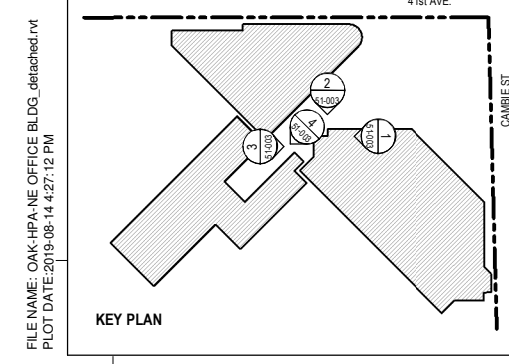
DRAWING TITLE
BUILDING ELEVATIONS

DRAWN Author CHECKED Checker
 SCALE As indicated DATE 07/26/19

GRAPHIC SCALE
 0 2 4 6m
 SCALE IN METERS

PROJECT NO. **1109**
 BUILDING **TP** PHASE **1N**

DRAWING NO. **AH 51-003** REV NO. **2**



HATCH LEGEND

[Light Grey Box]	NOT INCLUDED IN SCOPE OF DP3a APPLICATION
[Dark Grey Box]	REFER TO ADAMSON ASSOCIATES ARCHITECTS '100% DESIGN DEVELOPMENT - POOL/MP'

MATERIAL LEGEND

<p>W1 - WALLS</p> <ul style="list-style-type: none"> W2 - UNITIZED CURTAIN WALL - 4 SIDED SSG W3 - UNITIZED CURTAIN WALL - 4 SIDED SSG (PLANAR) W5 - STRUCTURAL GLASS W/ FINS - FIXED CONNECTIONS W6 - STRUCTURAL GLASS - BASE LOADED W8 - STRUCTURAL GLASS W/FINS - BASE LOADED W9 - PAINTED METAL PANEL W70 - TITANIUM COATED STAINLESS STEEL METAL PANEL W9 - METAL PANEL W10 - ARCHITECTURAL CONCRETE <p>GL0 - GLASS</p> <ul style="list-style-type: none"> GL1 - VISION GLASS - TRIPLE GLAZED GL2 - VISION GLASS - TRIPLE GLAZED GL3 - VISION GLASS - TRIPLE GLAZED (PLANAR) 	<p>GL0 - GLASS (CONTINUED)</p> <ul style="list-style-type: none"> GL5 - SPANDREL GLASS - DOUBLE GLAZED (WHITE) GL6 - SPANDREL GLASS - DOUBLE GLAZED (CHARCOAL) GL7 - VISION GLASS - DOUBLE GLAZED (STRUCTURAL GLASS) GL8 - GLASS FINS (STRUCTURAL GLASS SUPPORT) GL10 - FLY-BY VISION GLASS - SINGLE GLAZED <p>MP0 - METAL SPANDREL</p> <ul style="list-style-type: none"> MP1 - METAL PANEL SPANDREL (WHITE) MP2 - METAL PANEL SPANDREL (CHARCOAL) MP3 - STAINLESS STEEL SPANDREL <p>DD - DOORS</p> <ul style="list-style-type: none"> D4 - STAINLESS STEEL DOORS AND FRAMES D5 - COMMERCIAL ENTRANCE DOOR IN PORTAL 	<p>DD - DOORS (CONTINUED)</p> <ul style="list-style-type: none"> D6 - AUTOMATIC SLIDING DOOR IN PORTAL D7 - WOOD SWING DOOR D9 - COMMERCIAL ENTRANCE DOOR WITHOUT PORTAL <p>LV - LOUVERES</p> <ul style="list-style-type: none"> LV2 - LINEAR VENT FOR MECHANICAL TERMINATION <p>LV - LOUVERES</p> <ul style="list-style-type: none"> L1 - LOUVRE IN CURTAIN WALL L2 - STAINLESS STEEL LOUVRE IN STAINLESS STEEL HOLLOW METAL FRAME L3 - LOUVRE SCREEN 	<p>SL - SKYLIGHT</p> <ul style="list-style-type: none"> SL4 - FIRE RATED WALKABLE SKYLIGHT SL5 - WALKABLE GLASS SL2 - STRUCTURAL GLASS SKYLIGHT <p>RR - ROOF</p> <ul style="list-style-type: none"> R1 - INVERTED UNIT PAVEMENT ROOF R4 - INVERTED BALLAST ROOF R6a - INVERTED INTENSIVE GREEN ROOF R6b - INVERTED INTENSIVE GREEN ROOF R6c - INVERTED SAND SET UNIT PAVEMENT ROOF R6d - INVERTED SAND SET UNIT PAVEMENT ROOF R11 - INVERTED EXTENSIVE GREEN ROOF R12 - CONVENTIONAL EXTENSIVE GREEN ROOF R13 - CONVENTIONAL INTENSIVE GREEN ROOF 	<p>SR - SOFFITS</p> <ul style="list-style-type: none"> S3 - TITANIUM COATED STAINLESS STEEL METAL SOFFIT <p>GR - GUARDRAILS</p> <ul style="list-style-type: none"> GR1 - CANTILEVERED GLASS GUARD GR4 - SIDE MOUNTED GLASS GUARD <p>CC - CANOPIES</p> <ul style="list-style-type: none"> C3 - GLASS & STEEL CANOPY W/ STAND-OFF CONNECTIONS C4 - GLASS & STEEL CANOPY W/ STAND-OFF CONNECTIONS
---	--	--	---	--