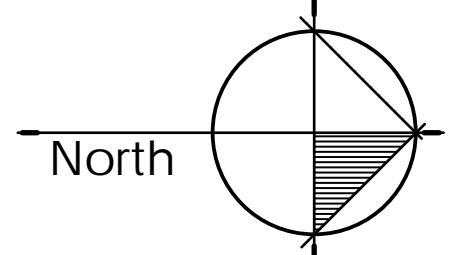
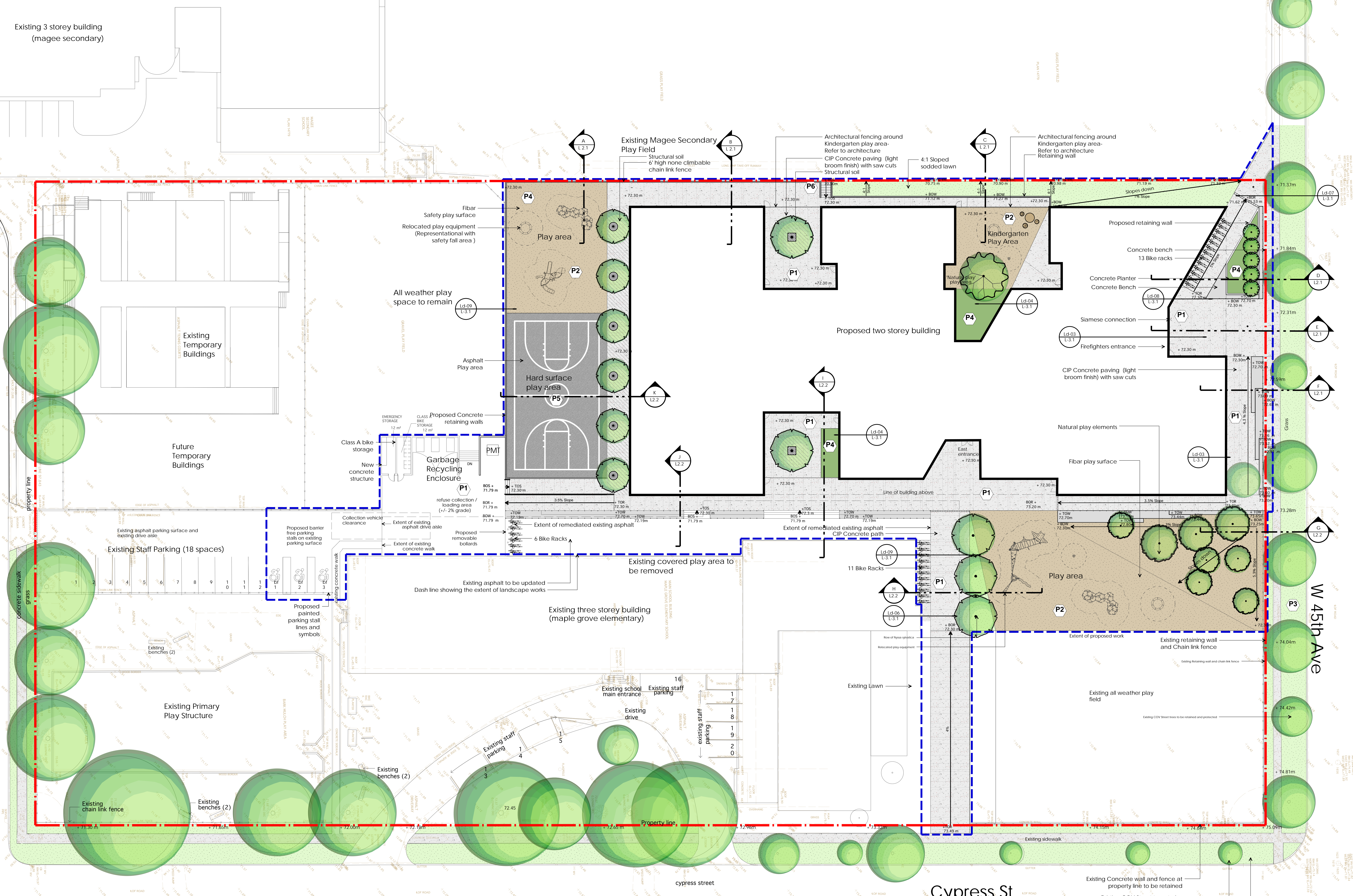


Existing 3 storey building
(magee secondary)



1 Feb. 15-18 Issued for DP
no. | date | item:
Revisions:

DKI Durante Kreuk Ltd.
102 - 1637 West 5th Avenue
Vancouver BC V6J 1N5
t: 604 684 4611
f: 604 684 0577
www.dki.bc.ca

VSBC Vancouver School Board

Project:
Maple Grove Elementary

Drawn by: ROC, DD
Checked by: PK
Date: February 2018
Scale: 1:200
Drawing Title:

Overall Landscape Plan

Project No.:
17056
Sheet No.:

LEGEND	
P1 CIP Concrete Sidewalk (light broom finish with saw cuts as shown)	Play timber table and chairs (In kindergarten play area)
P2 Fibar play surface	Inverted U Bike Racks
P3 Sodded lawn	Trench drain grate
P4 Planting (low maintenance planting)	EXTENT OF WORK
Pg Asphalt	PROPERTY LINE

DRAWINGS LIST	
L-1.1 Overall Landscape plan	1:200
T-1.1 Tree protection plan	1:200
T-1.2 Trees retention and removal plan	1:200
L-1.2 Overall Planting Plan	1:200
L-1.3 NW Planting Plan	1:100
L-2.1 Landscape sections	1:50
L-2.2 Landscape sections	1:50
L-3.1 Landscape Details	As shown