

EXISTING KEY PLAN

PROJECT NAME:
WATERFRONT TOWER

601 W CORDOVA STREET
VANCOUVER, BC

OWNERS:
CADILLAC FAIRVIEW CORPORATION LTD
20 Queen Street West, 5th Floor
Toronto, ON M5H 3R4, Canada

ARCHITECT OF RECORD:
B+H ARCHITECTS
400-1706 West 1st Avenue
Vancouver, BC V6J 0E4

CONSULTANTS:
APLIN & MARTIN
#910 - 1111 W Hastings Street
Vancouver, BC V6E 2J3
PFS STUDIO
1777 W 3rd Avenue
Vancouver, BC V6J 1K7
READ JONES CHRISTOFFERSEN LTD.
Suite 500, 144 Front Street West
Toronto, ON, M5J 2L7

INTEGRAL GROUP
200 Granville St, #180
Vancouver, BC V6C 1S4

SMITH + ANDERSEN FALCON
338-6450 Roberts Street
Burnaby, British Columbia, V5G 4E1

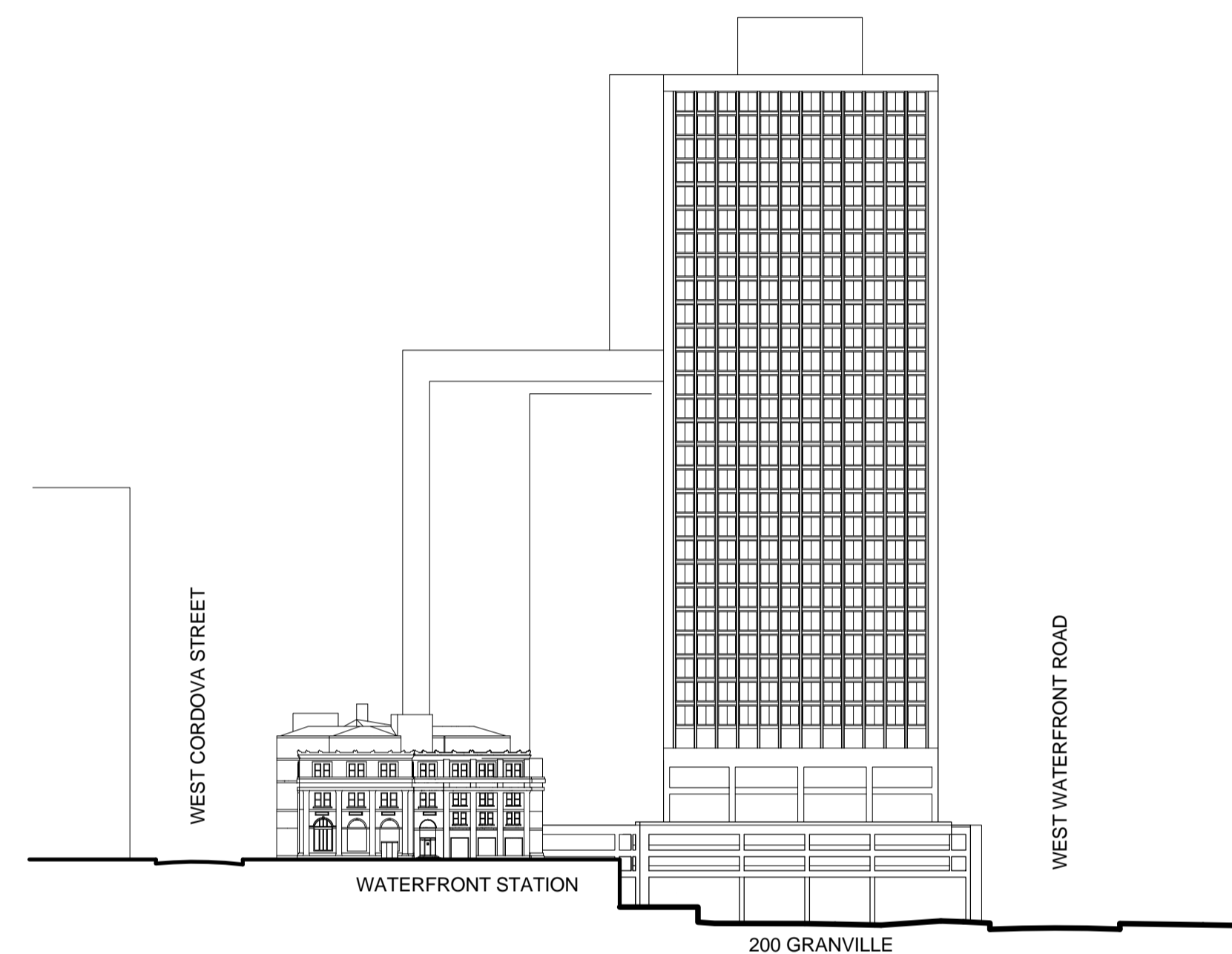
LMDG BUILDING CODE CONSULTANTS LTD
780 Beatty Street, 4th Floor
Vancouver, BC, V6B 2M1

ISSUES:	NO.	DATE
	02	DEVELOPMENT PERMIT - REVISION 1 2014.12.05
	01	DEVELOPMENT PERMIT 2014.11.03

PROJECT #:	212011	DRAWN BY:	Checker
		CHECKED BY:	Approver

SHEET NAME:
STREETSCAPE - EXISTING

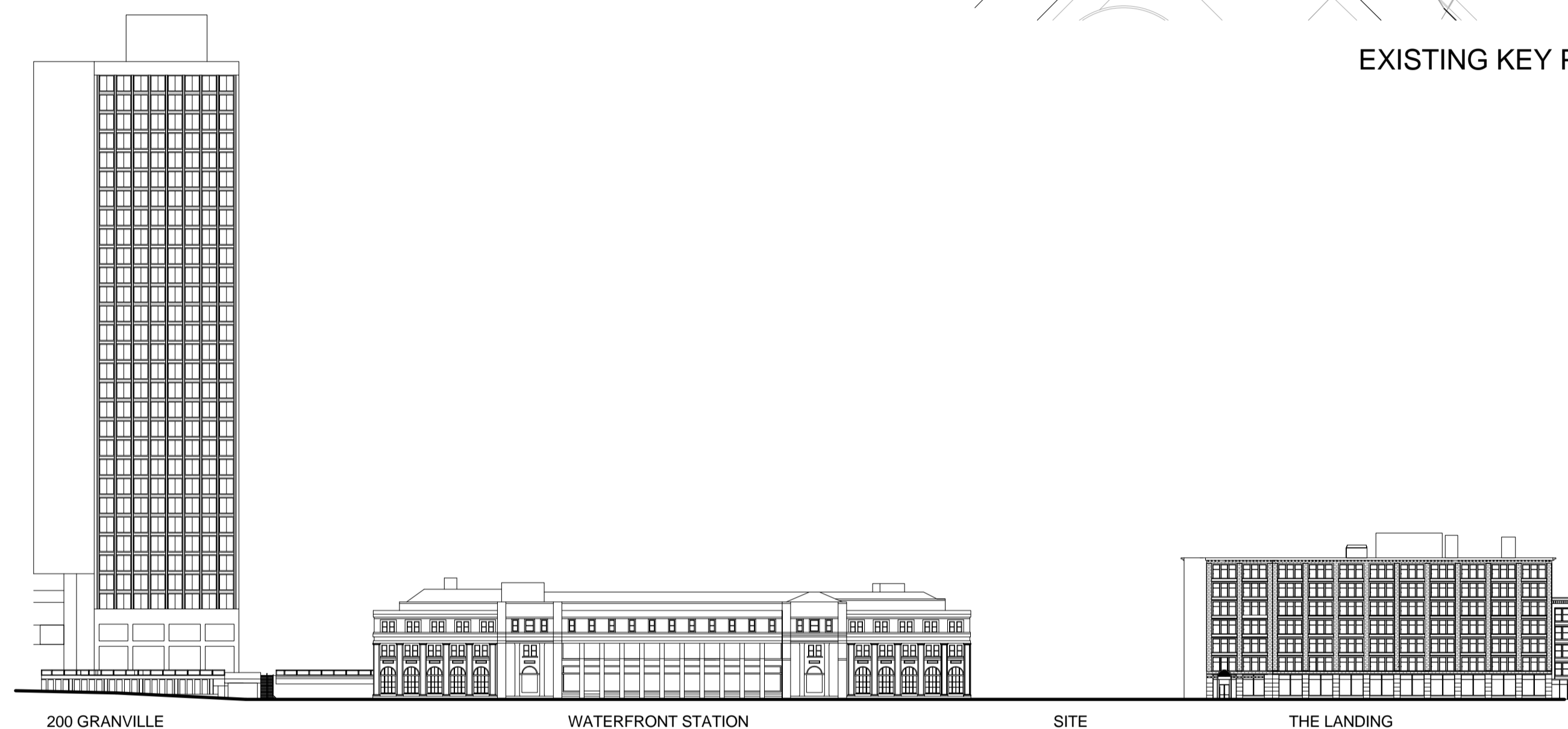
SHEET NUMBER:
A-012.DE



TOWER LOOKING WEST

Scale: NTS
Sheet: A-012.DE

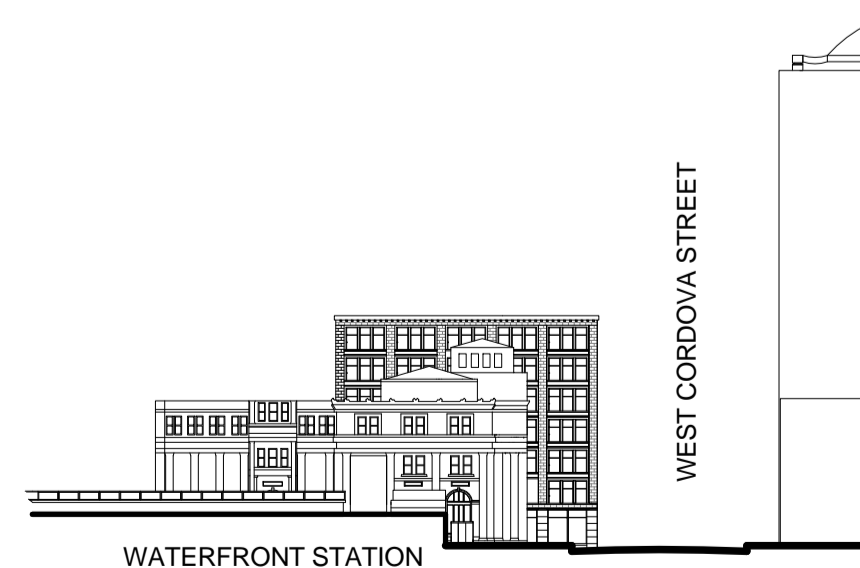
4



CORDOVA STREET ELEVATION

Scale: NTS
Sheet: A-012.DE

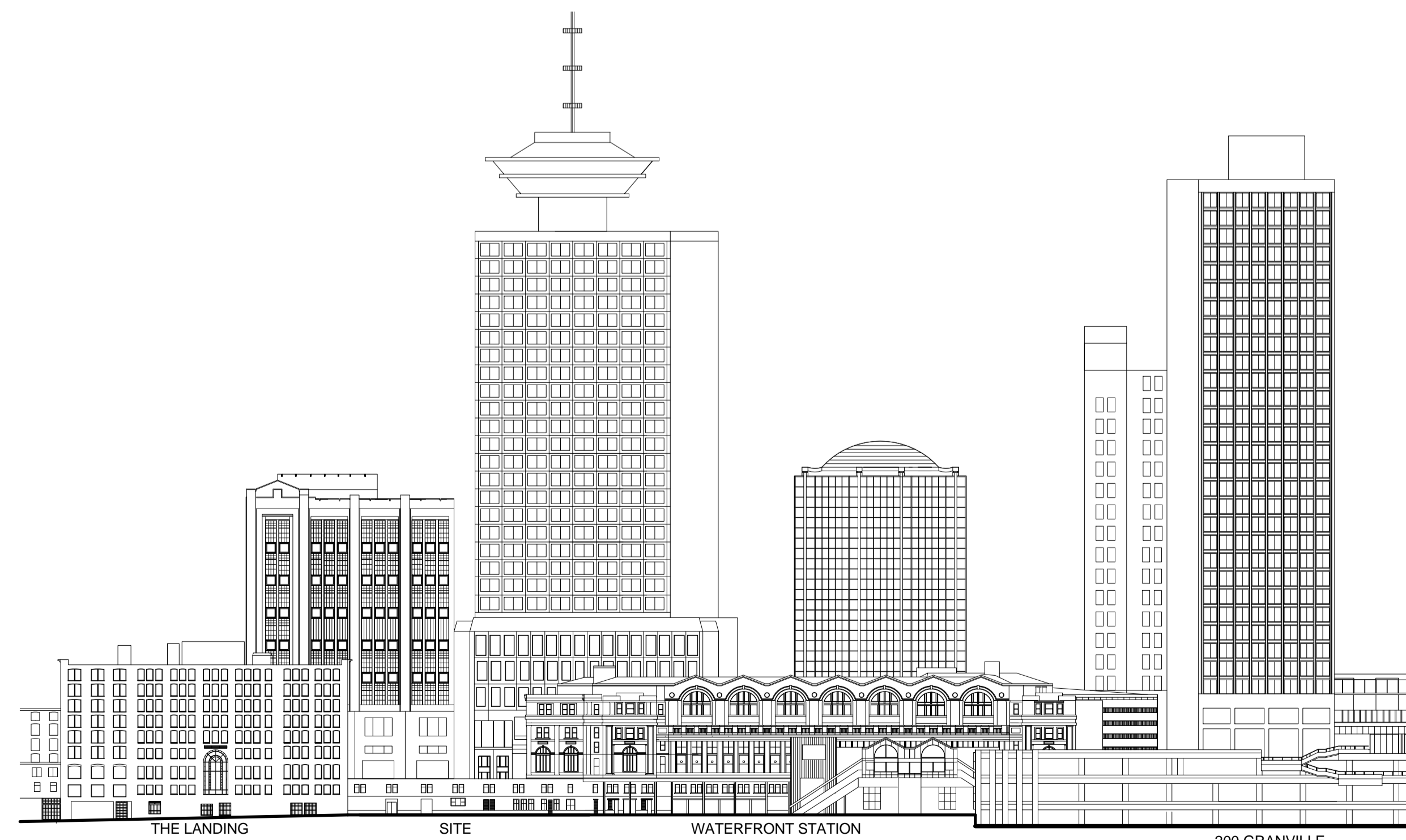
3



TOWER LOOKING EAST

Scale: NTS
Sheet: A-012.DE

2



WEST WATERFRONT ROAD ELEVATION

Scale: NTS
Sheet: A-012.DE

1