

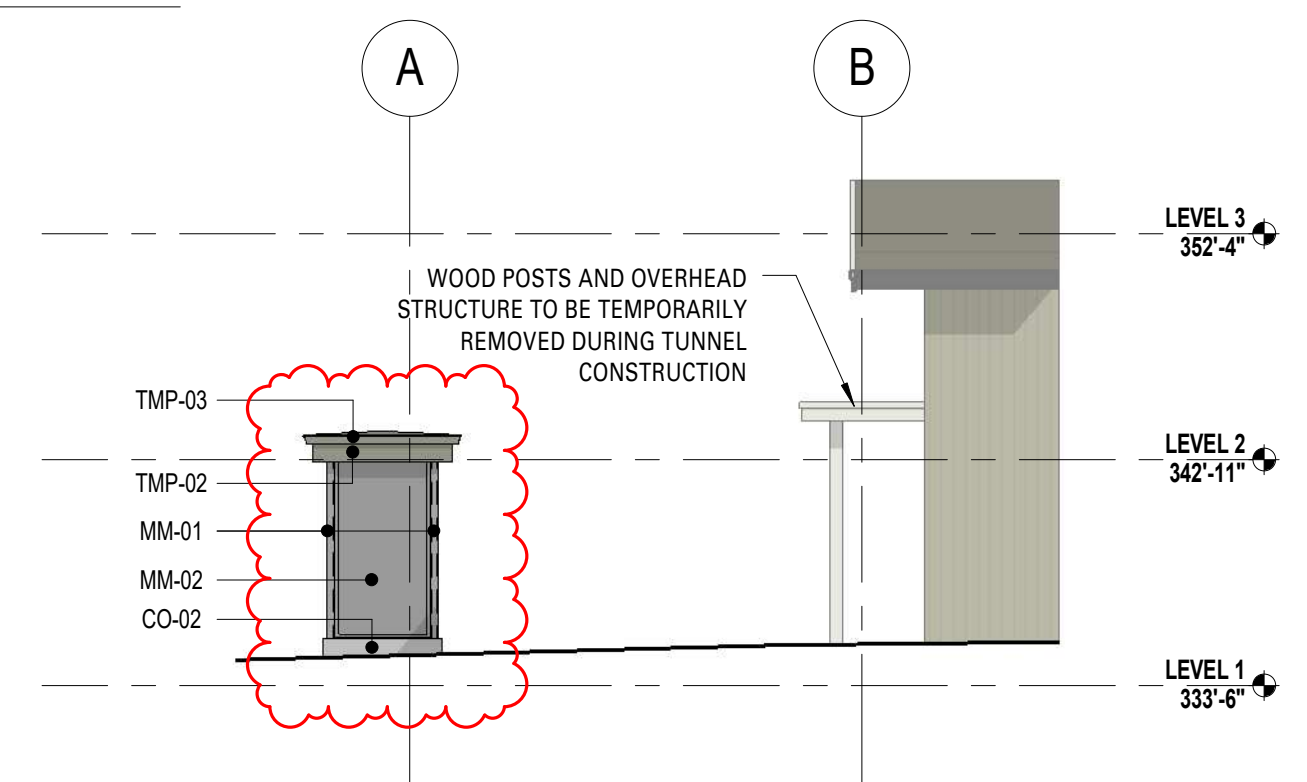
This drawing is an instrument of service and the property of Shift Architecture Inc. and shall remain their property. The use of this drawing shall be restricted to the original site for which it was prepared and publication thereof is expressly limited to such use. Reuse, reproduction or publication by any method in whole or in part is prohibited without their written consent.

No	Date	Revision Notes
0	18/07/27	ISSUED FOR DPMA

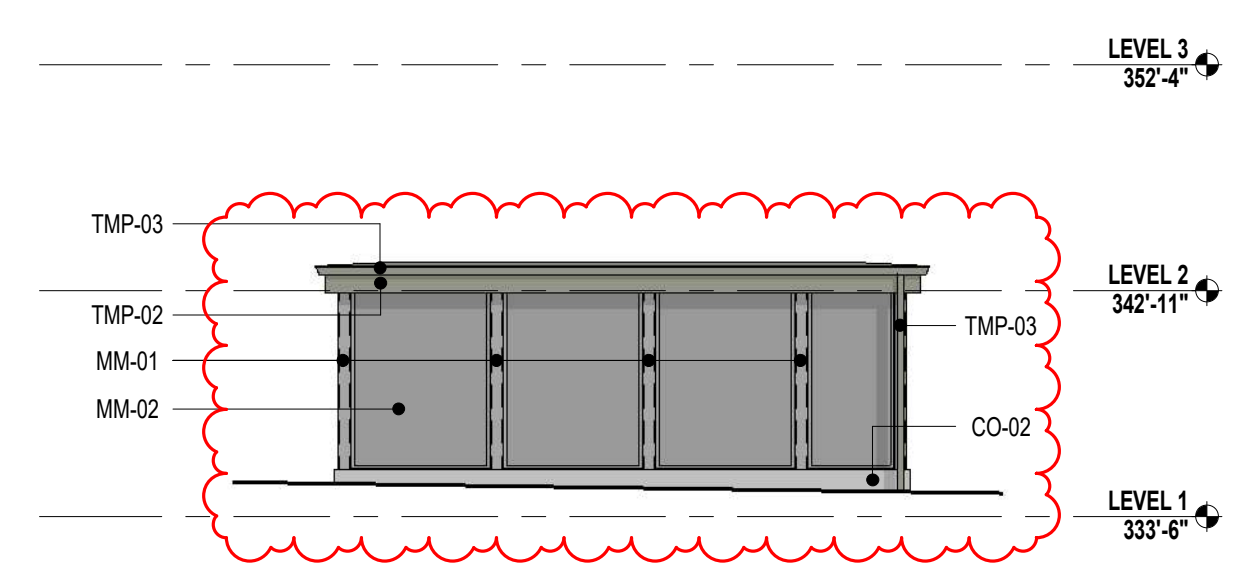
KEY	MATERIALS
CO-02	EXPOSED ARCHITECTURAL CONCRETE - BM 2137-50 "SEA HAZE"
MM-01	4"x6" HSS COLUMNS - GALVANIZED/PAINTED TO MATCH AZKO NOBEL INTERPON POWDER COAT "PEWTER"
MM-02	1"x2" STEEL MESH PANEL - GALVANIZED/PAINTED TO MATCH AZKO NOBEL INTERPON POWDER COAT "PEWTER"
TMP-02	WOOD FASCIA - PAINTED - BM 2140-40 "STORM CLOUD GRAY"
TMP-03	PREFINISHED ALUMINUM GUTTER AND RWL - TO MATCH BM 2140-40 "STORM CLOUD GRAY"



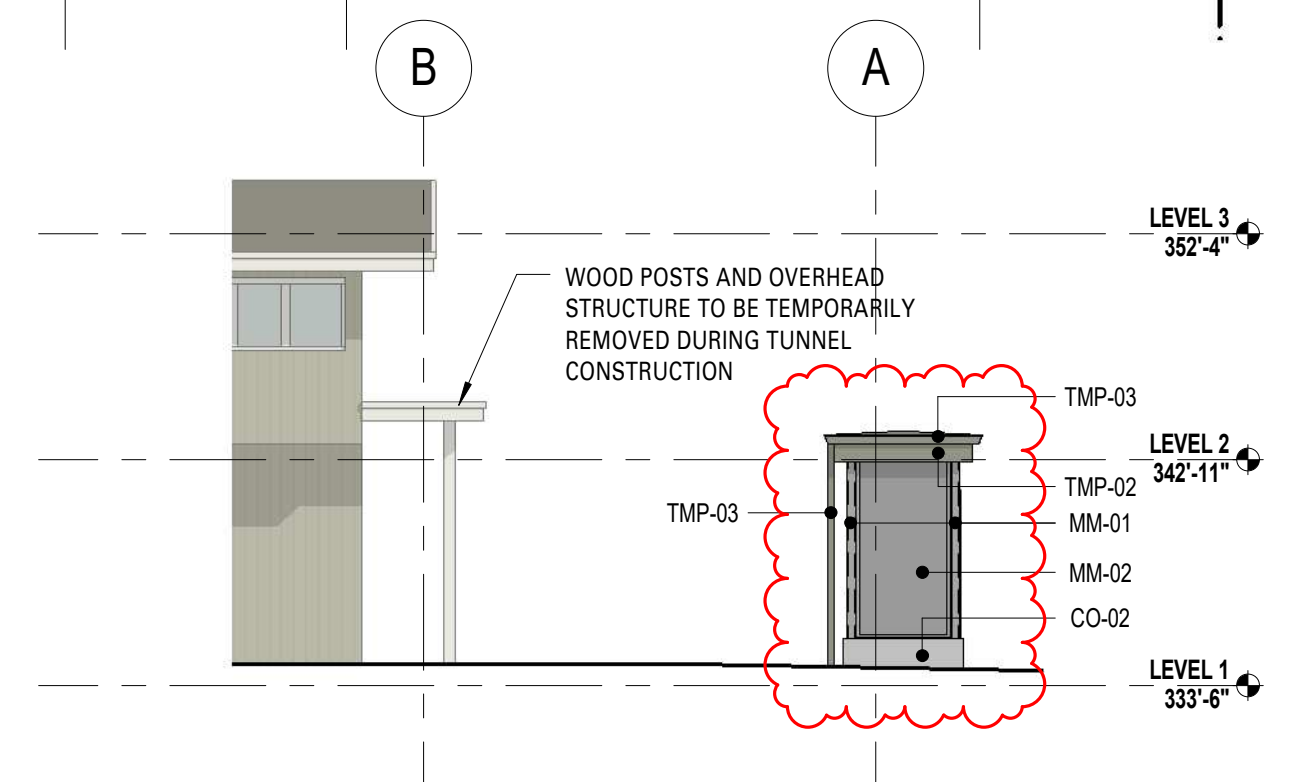
1 EAST ELEVATION - OVERALL
A3.01 1/8" = 1'-0"



3 NORTH ELEVATION - TUNNEL EXIT STAIR
A3.01 1/8" = 1'-0"



4 WEST ELEVATION - TUNNEL EXIT STAIR
A3.01 1/8" = 1'-0"



5 SOUTH ELEVATION - TUNNEL EXIT STAIR
A3.01 1/8" = 1'-0"

JULY 27 2018 - ISSUED FOR DPMA

Project Title
HAWTHORNE

4988 Cambie Street
Vancouver, B.C. V5Z 2Z5

Pennyfarthing

Client/Owner
PENNYFARTHING QE PARK PROPERTIES INC.
100-1450 Creekside Drive
Vancouver B.C. V6J 5B3

Sheet Title
TUNNEL EXIT STAIR ELEVATIONS

Drawn By HK
Reviewed by CH / KW

Project Number
1406

Plot Date 2018/07/27 Issue Date 18/07/27

Scale 1/8" = 1'-0" Issue/Revision 0

Sheet Number

A4.05D

