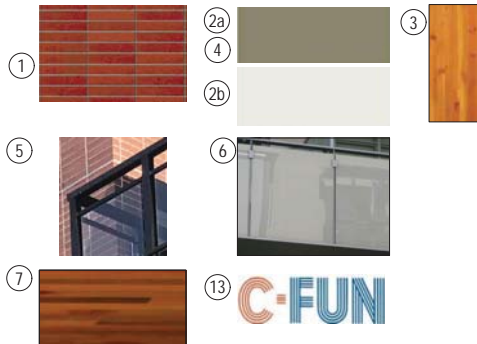




## West 4th Ave. ELEVATION



### EXTERIOR FINISH MATERIAL LEGEND

1	BRICK CLADDING	MUTUAL MATERIALS IMPERIAL RED
2a	HARDIE PANEL SMOOTH FINISH	WOODSTOCK BROWN
2b	HARDIE PANEL SMOOTH FINISH	ARCTIC WHITE
3	WOOD COLUMNS AT DECKS	STAINED CEDAR COLOUR
4	PAINTED CONCRETE	BN. TAOS TAUPE 2111-40
5	CLEAR GLASS RAILING AT BRICK UPSTAND	CLEAR
6	FROSTED GLASS RAILING AND PRIVACY PARTITIONS	WHITE
7	WOOD LOOKING SOFFIT	STAINED WOOD LOOK
8	DOUBLE GLAZED THERM BROKEN VINYL WINDOW & DOOR FRAME	BLACK
9	ALUM STOREFRONT WINDOWS AND DOORS	BLACK
10	ROOF FASCIA - HARDIE OR WOOD	BLACK
11	OVERHEAD GARAGE GATE	BLACK ALUMINIUM
12	CANOPY OVER COMMERCIAL STOREFRONT	GLASS AND BLACK ALUMINIUM
13	TALL WINDOWS AT CYPRESS STREET CRU WALL	CFUN RADIO RELATED GRAPHICS

#### BIRD FRIENDLY DESIGN FEATURES:

- GLASS USED FOR WINDOWS AND GUARDRAILS IS NOT REFLECTIVE.
- BALCONIES HAVE LARGE OVERHANGS TO REDUCE THE GLASS REFLECTION.
- REFER TO LANDSCAPE DRAWINGS FOR BIRD FRIENDLY PLANTS, AVAILABILITY OF WATER AND REDUCED LIGHT POLLUTION.

**BIRD FRIENDLY DESIGN FEATURES:**

1. GLASS USED FOR WINDOWS AND GUARDRAILS IS NOT REFLECTIVE.
2. BALCONIES HAVE LARGE OVERHANGS TO REDUCE THE GLASS REFLECTION.
3. REFER TO LANDSCAPE DRAWINGS FOR BIRD FRIENDLY PLANTS, AVAILABILITY OF WATER AND REDUCED LIGHT POLLUTION.



# Cypress St. ELEVATION

E:\CAD\JOB\2017\1711 - 4TH & CYPRESS\CPA\A3.0 DPA.DWG

THE MOST PROMINENT BUILDING CORNER COMMEMORATES PRESENCE OF CFUN RADIO STATION AT THIS SITE WITH:

- CORNER HERITAGE PLAQUE WITH THE ARCHIVE PHOTO OF THE ORIGINAL CFUN RADIO BUILDING - INSET IN BRICK CLADDING AND LIT
- CFUN REALTED GRAPHICS APPLIED TO LONG WINDOWS
- RESIDENTIAL LOBBY WILL HAVE ARCHIVE PHOTOS OF CFUN RADIO DISPLAYED IN ART FORM AT THE TALL INTERIOR LOBBY WALL.



**4th Ave. & Cypress St. Corner**

①		②a		③	
		④			
		②b			
⑤		⑥			
⑦		⑬			

**EXTERIOR FINISH MATERIAL LEGEND**

NO.	DESCRIPTION	MATERIAL
1	BRICK CLADDING	MUTUAL MATERIALS IMPERIAL RED
2a	HARDIE PANEL SMOOTH FINISH	WOODSTOCK BROWN
2b	HARDIE PANEL SMOOTH FINISH	ARCTIC WHITE
3	WOOD COLUMNS AT DECKS	STAINED CEDAR COLOUR
4	PAINTED CONCRETE	BM: TAOS TAUPE 2111-40
5	CLEAR GLASS RAILING AT BRICK UPSTAND	CLEAR
6	FROSTED GLASS RAILING AND PRIVACY PARTITIONS	WHITE
7	WOOD LOOKING SOFFIT	STAINED WOOD LOOK
8	DOUBLE GLAZED THERM BROKEN VINYL WINDOW & DOOR FRAME	BLACK
9	ALUM STOREFRONT WINDOWS AND DOORS	BLACK
10	ROOF FASCIA - HARDIE OR WOOD	BLACK
11	OVERHEAD GARAGE GATE	BLACK ALUMINIUM
12	CANOPY OVER COMMERCIAL STOREFRONT	GLASS AND BLACK ALUMINIUM
13	TALL WINDOWS AT CYPRESS STREET CRU WALL	CFUN RADIO RELATED GRAPHICS



Resitch Hemphill Architects

120 Powell Street, Unit 10  
Vancouver, BC Canada  
V6A 1G1

T 604.669.6002  
F 604.669.1091

www.rharchitects.ca

ISSUED:	DATE:
1. Rezoning Application	Dec. 30, 2017
2. Rezoning App. Re-submission	Sept. 07, 2018
3. D.P. Application	June 27, 2019

ISSUED FOR  
**DP APPLICATION**  
June 27, 2019

NO. REVISION:      DATE:  
This drawing is an instrument of service in the property of Resitch Hemphill Architects and may not be reproduced without the firm's permission. All information shown on this drawing is for use in this specific project only and shall not be used otherwise without written permission from this office. Contractors shall verify and be responsible for all dimensions on the job and this office shall be informed of any discrepancies and variations shown on drawing.

ARCHITECTURAL SEAL:

CLIENT:  
Harkerson B.C. Wholesale Lumber (1966) Ltd.  
12311 Mitchell Road,  
Richmond, BC

PROJECT:  
**DALGEN**  
1906 & 1918 West 4th Ave.  
VANCOUVER, BC

DRAWING TITLE:  
**BUILDING ELEVATION EAST**

DATABASE: 1711-A3.0.dwg  
SCALE: 1/8"=1'-0"  
PLOTDATE: June 2019  
DRAWN: SS  
CHECKED: BR

PROJECT NO. **1711**

DWG. NO. **A4.2**

DP No:      21 June 2019  
BP No:



Rositch Hemphill Architects

120 Powell Street, Unit 10  
Vancouver, BC Canada  
V6A 1G1

T 604.669.6002  
F 604.669.1091

www.rharchitects.ca

ISSUED: DATE:  
1. Rezoning Application Dec. 30, 2017  
2. Rezoning App. Re-submission Sept. 07, 2018  
3. D.P. Application June 27, 2019

ISSUED FOR  
DP APPLICATION  
June 27, 2019

NO. REVISION: DATE:  
This drawing is an instrument of service in the property of Rositch Hemphill Architects and may not be reproduced without the firm's permission. All information shown on the drawing is for use in this specific project only and shall not be used otherwise without written permission from this office. Contractors shall verify and be responsible for all dimensions on the job and this office shall be informed of any discrepancies and variations shown on drawing.

ARCHITECTURAL SEAL:

CLIENT:  
Harkerson B.C. Wholesale  
Lumber (1966) Ltd.  
12311 Mitchell Road,  
Richmond, BC  
PROJECT:  
**DALGEN**  
1906 & 1918 West 4th Ave.  
VANCOUVER, BC

DRAWING TITLE:  
**BUILDING ELEVATION  
SOUTH**

DATABASE: 1711-A3.0.dwg  
SCALE: 1/8"=1'-0"  
PLOT/DATE: June 2019  
DRAWN: SS  
CHECKED: BR

PROJECT NO. **1711**

DWG. NO. **A4.3**

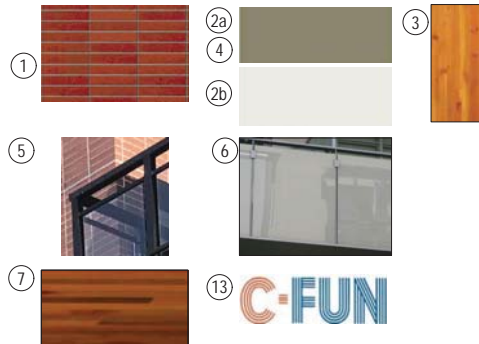
DP No: 21 June 2019  
BP No:



## Lane ELEVATION

### BIRD FRIENDLY DESIGN FEATURES:

- GLASS USED FOR WINDOWS AND GUARDRAILS IS NOT REFLECTIVE.
- BALCONIES HAVE LARGE OVERHANGS TO REDUCE THE GLASS REFLECTION.
- REFER TO LANDSCAPE DRAWINGS FOR BIRD FRIENDLY PLANTS, AVAILABILITY OF WATER AND REDUCED LIGHT POLLUTION.



### EXTERIOR FINISH MATERIAL LEGEND

1	BRICK CLADDING	MUTUAL MATERIALS IMPERIAL RED
2a	HARDIE PANEL SMOOTH FINISH	WOODSTOCK BROWN
2b	HARDIE PANEL SMOOTH FINISH	ARCTIC WHITE
3	WOOD COLUMNS AT DECKS	STAINED CEDAR COLOUR
4	PAINTED CONCRETE	BM. TAOS TAUPE 2111-40
5	CLEAR GLASS RAILING AT BRICK UPSTAND	CLEAR
6	FROSTED GLASS RAILING AND PRIVACY PARTITIONS	WHITE
7	WOOD LOOKING SOFFIT	STAINED WOOD LOOK
8	DOUBLE GLAZED THERM BROKEN VINYL WINDOW & DOOR FRAME	BLACK
9	ALUM STOREFRONT WINDOWS AND DOORS	BLACK
10	ROOF FASCIA - HARDIE OR WOOD	BLACK
11	OVERHEAD GARAGE GATE	BLACK ALUMINUM
12	CANOPY OVER COMMERCIAL STOREFRONT	GLASS AND BLACK ALUMINUM
13	TALL WINDOWS AT CYPRESS STREET CRU WALL	CFUN RADIO RELATED GRAPHICS

ISSUED:	DATE:
1. Rezoning Application	Dec. 30, 2017
2. Rezoning App. Re-submission	Sept. 07, 2018
3. D.P. Application	June 27, 2019

ISSUED FOR  
**DP APPLICATION**  
June 27, 2019

NO. REVISION:      DATE:  
This drawing is an instrument of service in the property of Rositch Hemphill Architects and may not be reproduced without the firm's permission. All information shown on the drawing is for use in this specific project only and shall not be used otherwise without written permission from this office. Contractors shall verify and be responsible for all dimensions on the job and this office shall be informed of any discrepancies and variations shown on drawing.

ARCHITECTURAL SEAL:

CLIENT:  
Harkerson B.C. Wholesale  
Lumber (1966) Ltd.  
12311 Mitchell Road,  
Richmond, BC

PROJECT:  
**DALGEN**  
1906 & 1918 West 4th Ave.  
VANCOUVER, BC

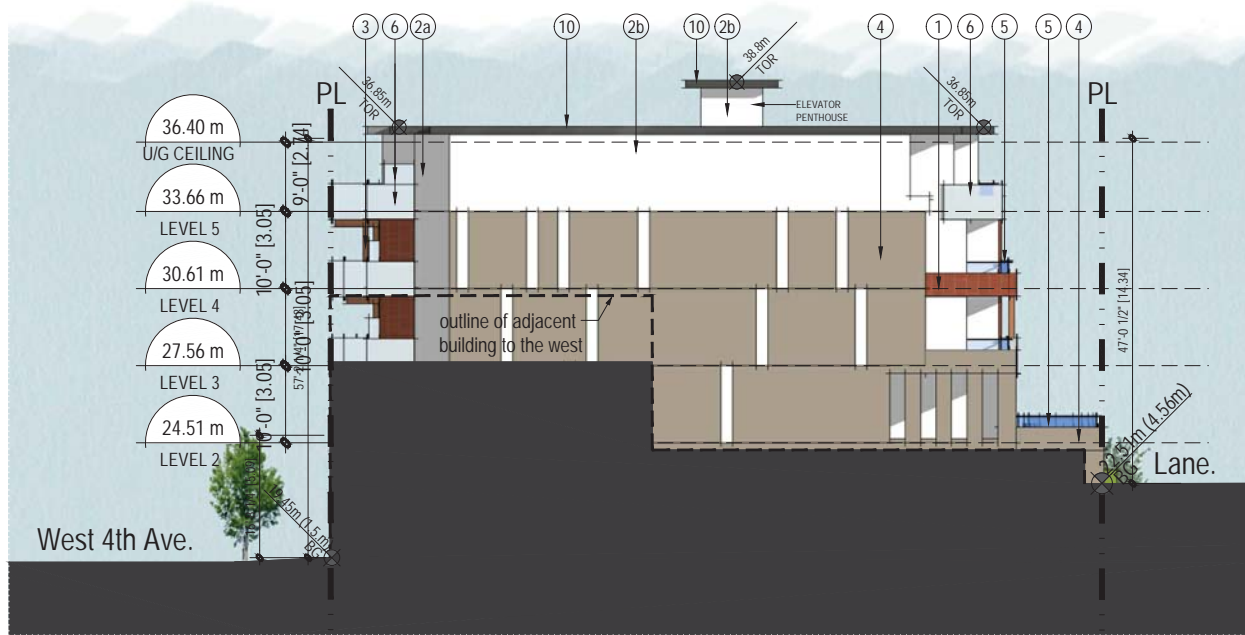
DRAWING TITLE:  
**BUILDING ELEVATION  
WEST**

DATABASE: 1711-A3.0.dwg  
SCALE: 1/8"=1'-0"  
PLOT DATE: June 2019  
DRAWN: SS  
CHECKED: BR

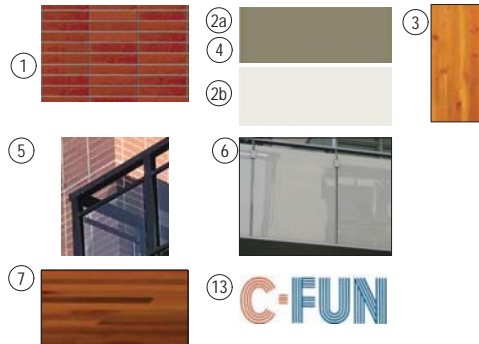
PROJECT NO. **1711**

DWG. NO.  
**A4.4**

DP No: 21 June 2019  
BP No:



## West ELEVATION



### EXTERIOR FINISH MATERIAL LEGEND

1	BRICK CLADDING	MUTUAL MATERIALS IMPERIAL RED
2a	HARDIE PANEL SMOOTH FINISH	WOODSTOCK BROWN
2b	HARDIE PANEL SMOOTH FINISH	ARCTIC WHITE
3	WOOD COLUMNS AT DECKS	STAINED CEDAR COLOUR
4	PAINTED CONCRETE	BM. TAOS TAUPE 2111-40
5	CLEAR GLASS RAILING AT BRICK UPSTAND	CLEAR
6	FROSTED GLASS RAILING AND PRIVACY PARTITIONS	WHITE
7	WOOD LOOKING SOFFIT	STAINED WOOD LOOK
8	DOUBLE GLAZED THERM BROKEN VINYL WINDOW & DOOR FRAME	BLACK
9	ALUM STOREFRONT WINDOWS AND DOORS	BLACK
10	ROOF FASCIA - HARDIE OR WOOD	BLACK
11	OVERHEAD GARAGE GATE	BLACK ALUMINIUM
12	CANOPY OVER COMMERCIAL STOREFRONT	GLASS AND BLACK ALUMINIUM
13	TALL WINDOWS AT CYPRESS STREET CRU WALL	CFUN RADIO RELATED GRAPHICS

#### BIRD FRIENDLY DESIGN FEATURES:

- GLASS USED FOR WINDOWS AND GUARDRAILS IS NOT REFLECTIVE.
- BALCONIES HAVE LARGE OVERHANGS TO REDUCE THE GLASS REFLECTION.
- REFER TO LANDSCAPE DRAWINGS FOR BIRD FRIENDLY PLANTS, AVAILABILITY OF WATER AND REDUCED LIGHT POLLUTION.