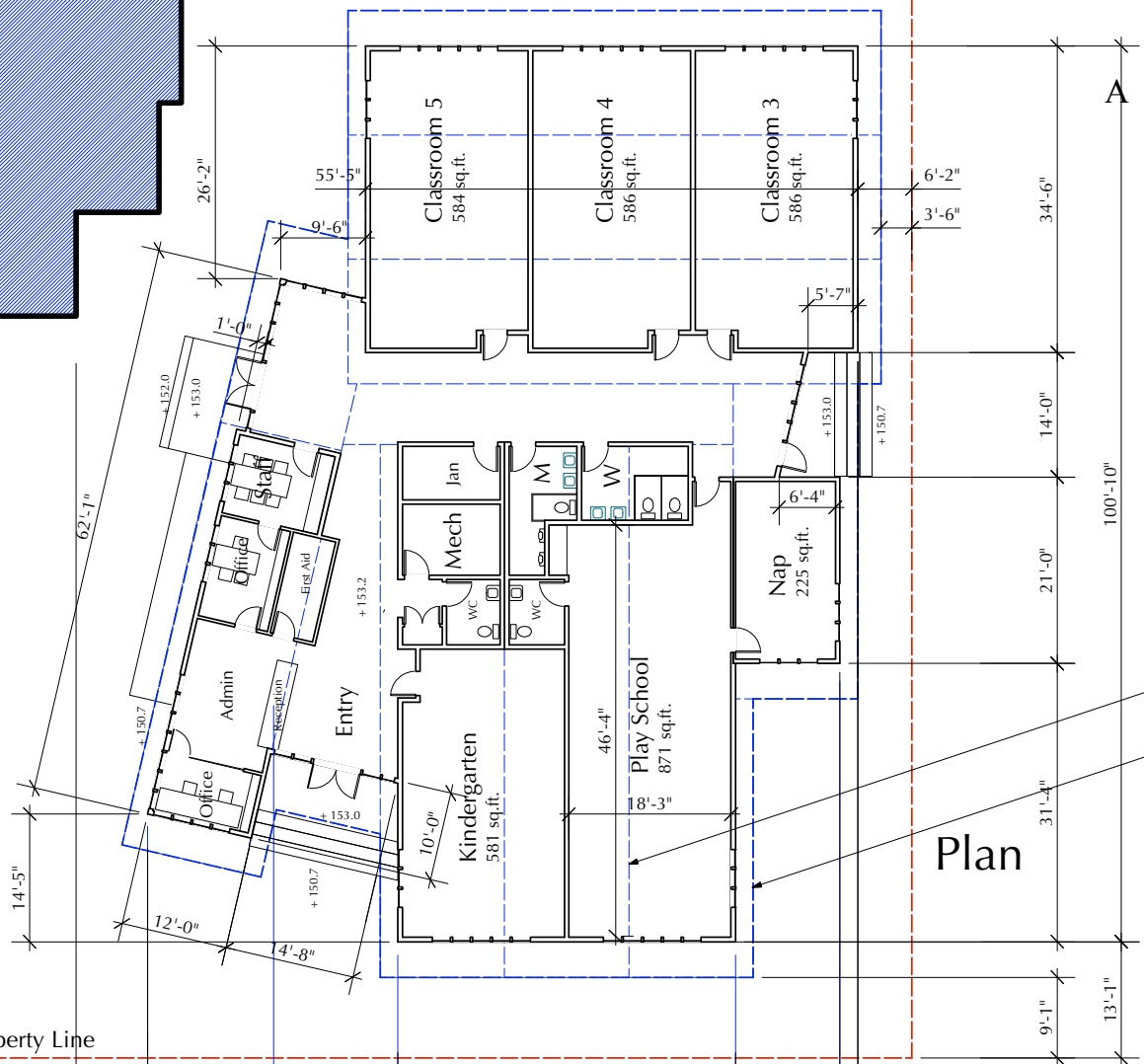
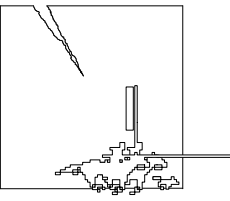


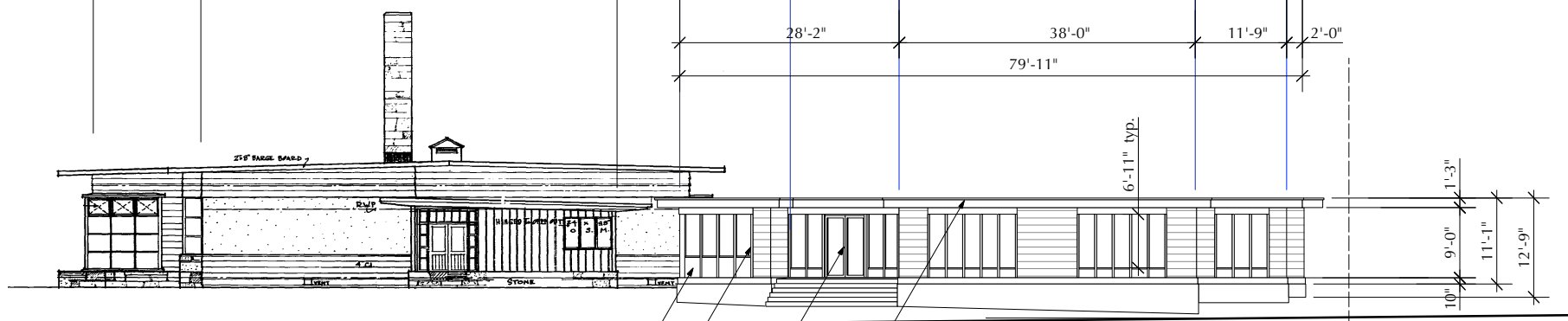
Existing School

A Z U R E A N ARCHITECTURE INC.
 EXACTITUDE PASSION TRUTH
 # 1204 - 445 West 2nd Street Vancouver V5Y 0E8 Canada
 +1 (604) 782-1941 operations@azurean.ca



Plan

Dashed Lines, Outline of Portable Modular Units
 Roof Overhang Above



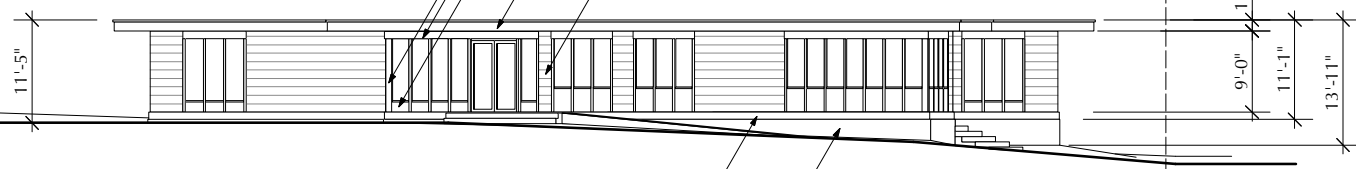
South Elevation

Existing School Beyond, Looking From 62nd Avenue

Roof Flashing, Slate Grey, Typ. all Elev.'s
 Doors, Slate Grey, Typ. all Elev.'s
 Window Frames, white, Typ. all Elev.'s
 Solid Panels, white, Typ. all Elev.'s
 Painted Wood Trim, white, Typ. all Elev.'s
 Painted Fascia, white, Typ. all Elev.'s
 Painted Wood or Composite Siding, light deep blue, Typ. all Elev.'s

West Elevation

Looking Towards the Lane



Painted Skirt, Slate Gray [Concrete Board or Concrete]
 Painted Wood Trim, white, Typ. all Elev.'s

Vancouver Hebrew Academy Portable Addition

1545 West 62nd Avenue

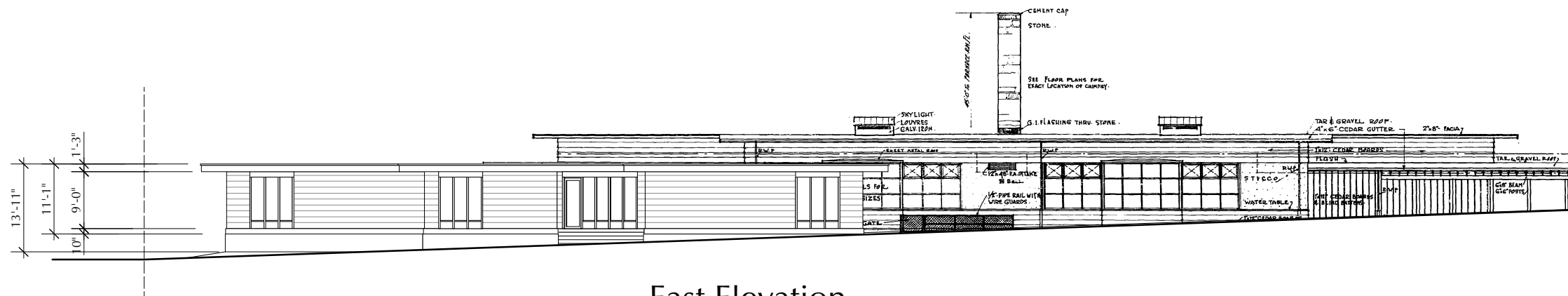
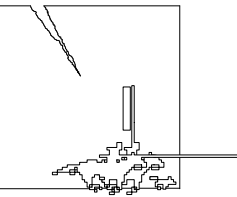
13 Apr 2018. Issued For Review
 18 Apr 2018. Issued For DP submission
 30 May 2018. Revised For DP submission

Plan + Elevations

South + West

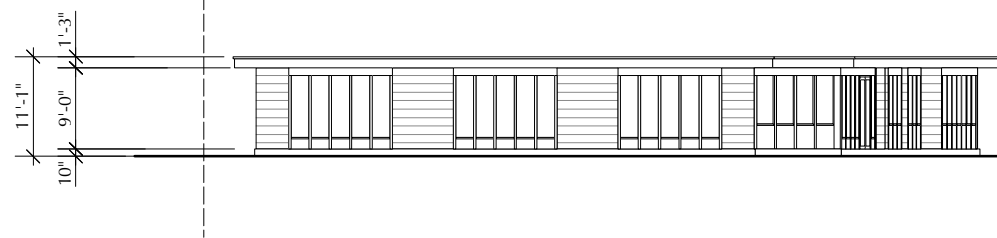
A.200

[when printed 22 x 34] 3/63" = 1'-0"



East Elevation

Looking Towards Shannon Park, Existing Building Beyond



North Elevation

Looking Towards 62nd Avenue

Vancouver Hebrew Academy Portable Addition

1545 West 62nd Avenue

13 Apr 2018. Issued For Review
18 Apr 2018. Issued For DP submission
30 May 2018. Revised For DP submission

Elevations

East + North

A.201

[when printed 22 x 34] 3/63" = 1'-0"