

**Legend**

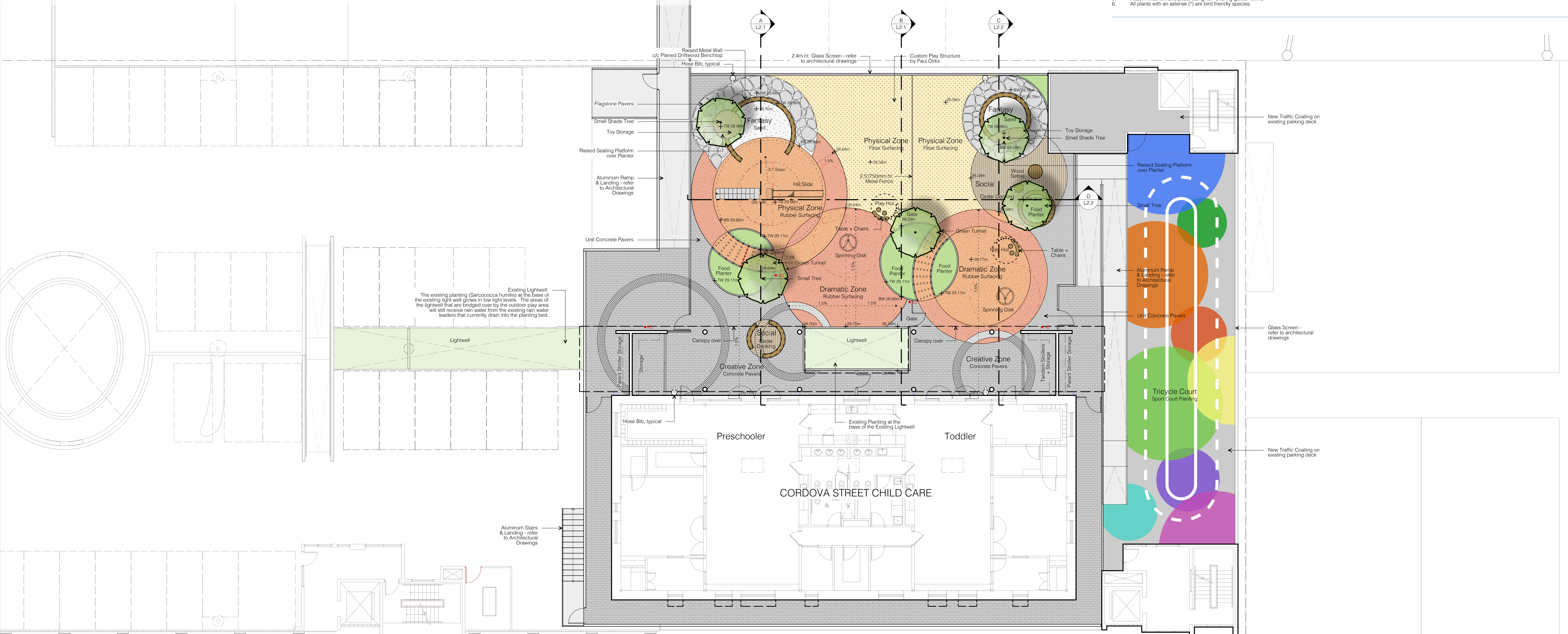
- Furniture + Structures:**
- Custom Play Hut c/w Table + Stools
  - Wood Seettes
  - 500 - 750mm Ht. Metal Fence + Gate
  - Driftwood Benchtpp
  - Metal Planter c/w Driftwood Benchtpp
  - Metal Planter
  - Metal Planter + Toy Storage
  - Metal Planter + Toy Storage
  - Green Tunnel planted with non-toxic Vines
  - Spinning Disk (Site Bag Item by Henderson Rec. Equipment 1-800-265-5462)
  - Hill Side (Embarkment Side by Columbia Cascade 1-800-547-1940)
- Stairs:**
- Solid Stone Stair Slabs
  - Aluminum Stairs & Landing refer to Architectural Drawings
  - Aluminum Ramp & Landing refer to Architectural Drawings
- Irrigation & Hose Bibs:**
- Frost Free Hose Bt
  - Irrigation Sub Up 50psi = 50gpm

- Surfaces:**
- Existing Parking Deck - refer to architecture
  - Unit Concrete Pavers Type 2 (Class: standard series unit pavers as manufactured by Abbotsford Concrete (604-892-4907), Colour: Granite) Size: Circle package - refer to plan for radii Pattern: Radial
  - Unit Concrete Pavers Type 1 (Class: standard series unit pavers as manufactured by Abbotsford Concrete (604-892-4907), Colour: Natural Pattern: Herringbone)
  - Poured in Place Safety Surfacing Colour 1 (As supplied by Marathon Surfaces (604-878-0625), Colour: Aqua Blue - 100% EPDM)
  - Poured in Place Safety Surfacing Colour 2 (As supplied by Marathon Surfaces (604-878-0625), Colour: Royal Blue - 100% EPDM)
  - Poured in Place Safety Surfacing Colour 3 (As supplied by Marathon Surfaces (604-878-0625), Colour: Red Orange - 100% EPDM)
  - Poured in Place Safety Surfacing Colour 4 (As supplied by Marathon Surfaces (604-878-0625), Colour: Orange Yellow - 100% EPDM)
  - Poured in Place Safety Surfacing Colour 5 (As supplied by Marathon Surfaces (604-878-0625), Colour: Grey - 100% EPDM)
  - Floor Safety Surfacing (Flar engineered wood safety surfacing as supplied by Rectec Industries (604-940-0067), Depth varies)
  - Wood Docking (2x6 cedar deck boards on 2 x 6 Pressure Treated Sleepers)
  - Basal Step Stones (Various sizes: 2" Thk. As supplied by Northwest Landscape Supply (604-435-4842))
  - Play Sand (Sherpcourse grain play sand)
  - Sport Court Paint - various colours (Flexcolour Line Marking Paint as supplied by Tomko Sport Systems (604-973-0257))
  - Soft Landscape: (Shrub/Perennial Beds)
- Grading + Drainage:**
- + TS 10.00m bottom of stair
  - + BS 10.00m top of stair
  - + BW 10.00m bottom of wall
  - + TW 10.00m top of wall
  - + 10.00m spot elevation
  - + FG 10.00m finished grade
  - 1% direction/percent slope
  - - - - - break in slope
  - direction/number of rises down
  - existing elevation (as per survey)
  - AD 10.00m Area Drain

**Considered Plant List**

key	qty	Botanical Name	Common Name	Size and Spacing
<b>Trees</b>				
		<i>Acrop palmatum</i>	Japanese Maple	8x8, 4cm calliper
		<i>Cornus stans</i>	Starlight Dogwood	8x8, 5cm calliper, 1.2m Ht. Std.
		<i>Malus - multi variety*</i>	Multi - variety Apple	8x8, 5cm calliper, 1.2m Ht. Std.
		<i>Parocia per. 'Inges Ruby Yase'</i>	Parisian Ironwood	8x8, 5cm calliper, 1.2m Ht. Std.
<b>Shrubs</b>				
		<i>Choysa ternata 'Arctic Pearl'</i>	Mexican Orange	#2 pot
		<i>Lavandula ang. 'Munstead'</i>	English Lavender	#2 pot
		<i>Rubus idaeus 'Chocoran'</i>	Raspberry	#2 pot
		<i>Vaccinium 'Northern'</i>	Dwarf Blueberry	#2 pot
<b>Vines</b>				
		<i>Acmistia kolonika</i>	Variegated Kiae Vine	#2 pot, staked
<b>Groundcovers, Perennials, Grasses and Ferns</b>				
		<i>Arenaria montana*</i>	Mountain Sandwort	#1 pot
		<i>Diarrhenanthem latifolium</i>	Sea Oats	#1 pot
		<i>Erigeron - everbearing</i>	Shrewsbury	#1 pot
		<i>Festuca ovina 'Elgin Blue'</i>	Blue Fescue	#1 pot
		<i>Beris semp. 'Masterpiece'</i>	Evergreen Candytuft	#1 pot
		<i>Rennisetum 'Maudry'</i>	Fourain Grass	#1 pot
		<i>Stachys byz. 'Big Ears'</i>	Lamb's Ear	#1 pot
		<i>Thymus x cit. 'Aureus'</i>	Lemon Thyme	#1 pot

- General Planting Notes:**
- All work shall meet or exceed the requirements as outlined in the Current Edition of the B.C. Landscape Standard.
  - Plant sizes and related container classes are specified according to the B.C. Landscape Standard Current Edition. For container classes #3 and smaller, plant sizes shall be as shown in the plant list and the Standard; for all other plants, both plant size and container class shall be as shown in the plant list. Specifically, when the plant list call for #6 class containers these shall be as defined in the BCNTA (ANSI) Standard.
  - Soil is to be sand based turf and mesh free. No substitutes.
  - All soft landscape areas are to be irrigated using a high efficiency drip system, complete with rain sensor. All work to IABC standards.
  - Attach vines to trellis posts using non-chafing garden twine.
  - All plants with an asterisk (\*) are bird friendly species.



1	2018.03.14	Issued for Development Permit
-	2018.01.18	Review
no.	date:	item:
Revisions:		

**dk** Duranto Krewk Ltd.  
102 - 1037 West 5th Avenue  
Vancouver BC V6J 1N9  
t: 604 684 4511  
f: 604 684 0577  
www.dk.bc.ca

Project:  
**Cordova St Parkade  
Child Care Addition**

Drawn by: JES  
Checked by: JES  
Date: 2018.02.07  
Scale: 1:100  
Drawing Title:  
**Landscape Plan**

Project No.:  
**17001**  
Sheet No.: