

### Legend

**Furniture + Structures:**

- Custom Play Hut c/w Table + Stools
- Wood Seettes
- 500 - 750mm ht. Metal Fence + Gate
- Driftwood Benchtop
- Metal Planter c/w Driftwood Benchtop
- Metal Planter
- Metal Planter + Toy Storage
- Metal Planter + Toy Storage
- Spinning Disk (Site Req Item by Henderson Rec. Equipment 1-800-265-5462)
- Hill Slide (Site Req Item by Columbia Cascade 1-800-547-1940)

**Stairs:**

- Solid Stone Stair Slabs
- Aluminum Stairs & Landing (refer to Architectural Drawings)
- Aluminum Ramp & Landing (refer to Architectural Drawings)

**Irrigation & Hose Bibs:**

- Frost Free Hose Bib
- Irrigation Sub Up (50psi = 50gpm)

**Surfaces:**

- Existing Parking Deck - refer to architecture
- Unit Concrete Pavers Type 2 (Vila stone series unit pavers as manufactured by Abbottford Concrete (604-892-4967), Colour: Granite. Size: Circle package - refer to plan for radii. Pattern: Radial)
- Unit Concrete Pavers Type 1 (Classic standard series unit pavers as manufactured by Abbottford Concrete (604-892-4967), Colour: Natural. Pattern: Herringbone)
- Poured in Place Safety Surfacing Colour 1 (As supplied by Marathon Surfaces (604-878-0625), Colour: Aqua Blue - 100% EPDM)
- Poured in Place Safety Surfacing Colour 2 (As supplied by Marathon Surfaces (604-878-0625), Colour: Royal Blue - 100% EPDM)
- Poured in Place Safety Surfacing Colour 3 (As supplied by Marathon Surfaces (604-878-0625), Colour: Red Orange - 100% EPDM)
- Poured in Place Safety Surfacing Colour 4 (As supplied by Marathon Surfaces (604-878-0625), Colour: Orange Yellow - 100% EPDM)
- Poured in Place Safety Surfacing Colour 5 (As supplied by Marathon Surfaces (604-878-0625), Colour: Grey - 100% EPDM)
- Floor Safety Surfacing (Flar engineered wood safety surfacing as supplied by Rectec Industries (604-940-0067), Depth varies.)
- Wood Docking (2x6 cedar deck boards on 2 x 6 Pressure Treated Sleepers)
- Basal Shep Stones (Various sizes: 2" Thk. As supplied by Northwest Landscape Supply (604-435-4842))
- Play Sand (Sharpcourse grain play sand)
- Sport Court Paint - various colours (Flexcolour Line Marking Paint as supplied by Tomiko Sport Systems (604-273-0257))

**Soft Landscape:**

- Shrub/Perennial Beds

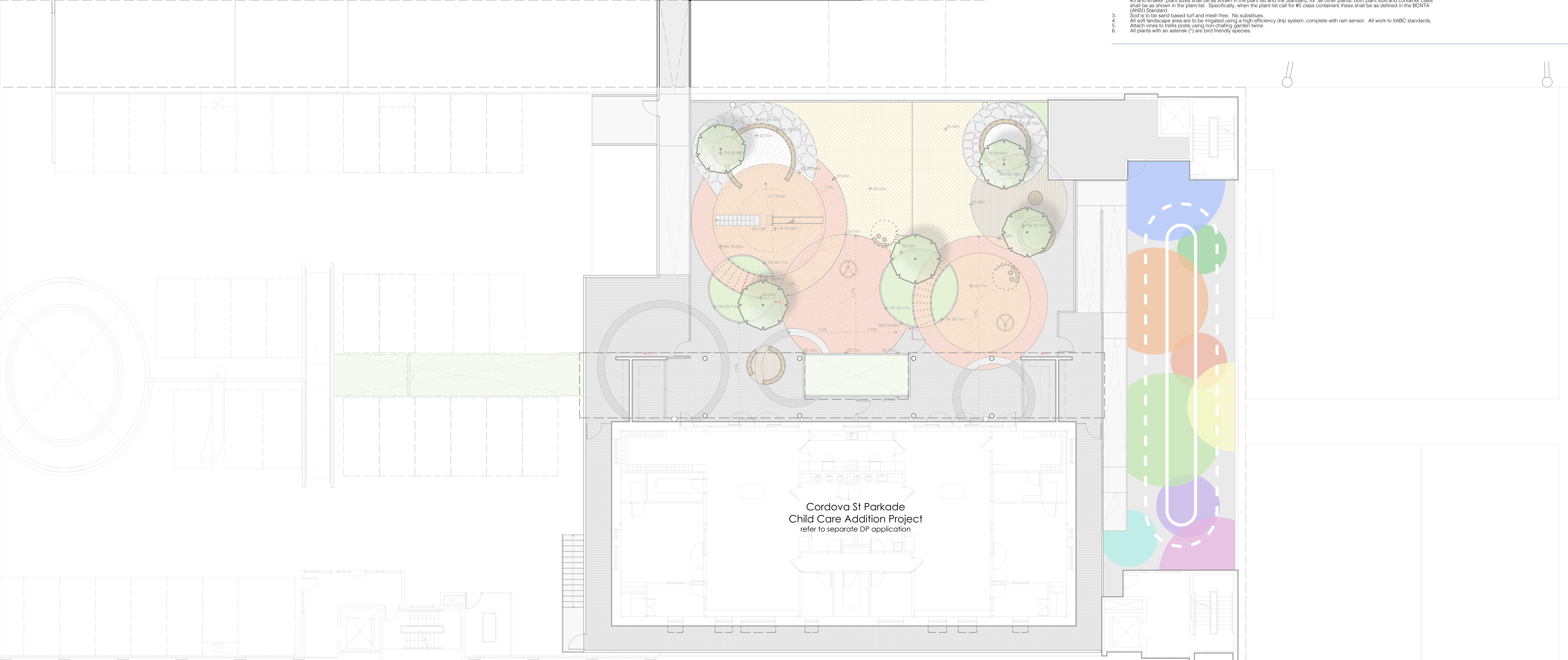
**Grading + Drainage:**

- + TS 10.00m (bottom of stair)
- + BS 10.00m (top of stair)
- + BW 10.00m (bottom of wall)
- + TW 10.00m (top of wall)
- + 10.00m (spot elevation)
- + FG 10.00m (finished grade)
- 1% (direction/percent slope)
- - - - - (trank in slope)
- direction/number of risers down
- existing elevation (as per survey)
- AD 10.00m (Area Drain)

### Considered Plant List

key	qty.	Botanical Name	Common Name	Size and Spacing
<b>Trees</b>				
		<i>Acet palmatum</i>	Japanese Maple	8x8 - 4cm calliper
		<i>Cornus stans</i>	Starlight Dogwood	8x8 - 5cm calliper, 1.2m ht. Std.
		<i>Malus - multi variety*</i>	Multi - variety Apple	8x8 - 5cm calliper, 1.2m ht. Std.
		<i>Parrotia per. 'Inges Ruby Yase'</i>	Parisian Ironwood	8x8 - 5cm calliper, 1.2m ht. Std.
<b>Shrubs</b>				
		<i>Choysa ternata 'Arctic Pearl'</i>	Mexican Orange	#2 pot
		<i>Lavandula ang. 'Munstead'</i>	English Lavender	#2 pot
		<i>Rubus idaeus 'Chocoran'</i>	Raspberry	#2 pot
		<i>Vaccinium 'Northland'</i>	Dwarf Blueberry	#2 pot
<b>Vines</b>				
		<i>Actinidia kolomikta</i>	Variiegated Kiwi Vine	#2 pot, staked
<b>Groundcovers, Perennials, Grasses and Ferns</b>				
		<i>Arenaria montana*</i>	Mountain Sandwort	#1 pot
		<i>Diastanthum latifolium</i>	Sea Oats	#1 pot
		<i>Erigeron - everbearing</i>	Shrewsbury	#1 pot
		<i>Festuca ovina 'Edgah Blue'</i>	Blue Fescue	#1 pot
		<i>Beris semp. 'Masterpiece'</i>	Evergreen Candytuff	#1 pot
		<i>Pennisetum o. 'Maudry'</i>	Fourain Grass	#1 pot
		<i>Stachys byz. 'Big Ears'</i>	Lamb's Ear	#1 pot
		<i>Thymus x cit. 'Aureus'</i>	Lemon Thyme	#1 pot

- General Planting Notes:**
- All work shall meet or exceed the requirements as outlined in the Current Edition of the B.C. Landscape Standard.
  - Plant sizes and related container classes are specified according to the B.C. Landscape Standard Current Edition. For container classes #3 and smaller, plant sizes shall be as shown in the plant list and the Standard; for all other plants, both plant size and container class shall be as shown in the plant list. Specifically, when the plant list call for #6 class containers these shall be as defined in the BCNTA (ANSI) Standard.
  - Soil is to be sand based turf and mesh free. No substitutes.
  - All soft landscape areas are to be irrigated using a high efficiency drip system, complete with rain sensor. All work to IABC standards. Attach vines to trellis posts using non-chafing garden twine.
  - Attach vines to trellis posts using non-chafing garden twine.
  - All plants with an asterisk (\*) are bird friendly species.



1	2018.03.14	Issued for Development Permit
2	2018.01.18	Review
no.	date:	item:

**Revisions:**

**dk** Duranto Krewk Ltd.  
102 - 1037 West 5th Avenue  
Vancouver BC V6J 1N9  
t: 604 684 4511  
f: 604 684 0577  
www.dk.bc.ca

Project:  
**Water St Parkade  
Child Care Addition**

Drawn by: JES  
Checked by: JES  
Date: 2018.02.07  
Scale: 1:100  
Drawing Title: **Landscape Plan**

Project No.: **17001**  
Sheet No.: