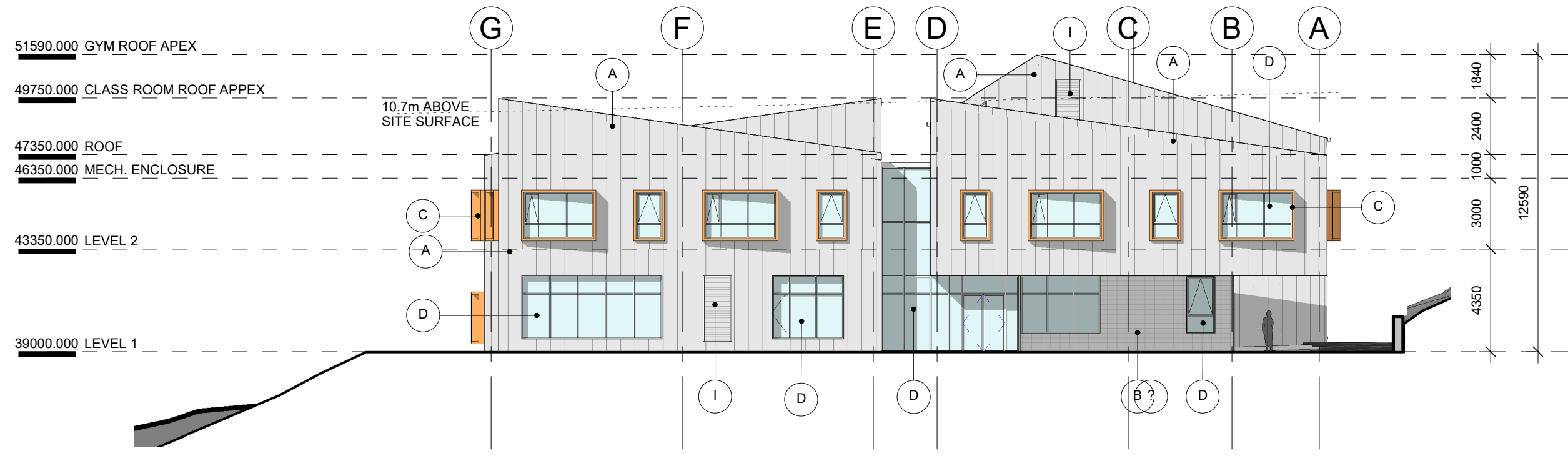
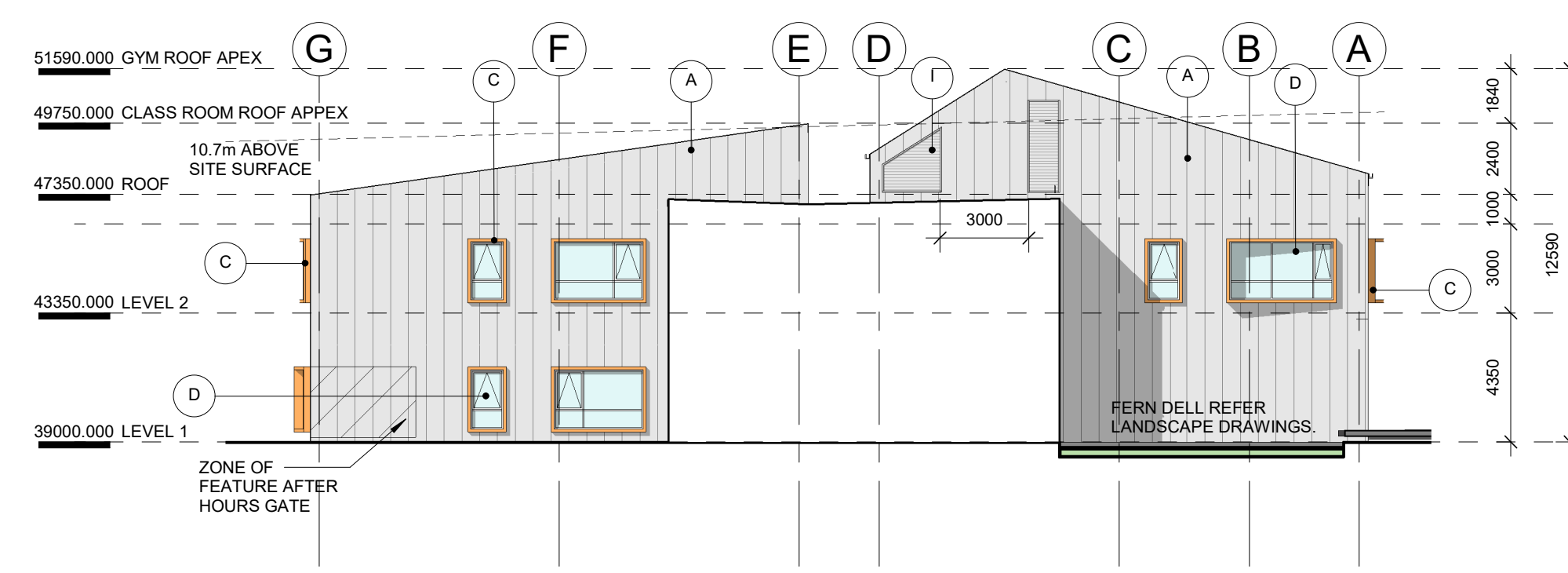


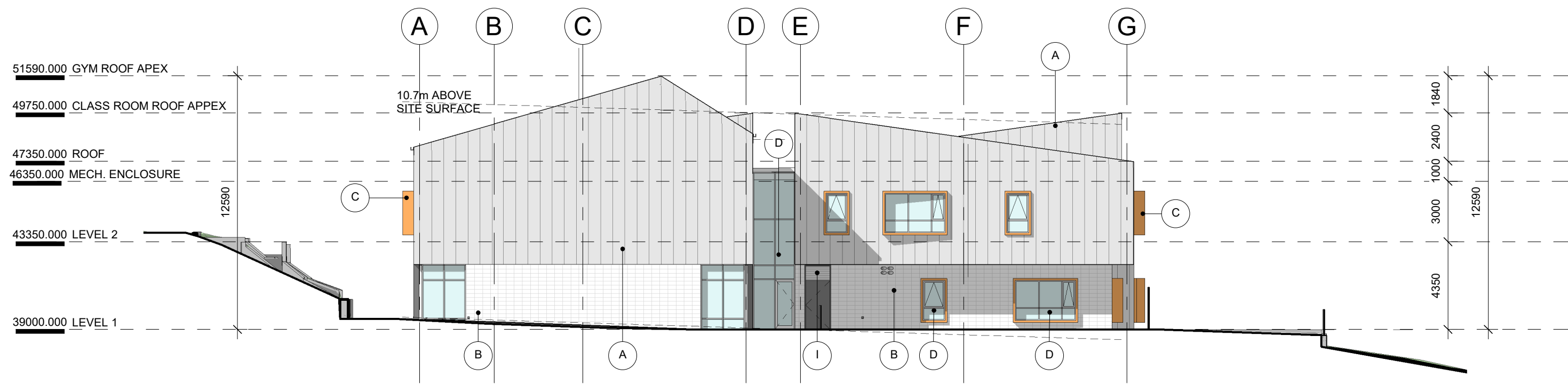
CONSULTANT LOGO:



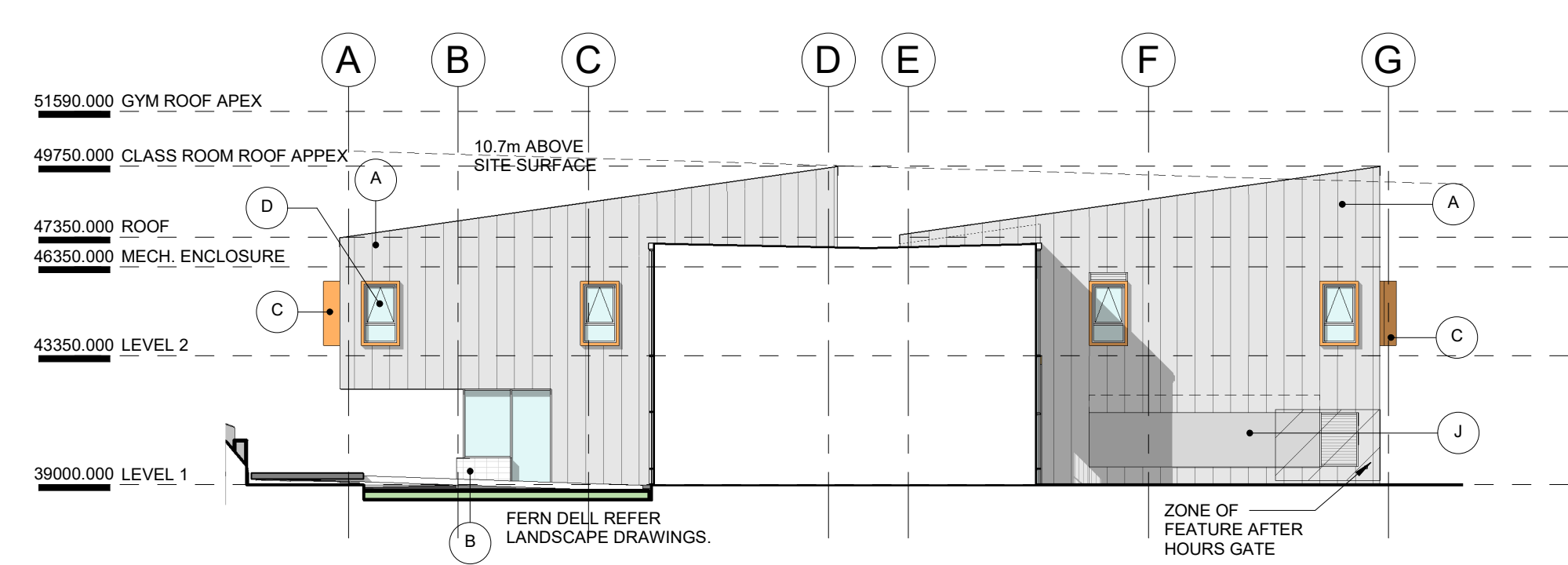
1 NORTH ELEVATION
1 : 200



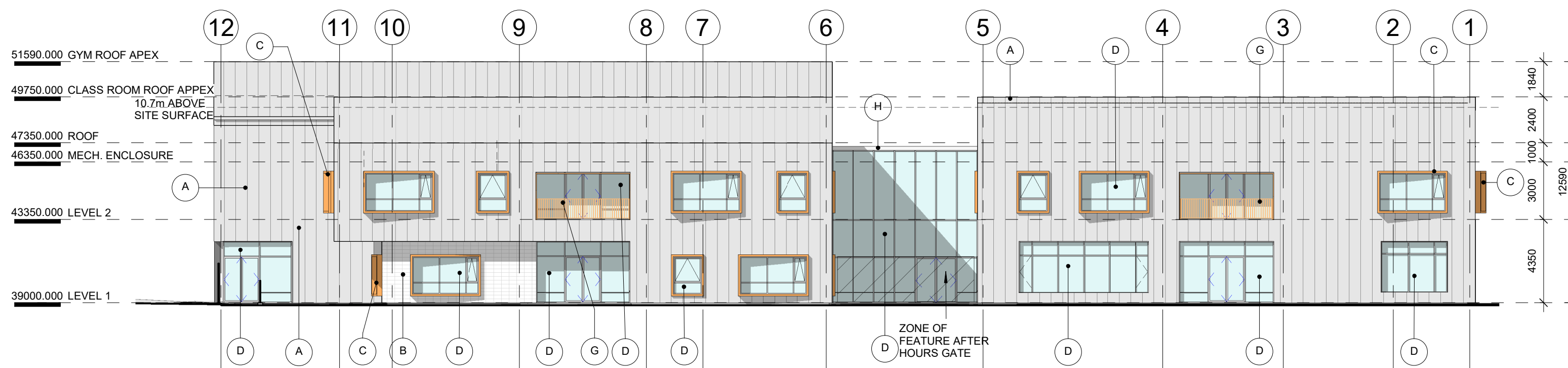
5 COURTYARD - LOOKING SOUTH
1 : 200



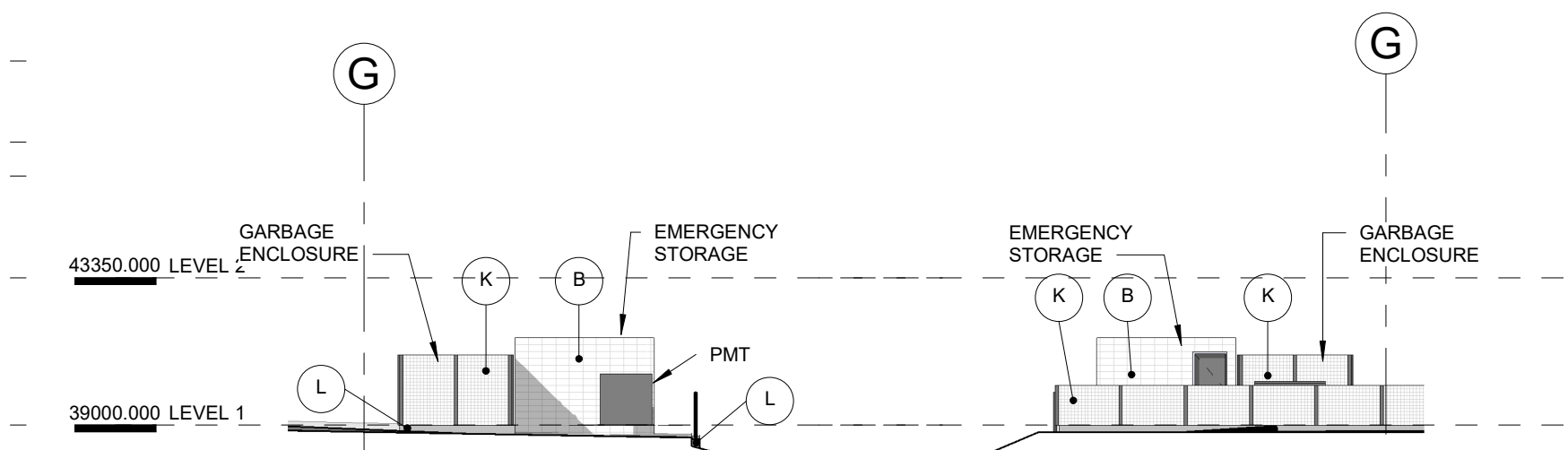
2 SOUTH ELEVATION
1 : 200



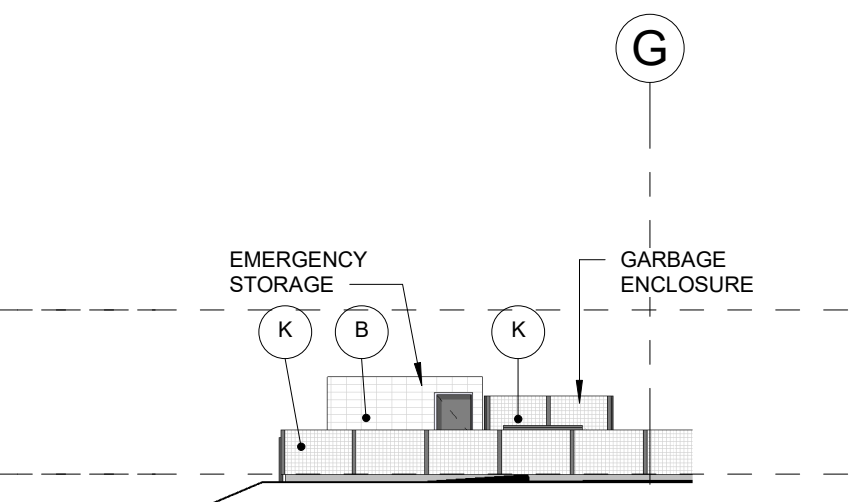
6 COURTYARD - LOOKING NORTH
1 : 200



3 EAST ELEVATION
1 : 200

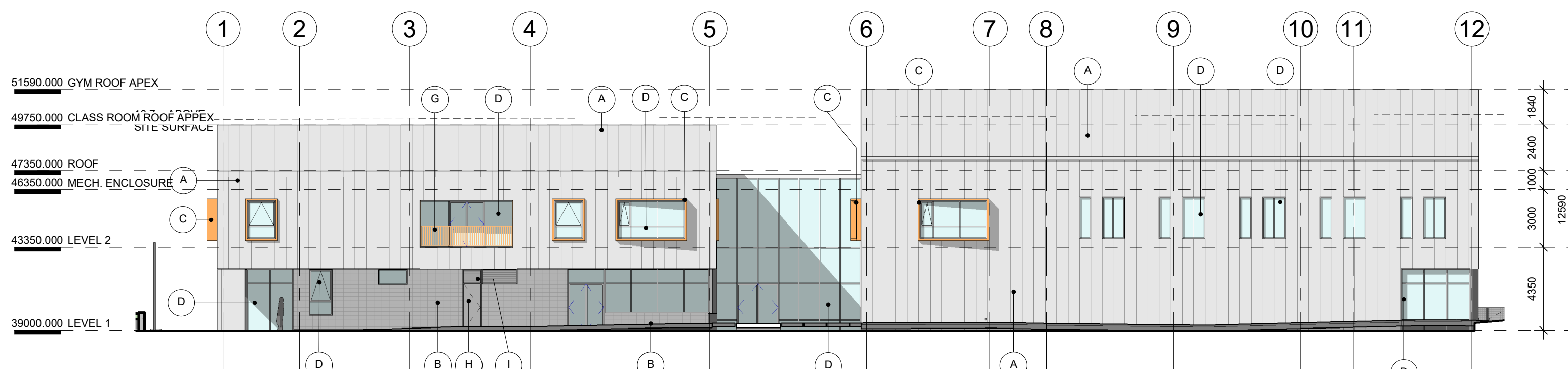


7 OUTBUILDING - SOUTH
1 : 200

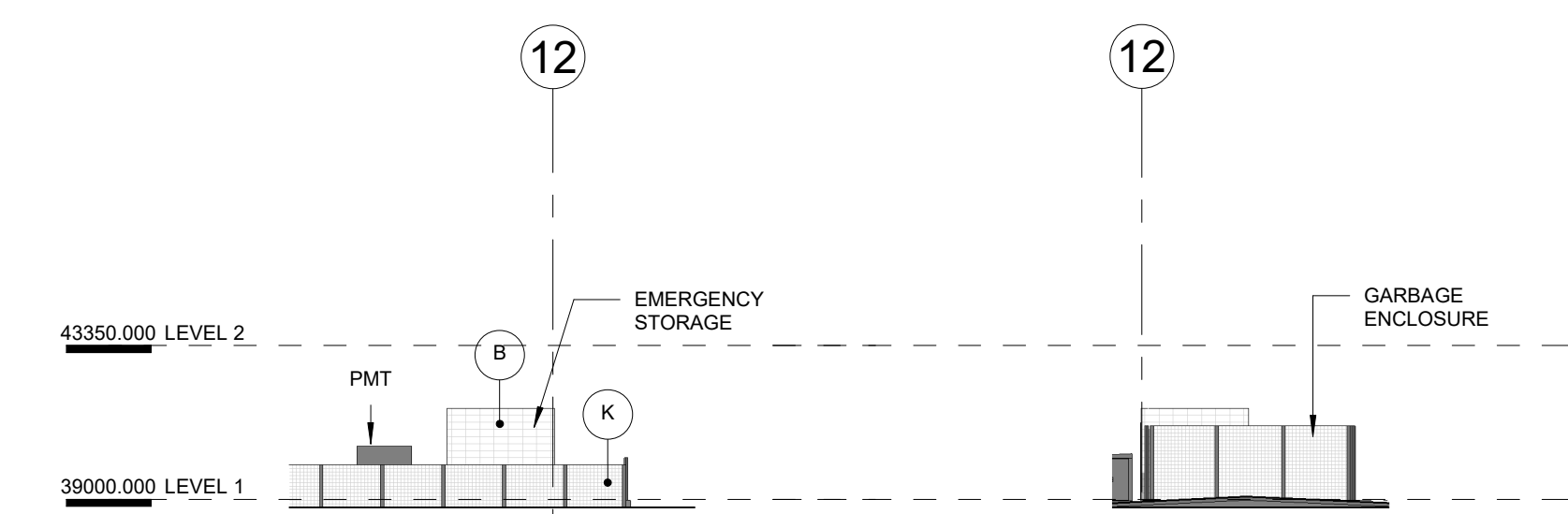


8 OUTBUILDING - NORTH
1 : 200

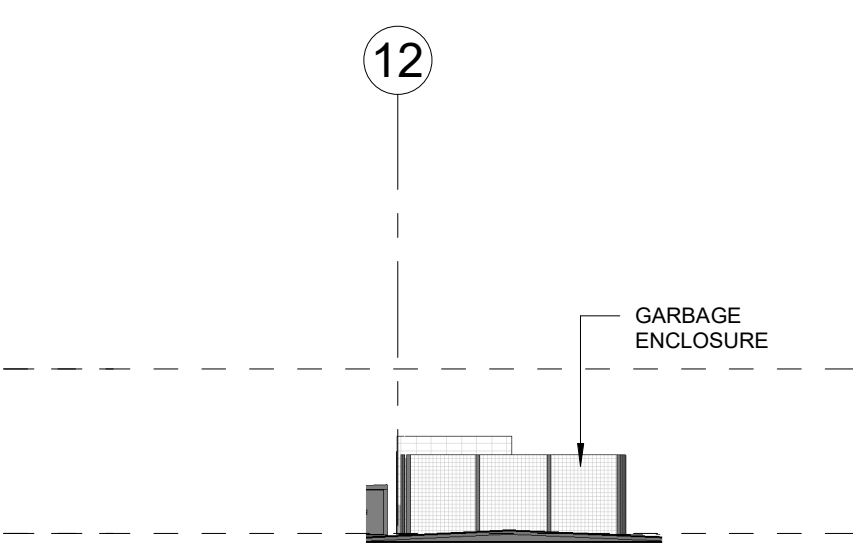
ELEVATION MATERIAL LEGEND	
(A)	STANDING SEAM METAL CLADDING
(B)	CONCRETE MASONRY UNIT
(C)	SHADING WINDOW FRAME
(D)	GLAZING - VISION GLASS
(E)	GLAZING - W/ SPANDREL OR SCREEN BEHIND
(F)	DELETED
(G)	GUARDRAIL - FLAT BAR PICKETS
(H)	METAL DOOR
(I)	CLEAR ANODIZED LOUVRE
(J)	OUTDOOR BLACKBOARD
(K)	CHAINLINK FENCE
(L)	CONCRETE CURB



4 WEST ELEVATION
1 : 200



9 OUTBUILDING - EAST
1 : 200



10 OUTBUILDING - WEST
1 : 200

1759_Begbie Elementary
1430 LILLOOET ST., VANCOUVER, BC

REVISION DESCRIPTION ISSUED FOR DEVELOPMENT PERMIT
DATE 2018.08.31
2

BUILDING ELEVATIONS

A301

SCALE: 1 : 200

HCMA Architecture + Design
400 - 675 West Hastings Street
Vancouver BC V6B 1N2 Canada
T 604.732.6620
W hcma.ca