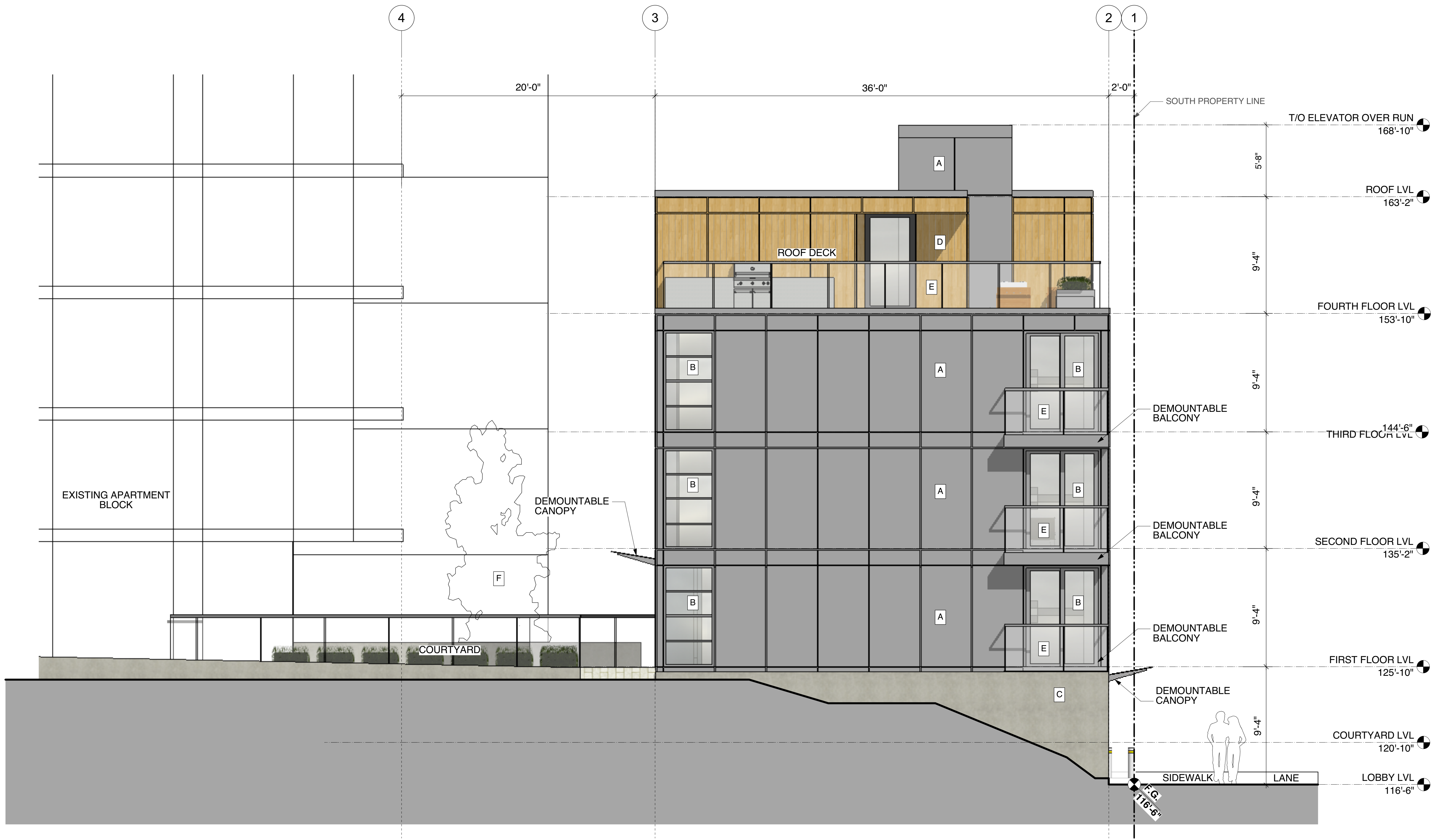


NOTES:  
 COPYRIGHT ALL RIGHTS RESERVED. ALL IDEAS, DESIGNS, DRAWINGS AND REPRODUCTIONS ARE THE PROPERTY OF STUART HOWARD ARCHITECTS AND ARE NOT TO BE USED OR REPRODUCED WITHOUT WRITTEN PERMISSION OF THIS OFFICE.  
 NOT TO BE USED FOR CONSTRUCTION UNLESS COUNTERSIGNED. CONTRACTOR TO VERIFY DIMENSIONS BEFORE PROCEEDING AND NOTIFY THE ARCHITECTS OF ANY DISCREPANCIES.

**EXTERIOR FINISH SCHEDULE**

- A METAL PANEL CLADDING SYSTEM ON PROPRIETARY RAINSCREEN SYSTEM
- B GLAZING
- C ARCHITECTURAL CONCRETE
- D WOODEN PANEL CLADDING SYSTEM ON PROPRIETARY RAIN SCREEN SYSTEM
- E GLASS GUARD
- F TREE AS PER LANDSCAPE PLAN



| No. | Date | Issue Notes |
|-----|------|-------------|
|     |      |             |

| Issues |
|--------|
|        |

Architect

**SH** **STUART HOWARD ARCHITECTS INC.**  
 MEMBERS AIBC - RAIC - AIA  
 405 - 375 West 5th Avenue Vancouver B.C. V5Y 1J6  
 phone - 604.688.5585 fax - 604.688.7486

Seal

Project Title

**1176 Burnaby St. Laneway Infill**

1176 Burnaby St. Vancouver, B.C.

Sheet Title

**WEST ELEVATION**

| Issue Date | Plot Date  | Sheet No.    |
|------------|------------|--------------|
|            | 2016.06.14 | <b>A3.02</b> |

|                      |                    |
|----------------------|--------------------|
| Designed By<br>SHA   | Reviewed By<br>SHA |
| Drawn By<br>AB       | Checked By<br>NR   |
| Project ID<br>215.08 | Scale<br>As Noted  |

4 West Elevation  
 Scale: 1/4" = 1'-0"

File name: 1176 Burnaby-20160610\_AS.rvt