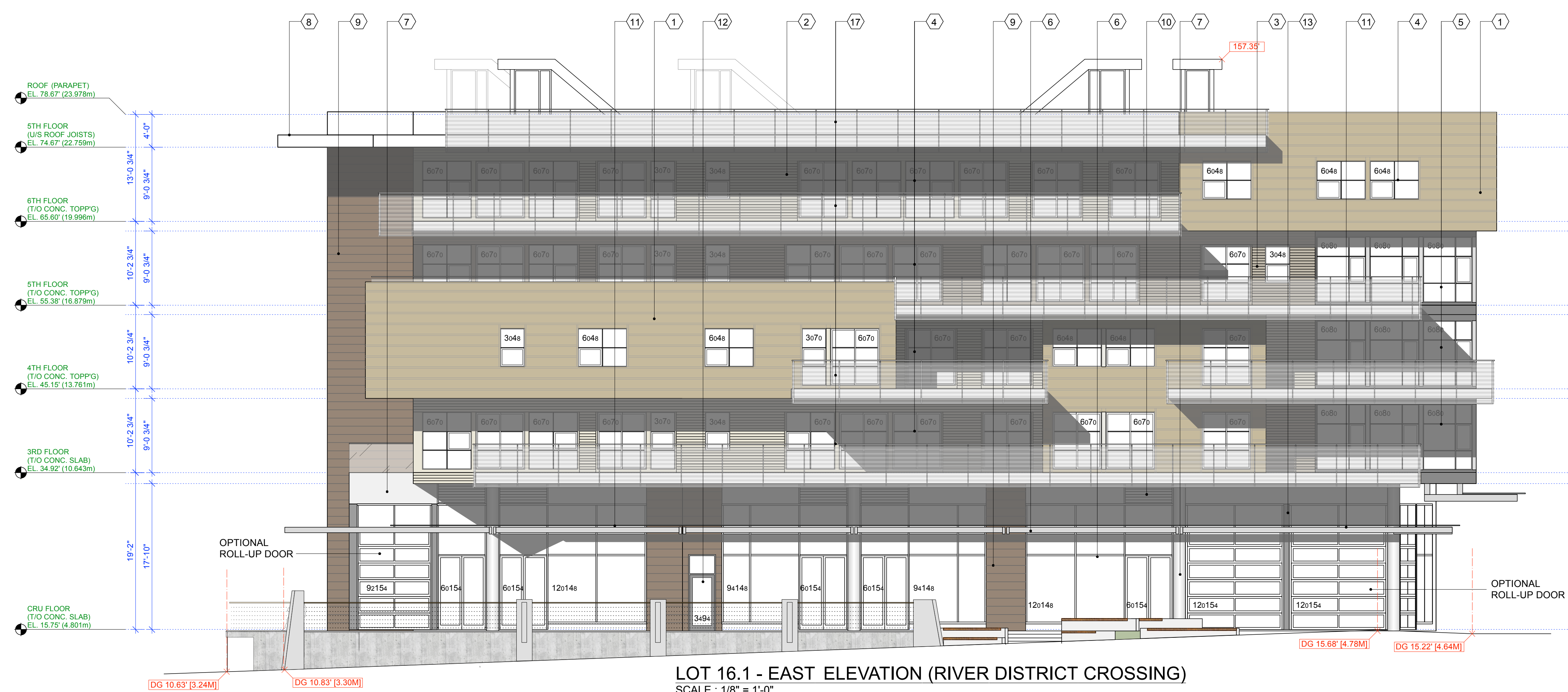




LOT 16.1 - NORTH ELEVATION (SAWMILL CRESCENT)  
SCALE : 1/8" = 1'-0"



LOT 16.1 - EAST ELEVATION (RIVER DISTRICT CROSSING)  
SCALE : 1/8" = 1'-0"

**ELEVATION KEY NOTES :**

- ① STANDING SEAM METAL PANEL
- ② HARDIE - LAP SIDING - COLOUR 1
- ③ HARDIE - LAP SIDING - COLOUR 2
- ④ VINYL WINDOW OR SLIDING DOOR
- ⑤ ALUMINUM WINDOW
- ⑥ STOREFRONT
- ⑦ CLEAR-SEALED CONCRETE
- ⑧ PAINTED FASCIA
- ⑨ METAL PANEL
- ⑩ METAL LOUVER
- ⑪ STEEL AND GLASS CANOPY
- ⑫ METAL EXIT DOOR WITH GLAZED PANEL
- ⑬ METAL STOREFRONT PANEL
- ⑭ METAL ADDRESS LETTERS
- ⑮ CLEAR SEALED CONCRETE BASE
- ⑯ S.S. WIRES FOR GREEN SCREEN
- ⑰ METAL AND GLASS GUARDRAIL
- ⑱ COMPOSITE PANEL

NO.	DATE	REVISIONS
CONSULTANT		

Copyright. All rights reserved.  
Reproduction in whole or in part is prohibited.  
This drawing as an instrument of service is the property of the architect and may not be used in any way without the written permission of this office.

**PROJECT**  
RIVER DISTRICT (16.1)  
MIXED-USE DEVELOPMENT

LOT 16.1  
VANCOUVER, B.C.

**Yamamoto Architecture Inc.**

2388 oak street, vancouver, british columbia  
V6H 4J1 tel: 604-731-1127 fax: 604-731-1327

**DRAWING TITLE**  
ELEVATIONS

SCALE	1/8" = 1'-0"	SHEET NO.	A3.1
DATE	SEPT. 3, 2014	OF	
DRAWN	TY	PROJ. NO.	1407
CHECKED	TY		