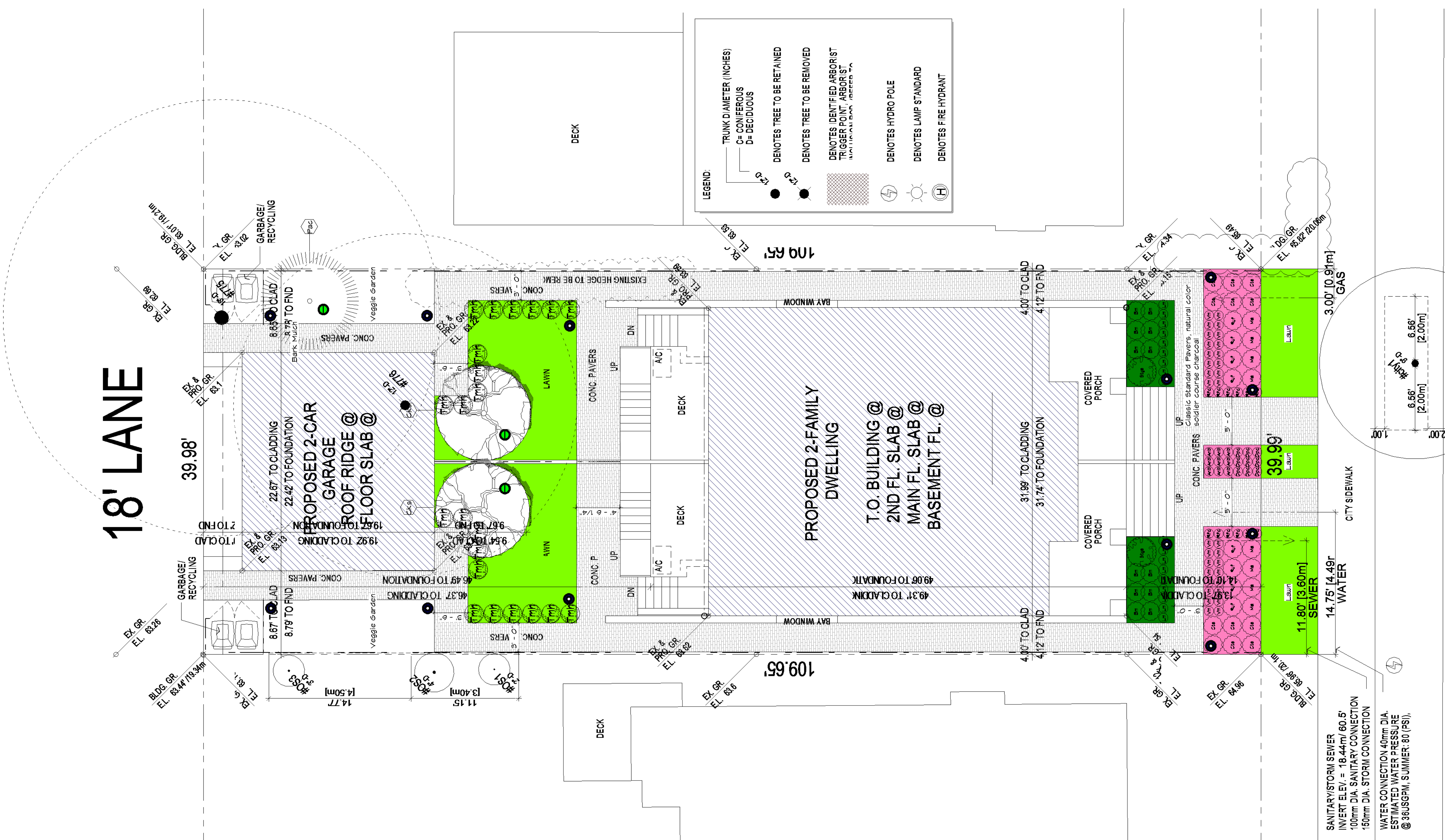


Revisions

No.	Date	Details	By

18' LANE

17TH AVE



LEGEND:

- TRUNK DIAMETER (INCHES)
 C= CONIFEROUS
 D= DECIDUOUS
- DENOTES TREE TO BE RETAINED
- DENOTES TREE TO BE REMOVED
- DENOTES IDENTIFIED ARBOR ST TRIGGER POINT ARBOR ST. (NORTH A.D. 100, 100000)
- DENOTES HYDRO POLE
- DENOTES LAMP STANDARD
- DENOTES FIRE HYDRANT

Planting Schedule

Key	QTY	Botanical Name	Common Name	Planted Size	Planting Comment
Cks	2	Cornus kousa 'satomi'	kousa dogwood	3.5m HT	B4B
Pac	1	Ficea abies 'cupressina'	Columnar Norway Spruce	3.5m HT	B4B
Stys	2	schefflera taiwaniana 'yuan shan'	Yuan Shan hardy schefflera	#5	3' OC
Bm	12	Buxus microphylla 'winter gem'	winter gem boxwood	#3	18" OC
Cts	12	Choisya ternata 'sundance'	Mexican orange	#3	2' OC
Ma	8	Muscari armeniacum	grape hyacinth	#2	18" OC
Ruf	8	Rudbeckia fulgida var. goldsturm	black eyed Susan	#2	18" OC
Anb	9	Aster novi belgii Lady in Blue	Fall aster	#1	12" OC
Dpc	9	Dianthus plumarius 'cottage pink'	Feathered pink	#1	12" OC
Lm	18	Lil'iope muscari	lily turf	#1	12" OC
Rfc	12	Rosa 'Fragrant Cloud'	hybrid tea rose	#1	12" OC
Vm	32	Vinca minor	common periwinkle	#1	12" OC
Tmh	22	Taxus media hicksii	yew	4' HT	2' OC

- Path Light (high)
- Path Light
- Tree Light
- Wall Light
- Step Light
- Spot Light
- LED Light

1 SITE PLAN
 SCALE: 1/8"=1'-0"



VICTORERIC
 15 EAST 3RD AVENUE
 VANCOUVER, BC, V5T-1C5
 T:604.677.0021 F:604.677.0178
 www.victoreric.com

Project:
ONG RESIDENCE

2733 W 7TH AVE
 VANCOUVER

Drawing Title:
 Landscape Plan

Project No. Drawing No.
 17008-02733
 Drawn By: YS
 Approved By: RG
L1

9/18/2017 1:43:03 PM
ISSUED FOR REVIEW
 NOT FOR CONSTRUCTION
 CHECKED BY:
 DATE: