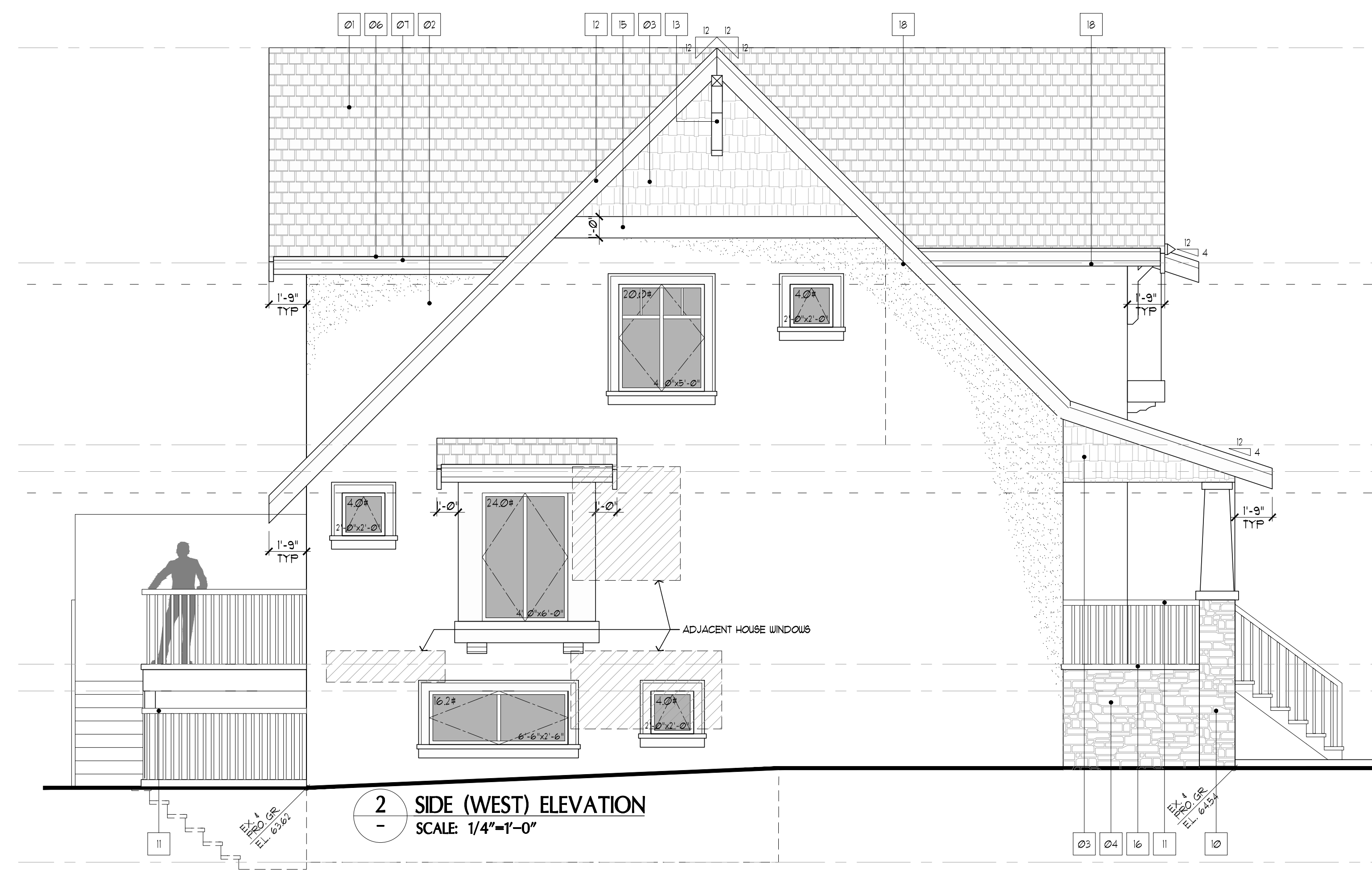


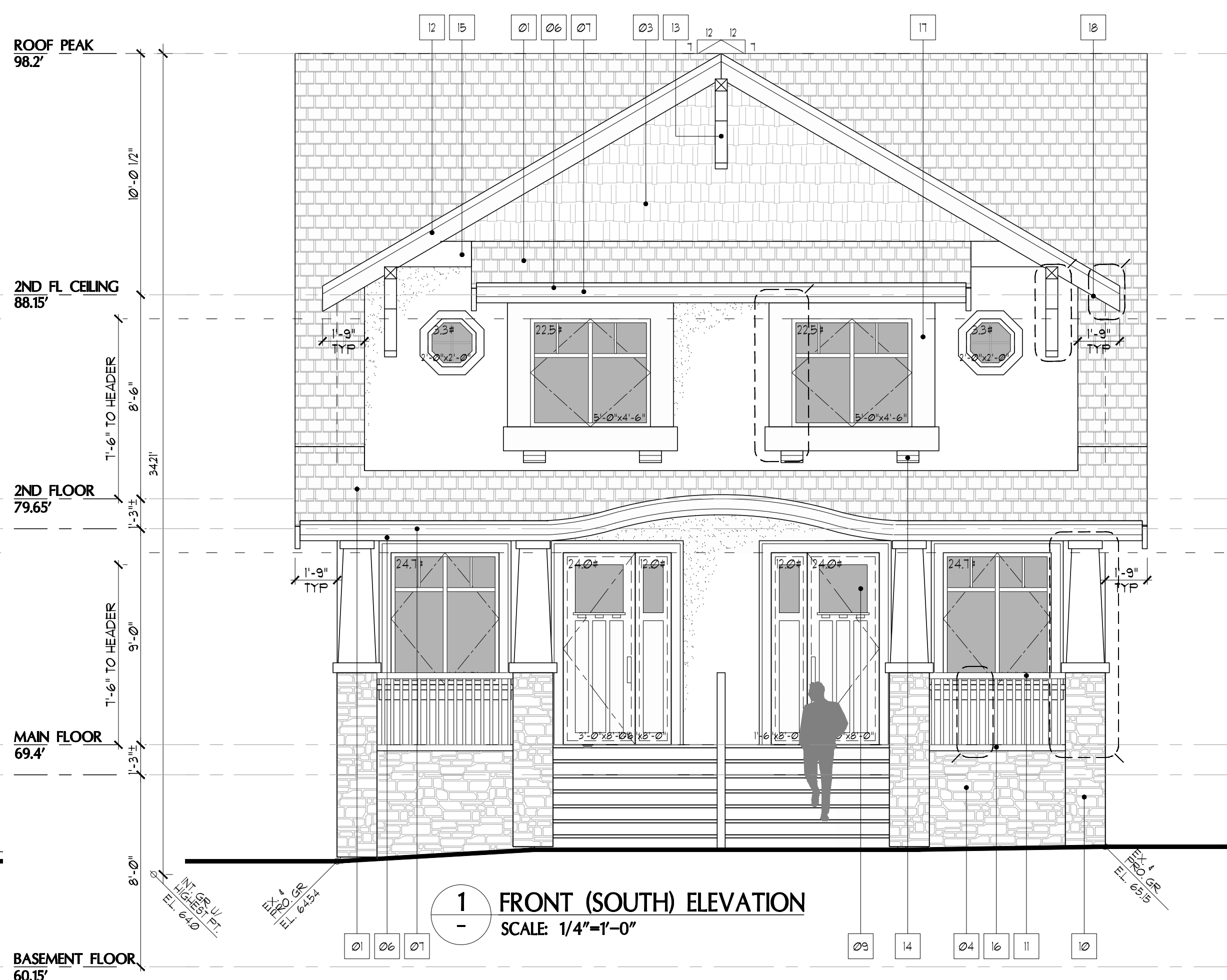
Copyright Reserved  
 This plan and design are, and at all time remain the exclusive property of VICTORERIC DESIGN GROUP and cannot be used or reproduced without written consent. Written dimensions shall have precedence over scaled dimensions. Contractors shall verify and be responsible for all dimensions and conditions on the job and the office shall be informed of any variations from the dimensions and conditions shown on the drawing.

REVISIONS

No.	Date	Details	By
1	20 SEP 17	ISSUED FOR DE	MM



2 SIDE (WEST) ELEVATION  
 SCALE: 1/4"=1'-0"



1 FRONT (SOUTH) ELEVATION  
 SCALE: 1/4"=1'-0"

**SPATIAL SEPERATION:**

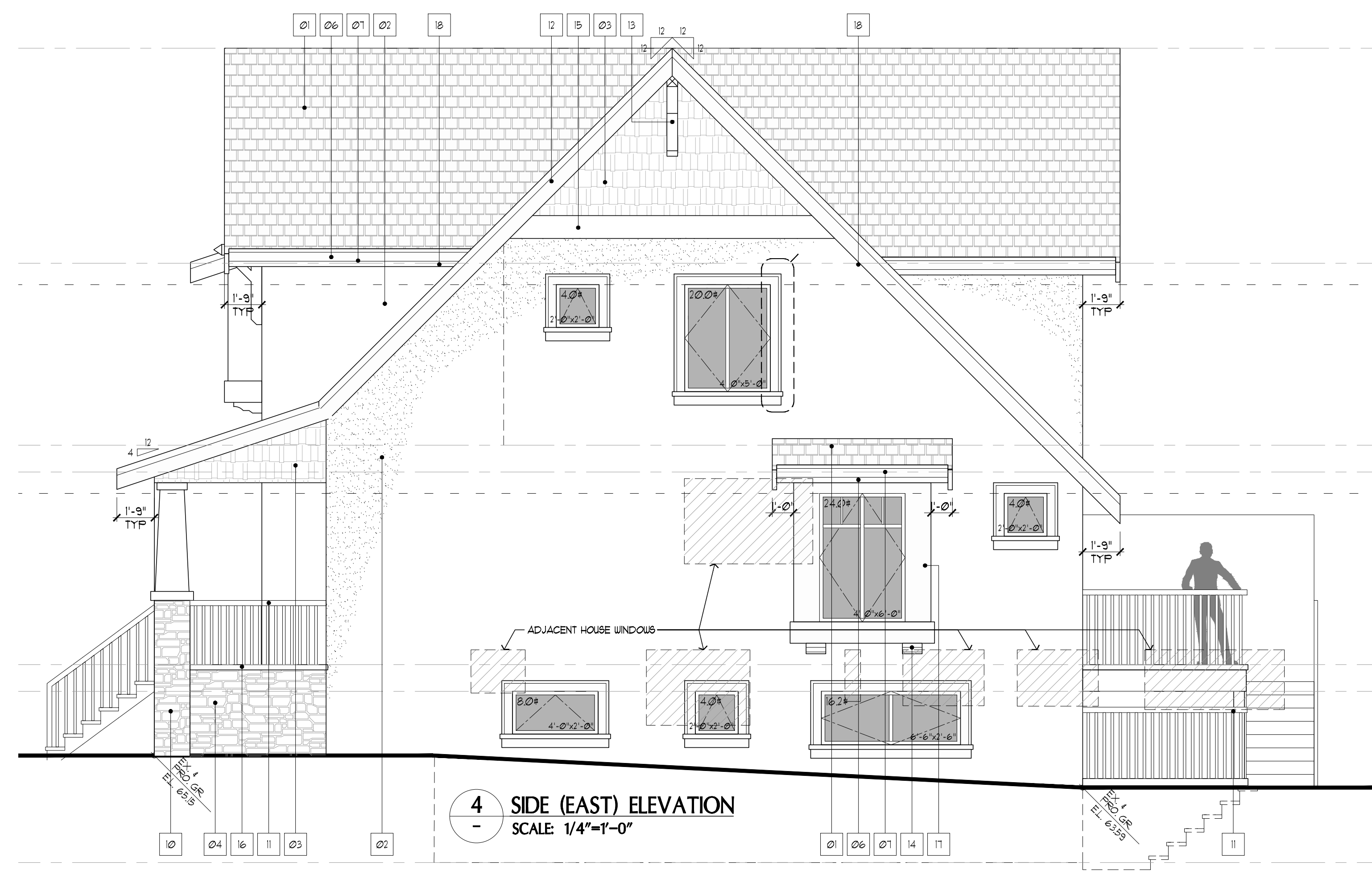
EAST FACE:	
PROPOSED UNPROTECTED OPENINGS:	83.2 SF
LIMITING DISTANCE:	4.00 FT.
EXPOSING BUILDING FACE:	850.0 SF
ALLOWABLE UNPROTECTED OPENINGS:	14% 119.0 SF

**WEST FACE:**

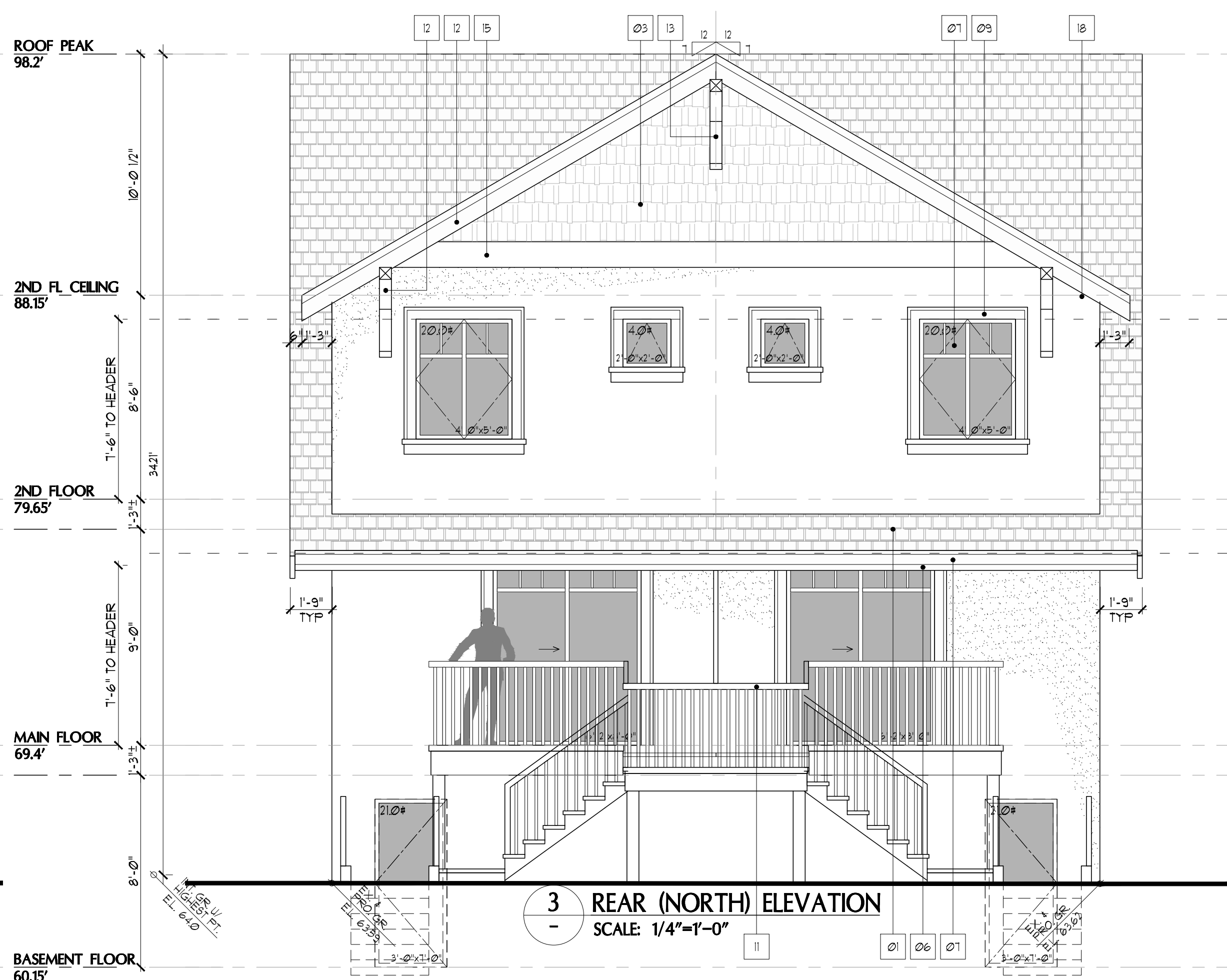
PROPOSED UNPROTECTED OPENINGS:	75.2 SF
LIMITING DISTANCE:	4.00 FT.
EXPOSING BUILDING FACE:	850.0 SF
ALLOWABLE UNPROTECTED OPENINGS:	14% 119.0 SF

**EXTERIOR FINISHES SCHEDULE**

01 ASPHALT SHINGLE ROOFING COLOR: TEC	04 CULTURED STONE CLADDING	07 VINYL WINDOW W/ LOW 'E' DOUBLE GLAZING COLOR: TEC	10 BUILT-UP STAINED WOOD COLUMN W/ CULTURED STONE	13 DECORATIVE KNEE BRACKETS	16 3" CONCRETE LEDGE
02 STUCCO FINE FINISH COLOR: TEC	05 2"x10" WOOD FASCIA TRIM BOARD COLOR: TEC	08 6" WINDOW TRIM AND GILL COLOR: TEC	11 METAL RAILING W/ PICKETS COLOR: TEC	14 DECORATIVE CORBELS	17 PAINTED BOX WINDOW
03 SHINGLE SIDING COLOR: TEC	06 ALUMINUM GUTTER COLOR: TEC	09 3'-0"x8'-0" FRONT ENTRY WOOD DOOR W/ SIDELITE STAIN: TEC	12 1/4" WOOD TRIM OVER 2X11 WOOD FASCIA BOARD COLOR: TEC	15 12" DECORATIVE TRIM COLOR: TEC	18 VENTED WOOD SOFFIT



4 SIDE (EAST) ELEVATION  
 SCALE: 1/4"=1'-0"



3 REAR (NORTH) ELEVATION  
 SCALE: 1/4"=1'-0"



**VICTORERIC**  
 15 EAST 3RD AVENUE  
 VANCOUVER, BC, V5T-1C5  
 T: 604.677.0021 F: 604.677.0178  
 www.victorerich.com

Project:

**2733 W 7TH AVE  
 VANCOUVER, B.C.**

Drawing Title:  
**ELEVATIONS &  
 SPATIAL CALCULATION**

Date:	Project No.
JAN 2017	
Scale:	Drawing No.
1/4" = 1'-0"	
Drawn By:	
MM	
Approved By:	
EL	

**A5**  
 of  
**8**