

GREEN BUILDING STRATEGIES FOR THE BUILDING SHALL COMFORM TO BY-LAW NO. 9691

**1. WINDOW PERFORMANCE - 12.2.1.1**

WINDOWS SHALL HAVE AN ENERGY STARTM RATING MEET THE REQUIREMENT THAT A MAXIMUM THERMAL CONDUCTANCE (U VALUE) OF 1.4 W/(K.m<sup>2</sup>).

**2. LIGHT FIXTURES - 12.2.2.1**

AT LEAST 40% OF HARD WIRED, ELECTRICALLY POWERED LIGHT FIXTURES SHALL BE HARD WIRED SO AS NOT TO ACCEPT INCANDESCENT OR HALOGEN LIGHT BULBS.

**3. HOT WATER TANK - 12.2.2.3**

ELECTRICALLY POWERED HOT WATER TANKS SHALL HAVE INSULATION THAT PROVIDES A MINIMUM RSI VALUE OF 1.76 (R10).

**4. HOT WATER PIPING - 12.2.2.4**

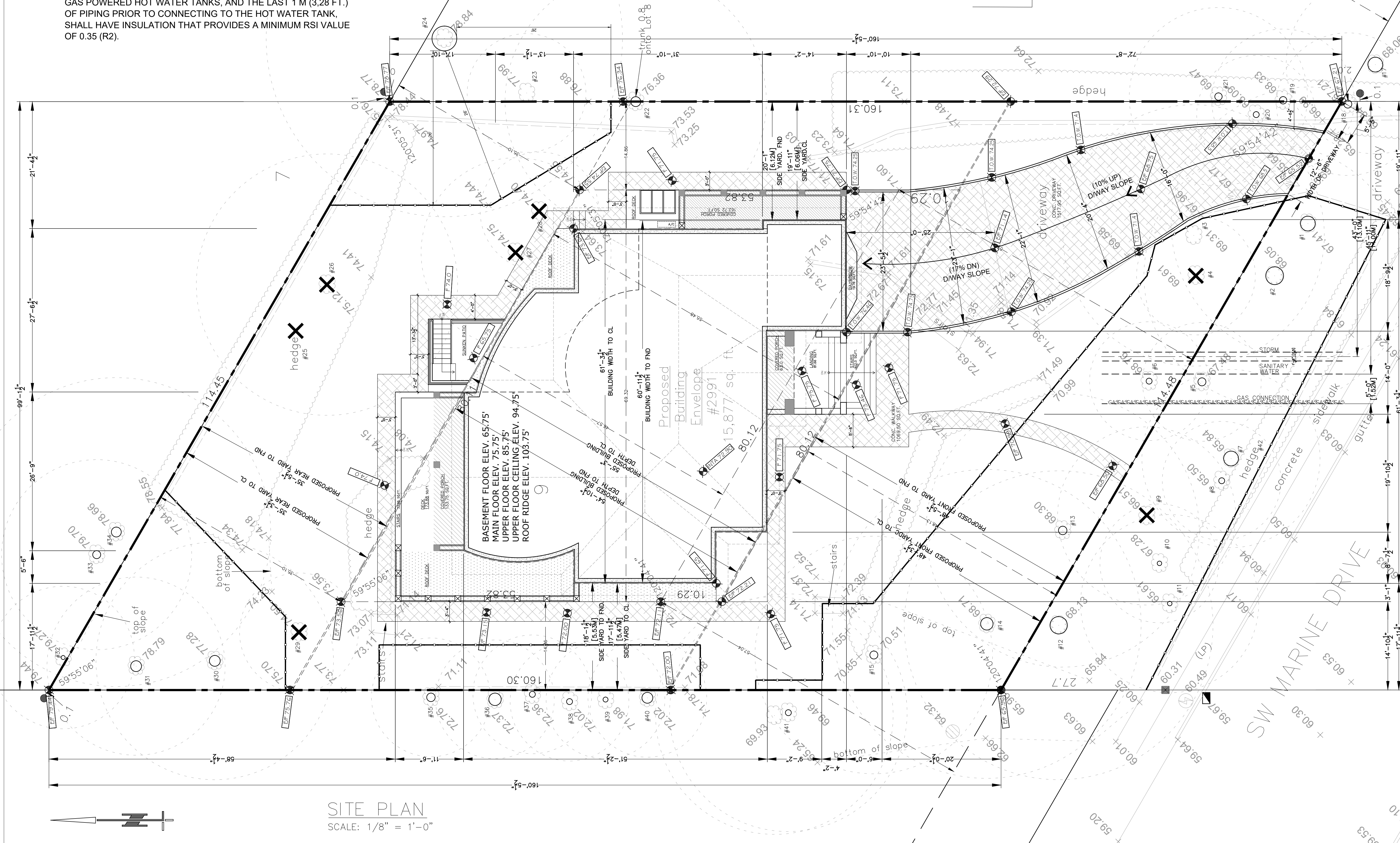
1) THE FIRST 3 M (9.84FT.) OF NON-RECIRCULATING HOT WATER PIPING LEADING FROM BOTH ELECTRICALLY POWERED AND GAS POWERED HOT WATER TANKS, AND THE LAST 1 M (3.28 FT.) OF PIPING PRIOR TO CONNECTING TO THE HOT WATER TANK, SHALL HAVE INSULATION THAT PROVIDES A MINIMUM RSI VALUE OF 0.35 (R2).

2) THE ENTIRE HOT WATER PIPING SYSTEM, IF IT IS OF CONSTANT RECIRCULATION DESIGN, SHALL HAVE INSULATION THAT PROVIDES A MINIMUM RSI VALUE OF 0.35.

**5. TOILETS - 12.2.2.5**

1) TOILETS SHALL BE OF DUAL FLUSH DESIGN, WITH A MAXIMUM SINGLE FLUSH CONSUMPTION OF 6 LITRES.

- WATER CONNECTION  
40mm DIAMETER
- STORM CONNECTION  
150mm DIAMETER
- SANITARY CONNECTION  
100mm DIAMETER
- CONNECTION AT INVERT  
MIN. 56.46 ft (17.21m)  
MAX. 51.08 ft (15.57m)



**SITE PLAN**  
SCALE: 1/8" = 1'-0"

**DLD**  
**DOUBLE LINK DESIGN**  
108-408 EAST KENT AVENUE SOUTH,  
VANCOUVER, B.C.  
604-518-4266  
YELING1216@HOTMAIL.COM

No.	Description	Date
1	BP	OCT 16, 2017

2991 SW MARINE DRIVE  
VANCOUVER, B.C.

SITE PLAN	
Project number	-
Date	Issue Date
Drawn by	candice
Checked by	CY
A1 OF 6	
Scale	AS SHOWN